

# SYSTEM SPECIFICATIONS

SYSTEM MODEL NO: EZS-24765  
 SYSTEM RATING: 75 AMPS FOR 8 HOURS TO 1.75 VPC.  
 RECOMMENDED SYSTEM FLOAT VOLTAGE: 27 MIN. 27.6 MAX.  
 SYSTEM CUTOFF VOLTAGE: 21  
 FULL LOAD CURRENT PER SERIES CIRCUIT: 25 ADC  
 OPEN CIRCUIT VOLTAGE: 24.8 - 25.8 VDC

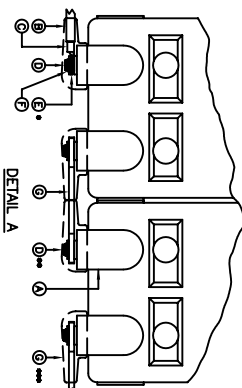
NOTE: CABLE/BUSBAR SIZED TO ACCOMMODATE 250 AMP SPIKE

① ALL RECOMMENDED CUSTOMER'S CABLE GAUGES ARE BASED ON TABLE 310-16 OF N.E.C. USING 75°C CABLE IN 30°C AMBIENT.

② USE INSULATED TOOLS FOR CABINET INSTALLATION.  
 DO NOT ALLOW TOOLS OR CABLES TO REST ON BATTERIES.

### IMPORTANT NOTE

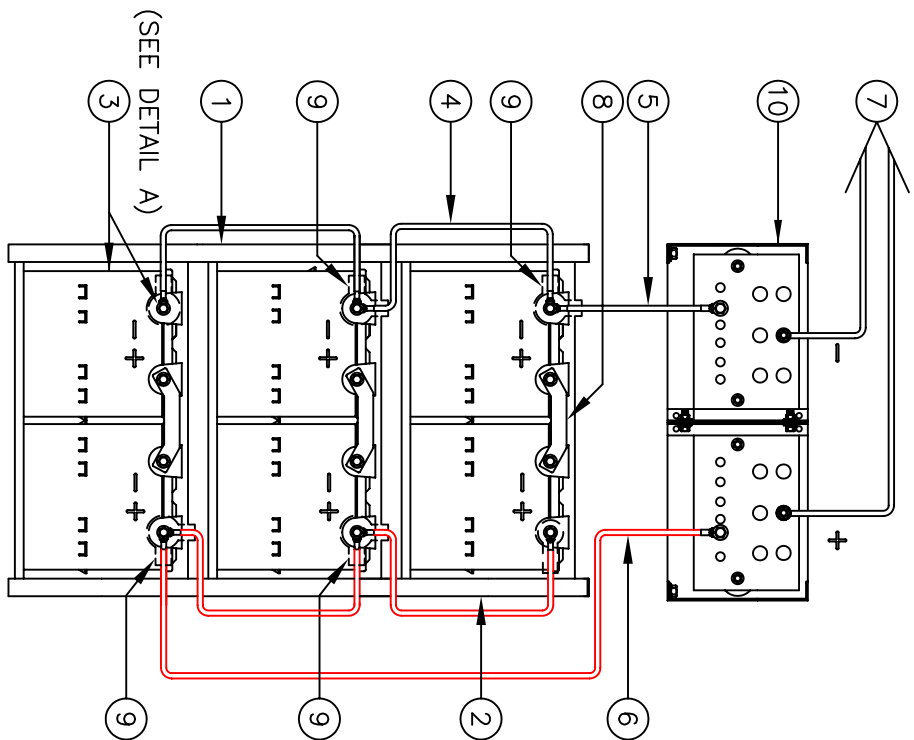
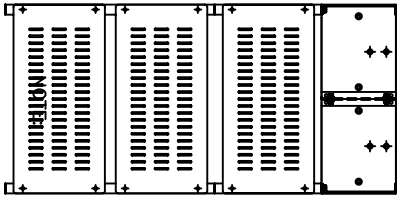
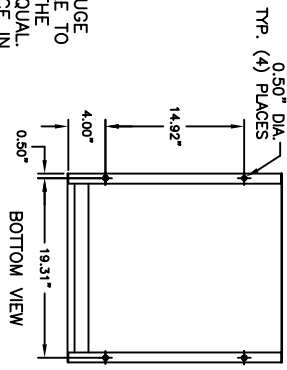
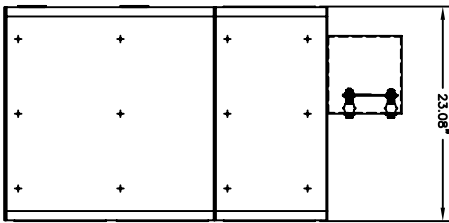
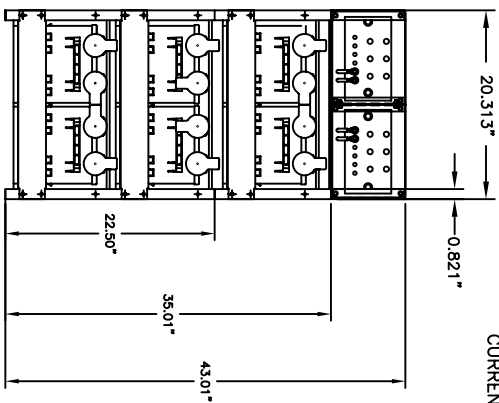
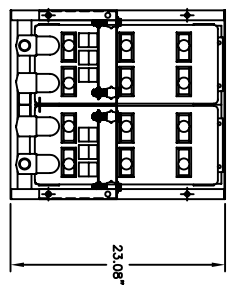
THE CUSTOMER AND/OR CONTRACTOR SHALL BE RESPONSIBLE FOR INSTALLING THIS EQUIPMENT IN ACCORDANCE WITH ALL APPLICABLE CODES AND REGULATIONS  
 PLEASE REFER TO NEC 2008 SECTION 480-9 FOR THE REQUIREMENTS ON WORKING SPACES.



**IMPORTANT NOTE**  
 ALL CONNECTIONS TO BE RETORQUED ANNUALLY.  
 ALL CONNECTIONS MUST BE CHECKED FOR PROPER TORQUE PRIOR TO START UP OR ENERGIZING OF SYSTEM.

\* ALTERNATE METHOD MAY BE USED TO CONNECT TWO SYSTEMS ACCORDING TO CUSTOMERS SPECIFICATIONS.

**PARALLEL CONNECTOR:**  
 WIRE SIZE WILL BE SPECIFIED AS PER GAUGE (MINIMUM) TO BE USED. LENGTHS OF CABLE TO JUNCTION BOX SHOULD BE MADE SO THAT THE TOTAL LENGTH OF CABLES PER STRING IS EQUAL. THIS WILL MINIMIZE VARIATIONS OF RESISTANCE IN EACH STRING. HENCE EQUALLY DISTRIBUTE LOAD CURRENTS.



WIRING DIAGRAM

NOTE: CABLES SIZED TO RESTRICT A VOLTAGE DROP OVER 2%

NO.	DESCRIPTION	QTY.	PART NO.
1	RACK	1	EZ1
2	RACK	2	EZ2
3	BATTERY/BOOTS/HARDWARE	6	PSG-12255
4	CABLE	4	2/0-12B
5	CABLE	1	2/0-35BE
6	CABLE	1	2/0-12BE
7	CABLE	2	SUPPLIED BY CUSTOMER
8	BUSBAR (THICK)	3	CC-0058
9	TERMINAL BOOTS (956D9V14)	4	AC-0011
10	EZ BUSBAR ASSEMBLY	1	EZ-9017
11	EZ ASSEMBLY HARDWARE KIT	2	HK-0001
12	EZ STACKING HARDWARE KIT	2	HK-0003

NO.	DATE	BY	SCALE
1	11/18/08		
2			
3			
4			
5			

POWER BATTERY COMPANY, INC.  
 BATTERY SYSTEM LAYOUT FOR  
 (2) EZ RACKS (24 V.) WITH  
 (9) 12 V. BATTERIES

POWER BATTERY COMPANY, INC.  
 FILE NO: EZ1-0001  
 DRAWING NO: EZS-24765