

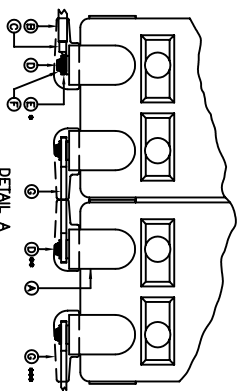
SYSTEM SPECIFICATIONS

SYSTEM MODEL NO.: EZS-24510
 SYSTEM RATING: 50 AMPS FOR 8 HOURS TO 1.75 VPC.
 RECOMMENDED SYSTEM FLOAT VOLTAGE: 27 MIN. 27.6 MAX.
 SYSTEM CUTOFF VOLTAGE: 21
 FULL LOAD CURRENT: 50 ADC
 FULL LOAD CURRENT PER SERIES CIRCUIT: 25 ADC
 OPEN CIRCUIT VOLTAGE: 24.8 - 25.8 VDC

NOTE: CABLE/BUSBAR SIZED TO ACCOMMODATE 250 AMP SPIKE

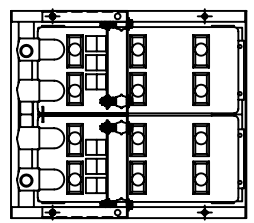
- ① ALL RECOMMENDED CUSTOMER'S CABLE GAUGES ARE BASED ON TABLE 310-16 OF N.E.C. USING 75°C CABLE IN 30°C AMBIENT.
- ② INITIAL CONNECTION TORQUE VALUES 120 IN-LB BATTERY RETORQUE ANNUALLY TO* 115 IN-LB BATTERY
- ③ USE INSULATED TOOLS FOR CABINET INSTALLATION. DO NOT ALLOW TOOLS OR CABLES TO REST ON BATTERIES.

WIRE SIZE WILL BE SPECIFIED AS PER GAUGE (MINIMUM) TO BE USED. LENGTHS OF CABLE TO JUNCTION BOX SHOULD BE MADE SO THAT THE TOTAL LENGTH OF CABLES PER STRING IS EQUAL. THIS WILL MINIMIZE VARIATIONS OF RESISTANCE IN EACH STRING. HENCE EQUALLY DISTRIBUTE LOAD



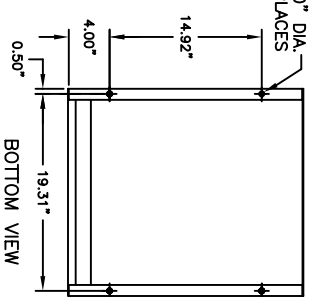
ITEM	BATTERY TERMINAL DESCRIPTION
H	BUS BAR COVER
I	BUS BAR
J	SPRING WASHER
K	SPRING WASHER
L	BOOT
M	CABLE LUG

* USE (2) FLAT WASHERS WHEN CABLES ARE BEING USED
 ** USE (1) FLAT WASHER WHEN A BUS BAR IS BEING USED
 *** BUS BAR BOOTS SHALL BE USE IN EACH CONNECTION
 NOTE: ALL CONNECTIONS MUST BE RETORQUED ANNUALLY TO 115 IN-LBS.



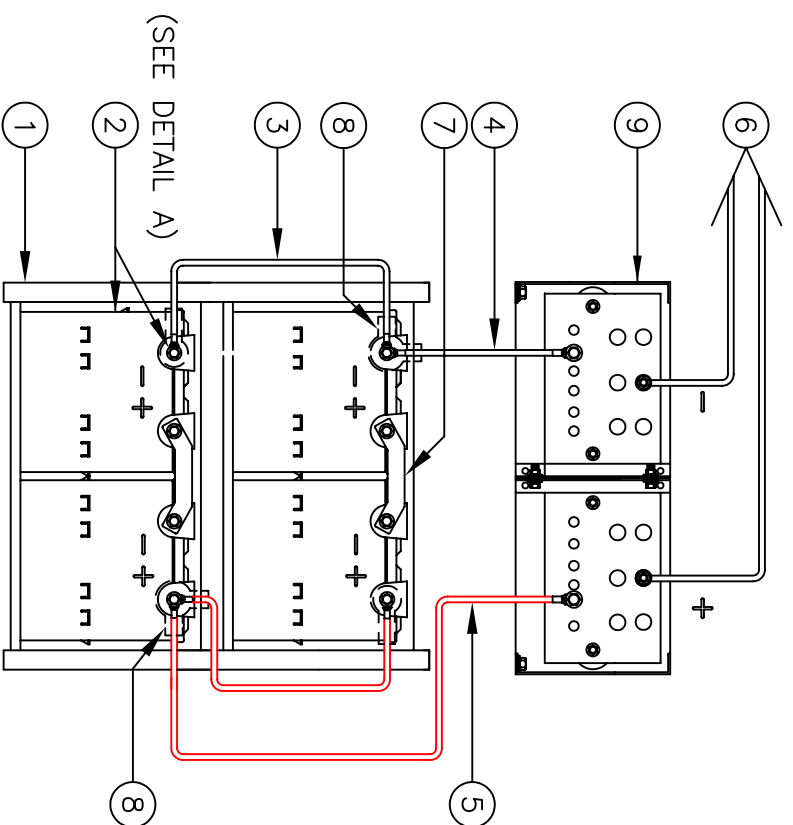
TOP VIEW

IMPORTANT NOTE
 ALL CONNECTIONS TO BE RETORQUED ANNUALLY.
 ALL CONNECTIONS MUST BE CHECKED FOR PROPER TORQUE PRIOR TO START UP OR ENERGIZING OF SYSTEM.



BOTTOM VIEW

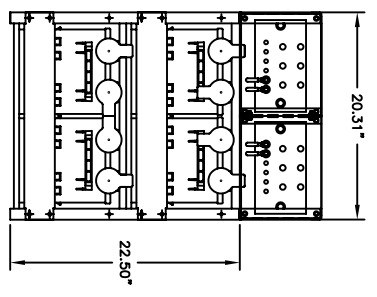
IMPORTANT NOTE
 THE CUSTOMER AND/OR CONTRACTOR SHALL BE RESPONSIBLE FOR INSTALLING THIS EQUIPMENT IN ACCORDANCE WITH ALL APPLICABLE CODES AND REGULATIONS.
 PLEASE REFER TO NEC 2008 SECTION 480-9 FOR THE REQUIREMENTS ON WORKING SPACES.



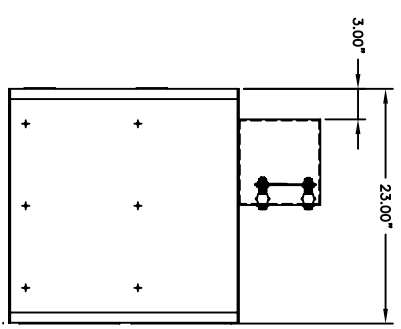
WIRING DIAGRAM

NOTE:
 CABLES SIZED TO RESTRICT A VOLTAGE DROP OVER 2%

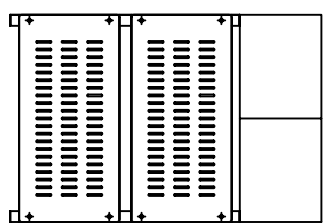
NO.	DESCRIPTION	QTY.	PART NO.
1	RACK	1	EZ1
2	BATTERY/BOOTS/HARDWARE	4	PSG-12255
3	CABLE 1/0 GA. 12" LG.	2	1/0-12B
4	CABLE 1/0 GA. 10" LG.	1	1/0-10BE
5	CABLE 1/0 GA. 25" LG.	1	1/0-25BE
6	CABLE 250 MCM MINIMUM	2	SUPPLIED BY CUSTOMER
7	BUSBAR (THICK)	2	CC-0058
8	TERMINAL BOOTS (956D9V14)	2	AC-0011
9	EZ BUSBAR ASSEMBLY	1	EZ-9017
10	EZ ASSEMBLY HARDWARE KIT	2	HK-0001
11	EZ STACKING HARDWARE KIT	1	HK-0003



FRONT VIEW



SIDE VIEW



BACK VIEW

NO.	DATE	BR.	SCALE	DATE	DESCRIPTION	QTY.	PART NO.
1	11/4/08			11/4/08	POWER BATTERY COMPANY INC.		
2					BATTERY SYSTEM LAYOUT FOR		
3					(1) EZ RACK (24 V.) WITH		
4					(4) 12 V. BATTERIES		
5							
6							



POWER BATTERY COMPANY INC.
 BATTERY SYSTEM LAYOUT FOR
 (1) EZ RACK (24 V.) WITH
 (4) 12 V. BATTERIES
 FILE NO.: EZ1-0001
 DRAWING NO.: EZS-24510