

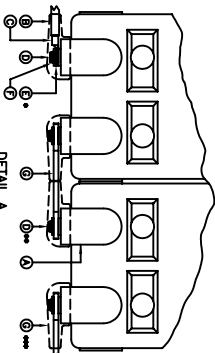
SYSTEM SPECIFICATIONS

SYSTEM MODEL NO.: EZS-243060
 SYSTEM RATING: 190 AMPS FOR 1.3,33 HOURS TO 1.75 VPC.
 RECOMMENDED SYSTEM FLOAT VOLTAGE: 27 MIN. 27.6 MAX.
 SYSTEM CUTOFF VOLTAGE: 21
 FULL LOAD CURRENT: 190 ADC
 FULL LOAD CURRENT PER SERIES CIRCUIT: 15.83 ADC
 OPEN CIRCUIT VOLTAGE: 24.8 - 25.8 VDC

- ① ALL RECOMMENDED CUSTOMER'S CABLE GAUGES ARE BASED ON TABLE 310-16 OF N.E.C. USING 75°C CABLE IN 30°C AMBIENT.
- ② USE INSULATED TOOLS FOR CABINET INSTALLATION. DO NOT ALLOW TOOLS OR CABLES TO REST ON BATTERIES.

IMPORTANT NOTE

THE CUSTOMER AND/OR CONTRACTOR SHALL BE RESPONSIBLE FOR INSTALLING THIS EQUIPMENT IN ACCORDANCE WITH ALL APPLICABLE CODES AND REGULATIONS
 PLEASE REFER TO NEC 2008 SECTION 480-9 FOR THE REQUIREMENTS ON WORKING SPACES.



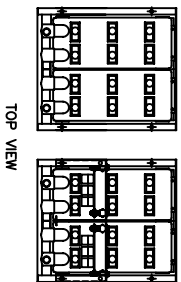
DETAIL A
 TERMINAL CONNECTION

ITEM	DESCRIPTION
1	BUS BAR COVER
2	BUS BAR
3	SPRING LOCK WASHER
4	WASHER
5	CABLE LUG
6	CABLE
7	BATTERY CONNECTION
8	PLAT WASHER

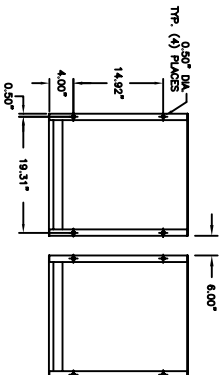
* USE (2) PLAT WASHER WHEN CABLES ARE BEING USED
 ** USE (1) PLAT WASHER WHEN A BUS BAR IS BEING USED
 *** BUS BAR BOOTS SHALL BE USED IN EACH CONNECTION
 NOTE: ALL CONNECTIONS MUST BE RETORQUED ANNUALLY TO 115 IN-FTS.

IMPORTANT NOTE

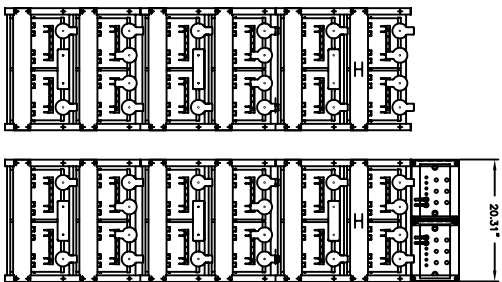
ALL CONNECTIONS TO BE RETORQUED ANNUALLY
 ALL CONNECTIONS MUST BE CHECKED FOR PROPER TORQUE PRIOR TO START UP OR ENERGIZING OF SYSTEM.



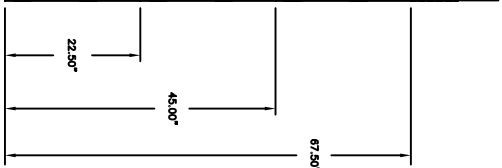
TOP VIEW



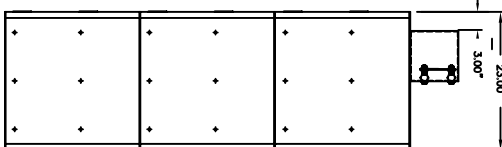
BOTTOM VIEW



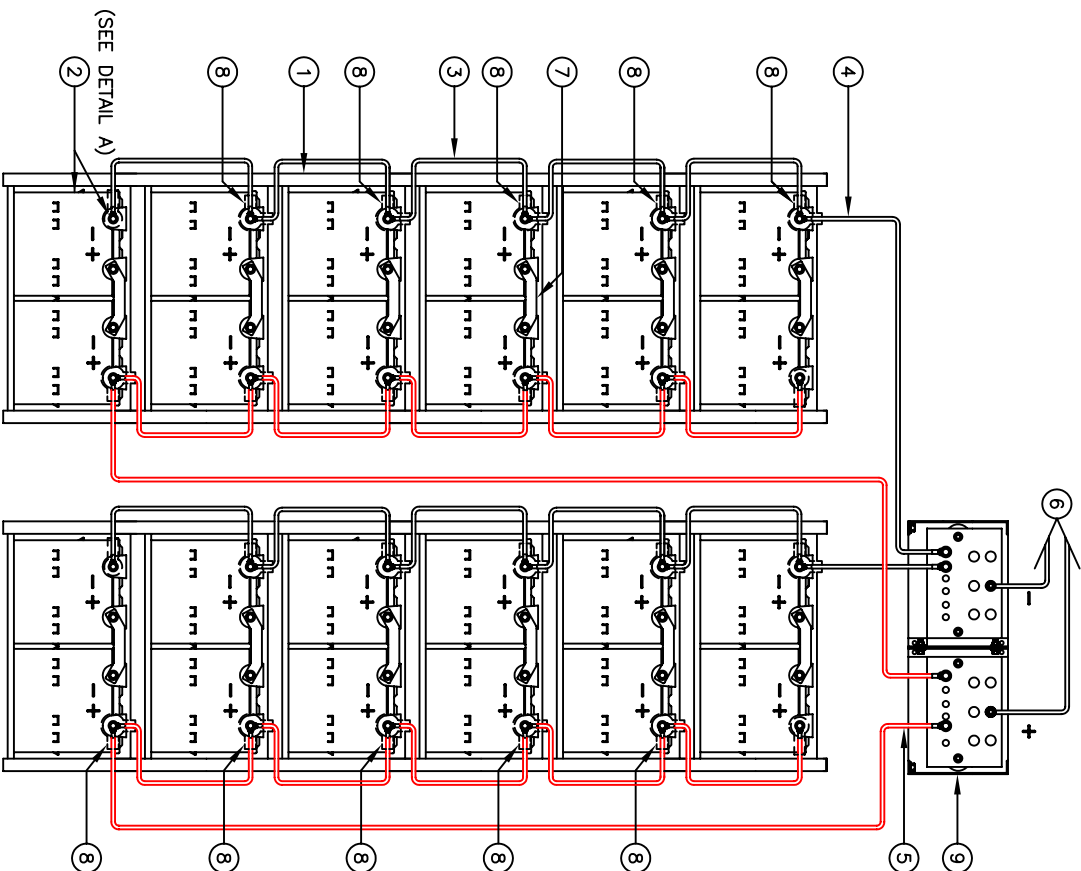
FRONT VIEW



SIDE VIEW



BACK VIEW



WIRING DIAGRAM

NOTE:
 * ALTERNATE METHOD MAY BE USED TO CONNECT TWO SYSTEMS ACCORDING TO CUSTOMERS SPECIFICATIONS.

PARALLEL CONNECTOR:
 WIRE SIZE WILL BE SPECIFIED AS PER GAUGE (MINIMUM) TO BE USED. LENGTHS OF CABLE TO JUNCTION BOX SHOULD BE MADE SO THAT THE TOTAL LENGTH OF CABLES PER STRING IS EQUAL. THIS WILL MINIMIZE VARIATIONS OF RESISTANCE IN EACH STRING. HENCE EQUALLY DISTRIBUTE LOAD CURRENTS.

NOTE:
 CABLES SIZED TO RESTRICT A VOLTAGE DROP OVER 2%

NO.	DESCRIPTION	QTY	PART NO.
1	RACK	6	EZ1
2	BATTERY/BOOTS/HARDWARE	24	PSG-12295
3	CABLE DOUBLE RUN 4/0 GA. 12' LG. POW2	4/0-12B	
4	CABLE DOUBLE RUN 4/0 GA. 40' LG. 11/2	4/0-40BE	
5	CABLE DOUBLE RUN 4/0 GA. 80' LG. 11/2	4/0-80BE	
6	CABLE DOUBLE RUN 4/0 GA. MINIMUM 2x2 SHIPPED BY CUSTOMER	4/0-2x2	
7	BUSBAR (THICK)	12	CC-0058
8	TERMINAL BOOTS (95609V14)	20	AC-0011
9	EZ BUSBAR ASSEMBLY	1	EZ-9017
10	EZ ASSEMBLY HARDWARE KIT	12	HK-0001
11	EZ STACKING HARDWARE KIT	5	HK-0003

NO.	REVISIONS	DATE	BY	REASON
1		12/18/08	Kimberly	
2			Kimberly	
3				
4				
5				

POWER
 POWER BATTERY COMPANY, INC.
 BATTERY SYSTEM LAYOUT FOR
 (6) EZ RACKS (24 V.) WITH
 (24) 12 V. BATTERIES
 Part No. E71-0001
 Power EZS-243060