

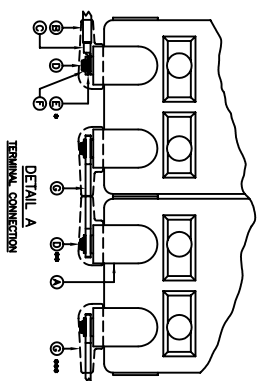
# SYSTEM SPECIFICATIONS

SYSTEM MODEL NO.: EZS-242550  
 SYSTEM RATING: 210 AMPS FOR 9.8 HOURS TO 1.75 VPC.  
 RECOMMENDED SYSTEM FLOAT VOLTAGE: 27 MIN. 27.6 MAX.  
 SYSTEM CUTOFF VOLTAGE: 21  
 FULL LOAD CURRENT: 210 ADC  
 FULL LOAD CURRENT PER SERIES CIRCUIT: 21 ADC  
 OPEN CIRCUIT VOLTAGE: 24.8 - 25.8 VDC

- ① ALL RECOMMENDED CUSTOMER'S CABLE GAUGES ARE BASED ON TABLE 310-16 OF N.E.C. USING 75°C CABLE IN 30°C AMBIENT.
- ② USE INSULATED TOOLS FOR CABINET INSTALLATION. DO NOT ALLOW TOOLS OR CABLES TO REST ON BATTERIES.

### IMPORTANT NOTE

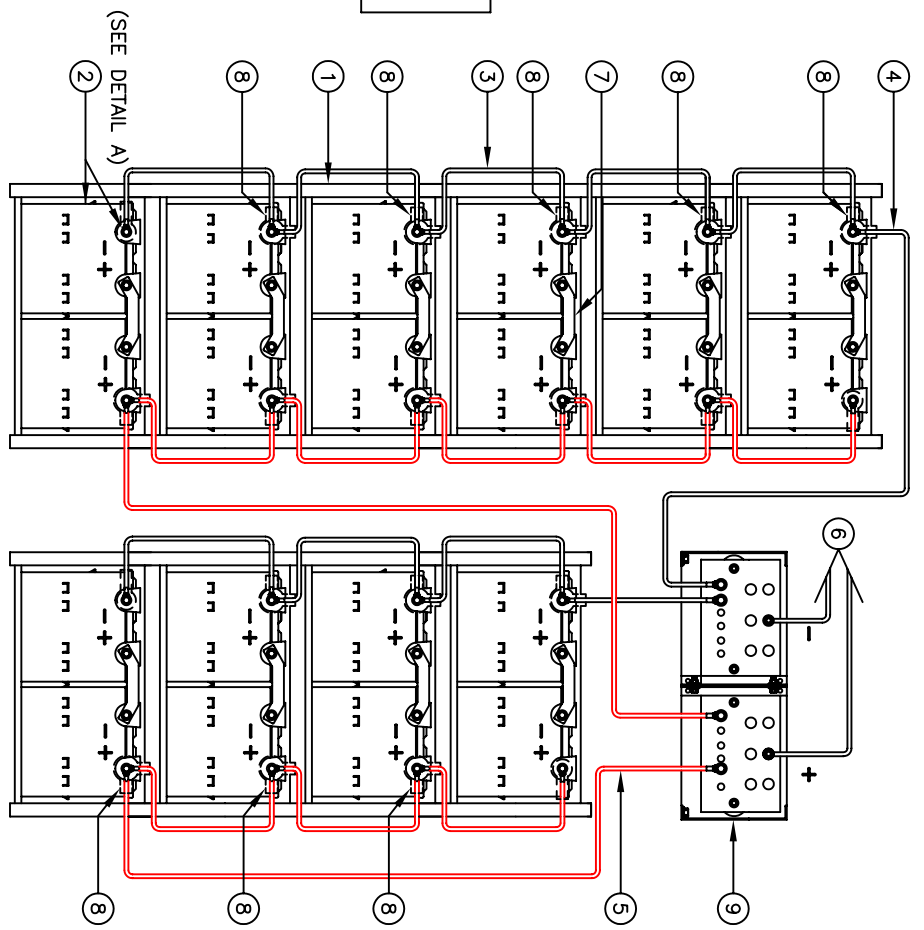
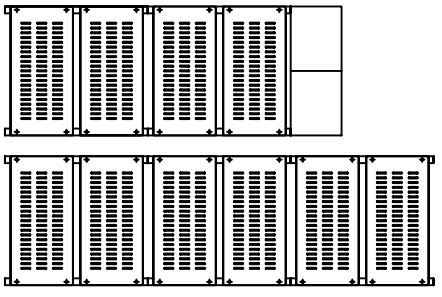
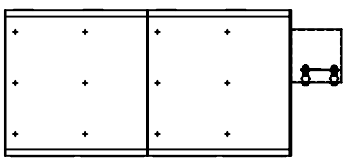
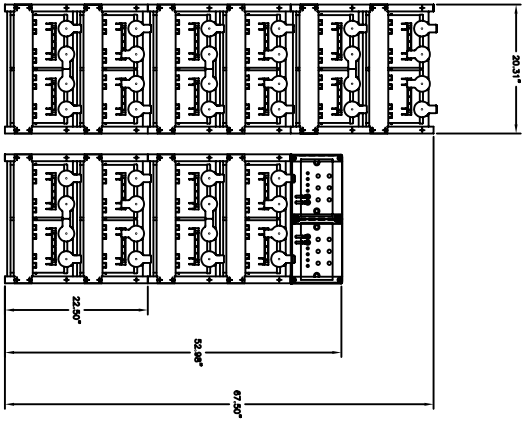
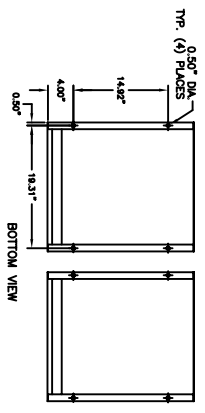
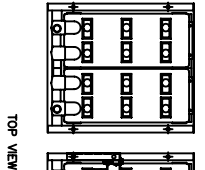
THE CUSTOMER AND/OR CONTRACTOR SHALL BE RESPONSIBLE FOR INSTALLING THIS EQUIPMENT IN ACCORDANCE WITH ALL APPLICABLE CODES AND REGULATIONS  
 PLEASE REFER TO NEC 2008 SECTION 480-9 FOR THE REQUIREMENTS ON WORKING SPACES.



ALL CONNECTIONS TO BE RETORQUED ANNUALLY.  
 ALL CONNECTIONS MUST BE CHECKED FOR PROPER TORQUE PRIOR TO START UP OR ENERGIZING OF SYSTEM.

### IMPORTANT NOTE

ALL CONNECTIONS TO BE RETORQUED ANNUALLY.  
 ALL CONNECTIONS MUST BE CHECKED FOR PROPER TORQUE PRIOR TO START UP OR ENERGIZING OF SYSTEM.



NOTE: CABLES SIZED TO RESTRICT A VOLTAGE DROP OVER 2%

NOTE:  
 \* ALTERNATE METHOD MAY BE USED TO CONNECT TWO SYSTEMS ACCORDING TO CUSTOMERS SPECIFICATIONS.  
 PARALLEL CONNECTOR:  
 WIRE SIZE WILL BE SPECIFIED AS PER GAUGE (MINIMUM) TO BE USED. LENGTHS OF CABLE TO JUNCTION BOX SHOULD BE MADE SO THAT THE TOTAL LENGTH OF CABLES PER STRING IS EQUAL. THIS WILL MINIMIZE VARIATIONS OF RESISTANCE IN EACH STRING. HENCE EQUALLY DISTRIBUTE LOAD CURRENTS.

NO.	DESCRIPTION	QTY.	PART NO.
1	PACK	5	EZ1
2	BATTERY/BOOTS/HARDWARE	20	PSG-12255
3	CABLE DOUBLE RUN 4/0 GA. 12" LG.	16x2	4/0-12B
4	CABLE DOUBLE RUN 4/0 GA. 60" LG.	1x2	4/0-60BE
5	CABLE DOUBLE RUN 4/0 GA. 50" LG.	1x2	4/0-50BE
6	CABLE DOUBLE RUN 4/0 GA. MINIMUM 2x2	SHIPPED BY CUSTOMER	
7	BUSBAR (THICK)	10	CC-0058
8	TERMINAL BOOTS (95609V14)	16	AC-0011
9	EZ BUSBAR ASSEMBLY	1	EZ-9017
10	EZ ASSEMBLY HARDWARE KIT	10	HK-0001
11	EZ STACKING HARDWARE KIT	4	HK-0003

NO.	DATE	BY	SCALE	ISSUED BY	POWER BATTERY COMPANY, INC.
1	12/18/08			Kimberly	BATTERY SYSTEM LAYOUT FOR (9) EZ RACKS (24 V.) WITH (20) 12 V. BATTERIES
2					
3					
4					
5					

POWER BATTERY COMPANY, INC.  
 BATTERY SYSTEM LAYOUT FOR  
 (9) EZ RACKS (24 V.) WITH  
 (20) 12 V. BATTERIES

FILE NO.: EZ1-0001  
 DRAWING NO.: EZS-242550