

SYSTEM SPECIFICATIONS

SYSTEM MODEL NO.: EZS-242040
 SYSTEM RATING: 200 AMPS FOR 8 HOURS TO 1.75 VPC.
 RECOMMENDED SYSTEM FLOAT VOLTAGE: 27 MIN. 27.6 MAX.
 SYSTEM CUTOFF VOLTAGE: 21
 FULL LOAD CURRENT: 200 ADC
 FULL LOAD CURRENT PER SERIES CIRCUIT: 25 ADC
 OPEN CIRCUIT VOLTAGE: 24.8 - 25.8 VDC

NOTE: CABLE/BUSBAR SIZED TO ACCOMMODATE 250 AMP SPIKE

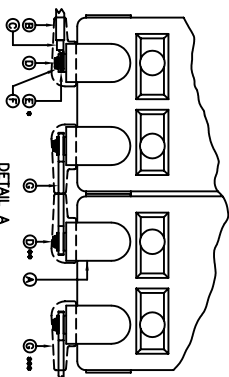
- ① ALL RECOMMENDED CUSTOMER'S CABLE GAUGES ARE BASED ON TABLE 310-16 OF N.E.C. USING 75°C CABLE IN 30°C AMBIENT.
- ② USE INSULATED TOOLS FOR CABINET INSTALLATION, DO NOT ALLOW TOOLS OR CABLES TO REST ON BATTERIES.

IMPORTANT NOTE

THE CUSTOMER AND/OR CONTRACTOR SHALL BE RESPONSIBLE FOR INSTALLING THIS EQUIPMENT IN ACCORDANCE WITH ALL APPLICABLE CODES AND REGULATIONS. PLEASE REFER TO NEC 2008 SECTION 480-9 FOR THE REQUIREMENTS ON WORKING SPACES.

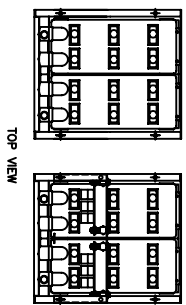
IMPORTANT NOTE

ALL CONNECTIONS TO BE RETORQUED ANNUALLY. ALL CONNECTIONS MUST BE CHECKED FOR PROPER TORQUE PRIOR TO START UP OR ENERGIZING OF SYSTEM.

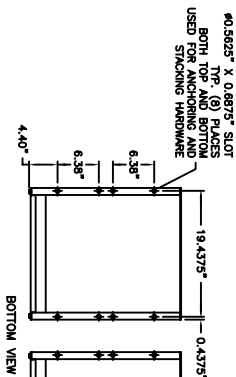


LETTER	DESCRIPTION
H	BUS BAR COVER
G	BUS BAR
F	SPRING LOCK WASHER
E	BOLT
D	CABLE LUG
C	BATTERY TERMINAL
B	BATTERY DESCRIPTION
A	TERMINAL CONNECTION

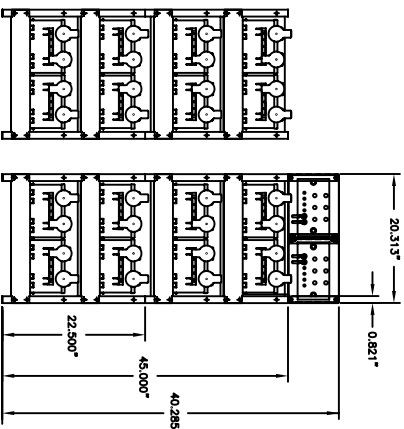
** USE (2) FLAT WASHER WHEN CABLES ARE BEING USED
 ** USE (1) FLAT WASHER WHEN A BUS BAR IS BEING USED
 ** BUS BAR BOLTS SHALL BE USE IN EACH CONNECTION
 NOTE: ALL CONNECTIONS MUST BE RETORQUED ANNUALLY TO 115 IN-LS.



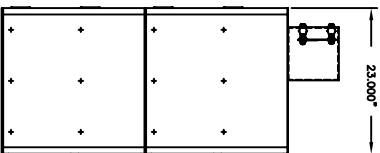
TOP VIEW



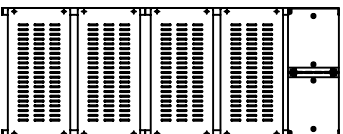
BOTTOM VIEW



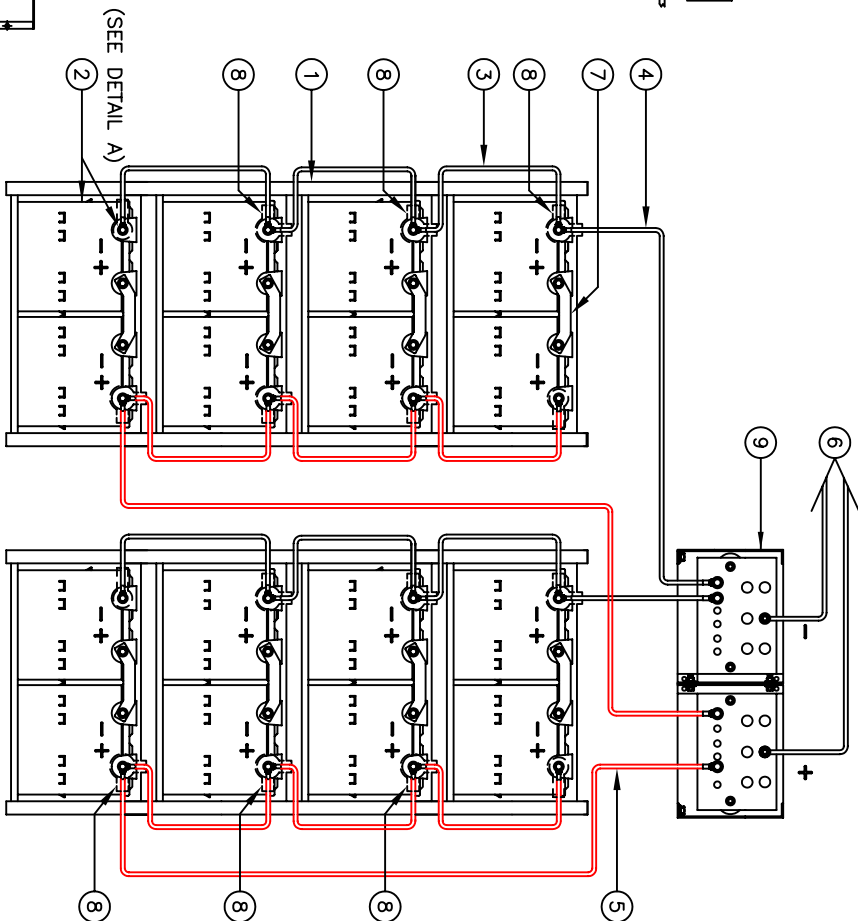
FRONT VIEW



SIDE VIEW



BACK VIEW



WIRING DIAGRAM

NOTE: ALTERNATE METHOD MAY BE USED TO CONNECT TWO SYSTEMS ACCORDING TO CUSTOMER'S SPECIFICATIONS.

PARALLEL CONNECTOR:
 WIRE SIZE WILL BE SPECIFIED AS PER GAUGE (MINIMUM) TO BE USED. LENGTHS OF CABLE TO JUNCTION BOX SHOULD BE MADE SO THAT THE TOTAL LENGTH OF CABLES PER STRING IS EQUAL. THIS WILL MINIMIZE VARIATIONS OF RESISTANCE IN EACH STRING. HENCE EQUALLY DISTRIBUTE LOAD CURRENTS.

NOTE: CABLES SIZED TO RESTRICT A VOLTAGE DROP OVER 2%

NO.	DESCRIPTION	QTY.	PART NO.
1	EZ STACKING HARDWARE KIT	3	HK-0003
2	EZ ASSEMBLY HARDWARE KIT	8	HK-0001
3	EZ BUSBAR ASSEMBLY	1	EZ-9017
4	TERMINAL BOOTS (93609V14)	12	AC-0011
5	BUSBAR (THICK)	8	CC-0058
6	CABLE DOUBLE RUN 3/0 GA. MINIMUM 2x2 SHIPLED BY CUSTOMER	3/0-50BE	
7	CABLE DOUBLE RUN 3/0 GA. 50" LG. 1x2	3/0-50BE	
8	CABLE DOUBLE RUN 3/0 GA. 35" LG. 1x2	3/0-50BE	
9	CABLE DOUBLE RUN 3/0 GA. 12" LG. 1x2x2	3/0-12B	
10	BATTERY/BOOTS/HARDWARE	16	PSG-12255
11	RACK	4	EZ1

NO.	DATE	REVISIONS	BY	CHKD BY	APP'D BY
1	11/18/08				
2					
3					
4					
5					

POWER
 POWER BATTERY COMPANY INC.
 BATTERY SYSTEM LAYOUT FOR
 (4) EZ RACKS (24 V) WITH
 (16) 12 V BATTERIES
 DRAWING NO.: EZS-242040
 PART NO.: E71-0001