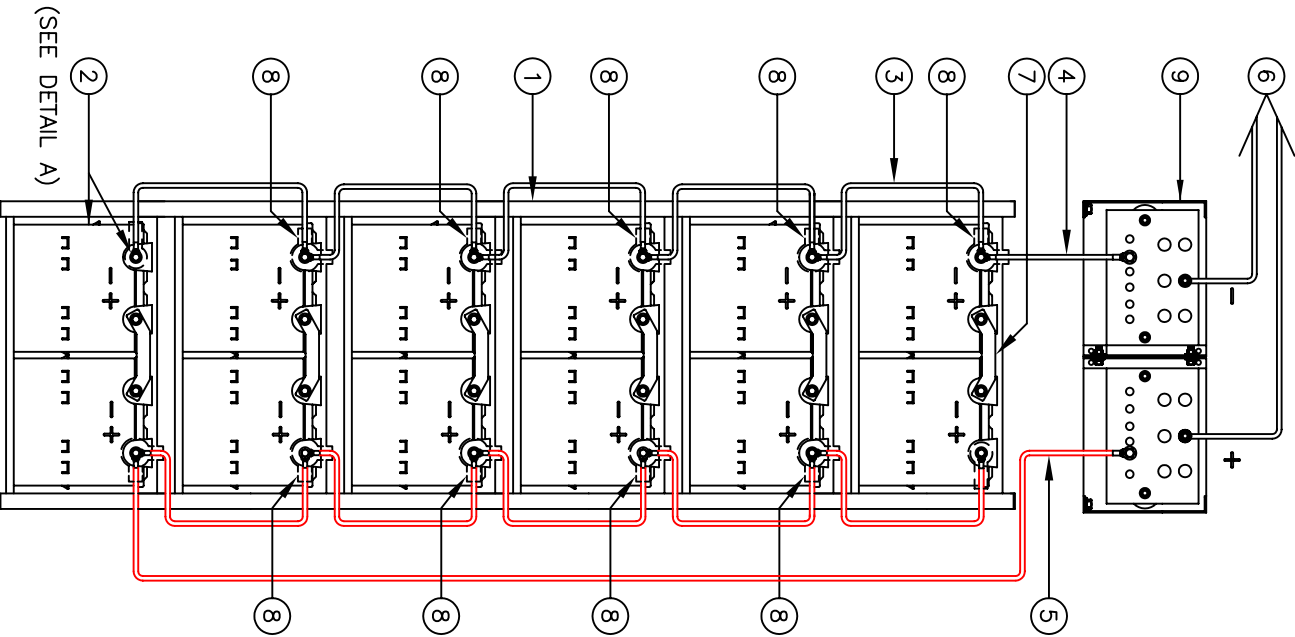
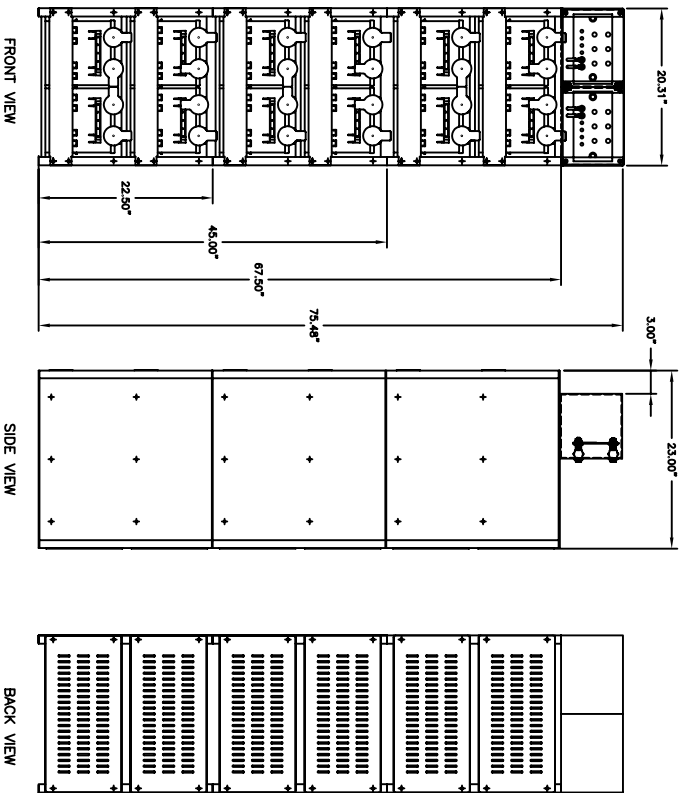
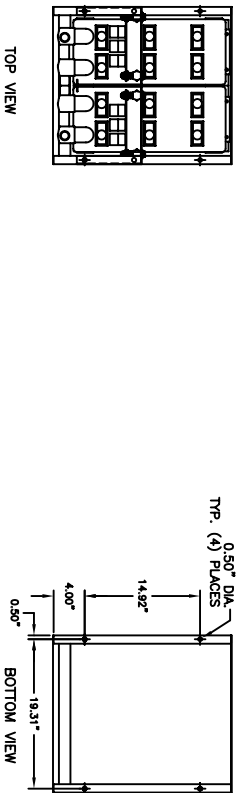


SYSTEM SPECIFICATIONS

SYSTEM MODEL NO.: EZS-241530
 SYSTEM RATING: 150 AMPS FOR 8 HOURS TO 1.75 VPC.
 RECOMMENDED SYSTEM FLOAT VOLTAGE: 27 MIN. 27.6 MAX.
 SYSTEM CUTOFF VOLTAGE: 21
 FULL LOAD CURRENT: 150 ADC
 OPEN CIRCUIT VOLTAGE: 24.8 - 25.8 VDC

NOTE: CABLE/BUSBAR SIZED TO ACCOMMODATE 250 AMP SPIKE

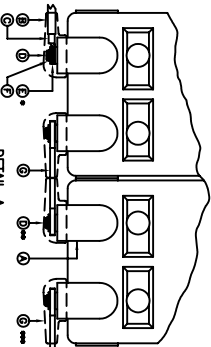
- ① ALL RECOMMENDED CUSTOMER'S CABLE GAUGES ARE BASED ON TABLE 310-16 OF N.E.C. USING 75°C CABLE IN 30°C AMBIENT.
- ② USE INSULATED TOOLS FOR CABINET INSTALLATION. DO NOT ALLOW TOOLS OR CABLES TO REST ON BATTERIES.



PARALLEL CONNECTOR:
 WIRE SIZE WILL BE SPECIFIED AS PER GAUGE (MINIMUM) TO BE USED. LENGTHS OF CABLE TO JUNCTION BOX SHOULD BE MADE SO THAT THE TOTAL LENGTH OF CABLES PER STRING IS EQUAL. THIS WILL MINIMIZE VARIATIONS OF RESISTANCE IN EACH STRING. HENCE EQUALLY DISTRIBUTE LOAD CURRENTS.

NOTE:
 * ALTERNATE METHOD MAY BE USED TO CONNECT TWO SYSTEMS ACCORDING TO CUSTOMERS SPECIFICATIONS.

IMPORTANT NOTE
 THE CUSTOMER AND/OR CONTRACTOR SHALL BE RESPONSIBLE FOR INSTALLING THIS EQUIPMENT IN ACCORDANCE WITH ALL APPLICABLE CODES AND REGULATIONS
 PLEASE REFER TO NEC 2008 SECTION 480-9 FOR THE REQUIREMENTS ON WORKING SPACES.



ITEM	DESCRIPTION	QTY.	PART NO.
H	BUS BAR COVER	3	HK-0003
G	BUS BAR	6	HK-0001
F	SPRING LOCK WASHER	6	EZ-9017
E	FLAT WASHER	12	AC-0011
D	CABLE LUG	12	CC-0058
C	CABLE LUG	12	CC-0058
B	BATTERY TERMINAL	12	PS-12285
A	BATTERY TERMINAL	12	PS-12285

NOTE: (1) FLAT WASHER WHEN CABLES ARE BEING USED
 (2) FLAT WASHER WHEN A BUS BAR IS BEING USED
 *** BUS BAR BOLTS SHALL BE USED IN EACH CONNECTION
 NOTE: ALL CONNECTIONS MUST BE RETIGHTENED ANNUALLY TO 115 IN-LBS.

IMPORTANT NOTE
 ALL CONNECTIONS TO BE RETIGHTENED ANNUALLY.
 ALL CONNECTIONS MUST BE CHECKED FOR PROPER TORQUE PRIOR TO START UP OR ENERGIZING OF SYSTEM.

NOTE:
 CABLES SIZED TO RESTRICT A VOLTAGE DROP OVER 2%

NO.	DESCRIPTION	QTY.	PART NO.
11	EZ STACKING HARDWARE KIT	3	HK-0003
10	EZ ASSEMBLY HARDWARE KIT	6	HK-0001
9	EZ BUSBAR ASSEMBLY	1	EZ-9017
8	TERMINAL BOOTS (956D9V14)	10	AC-0011
7	BUSBAR (THICK)	6	CC-0058
6	CABLE DOUBLE RING 2/0 GA. MINIMUM 2x2 STRIPPED BY CUSTOMER	2/0-70#	2/0-70#E
5	CABLE DOUBLE RING 2/0 GA. 70" LG. 1x2	2/0-128E	2/0-128E
4	CABLE DOUBLE RING 2/0 GA. 12" LG. 1x2	2/0-128	2/0-128
3	CABLE DOUBLE RING 2/0 GA. 12" LG. 10x2	PS-12285	PS-12285
2	BATTERY/BOOTS/HARDWARE	12	PS-12285
1	RACK	3	EZ1

REVISIONS

REV.	DATE	BY	REASON
1	11/13/08	SK	POWER SYSTEM LAYOUT FOR BATTERY SYSTEM (24 V.) WITH (3) EZ RACKS (24 V.) WITH (12) 12 V. BATTERIES
2		Kimberly	
3			
4			

POWER SYSTEMS
 EZS-241530