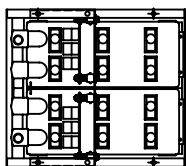


SYSTEM SPECIFICATIONS

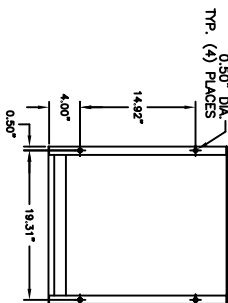
SYSTEM MODEL NO.: EZS-241275
 SYSTEM RATING: 125 AMPS FOR 8 HOURS TO 1.75 VFC.
 RECOMMENDED SYSTEM FLOAT VOLTAGE: 27 MIN. 27.6 MAX.
 SYSTEM CUTOFF VOLTAGE: 21
 FULL LOAD CURRENT: 125 ADC
 FULL LOAD CURRENT PER SERIES CIRCUIT: 25 ADC
 OPEN CIRCUIT VOLTAGE: 24.8 - 25.8 VDC

NOTE: CABLE/BUSBAR SIZED TO ACCOMMODATE 250 AMP SPIKE

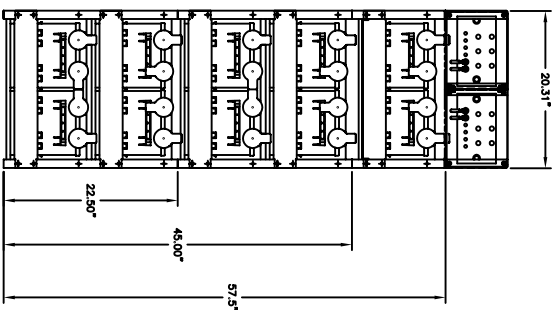
- ① ALL RECOMMENDED CUSTOMER'S CABLE GAUGES ARE BASED ON TABLE 310-16 OF N.E.C. USING 75°C CABLE IN 30°C AMBIENT.
- ② USE INSULATED TOOLS FOR CABINET INSTALLATION. DO NOT ALLOW TOOLS OR CABLES TO REST ON BATTERIES.



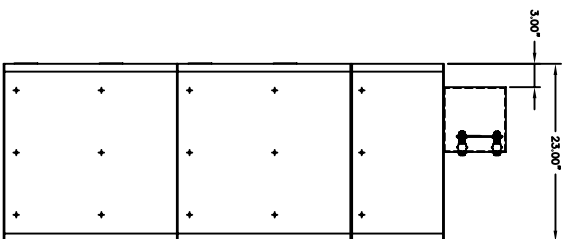
TOP VIEW



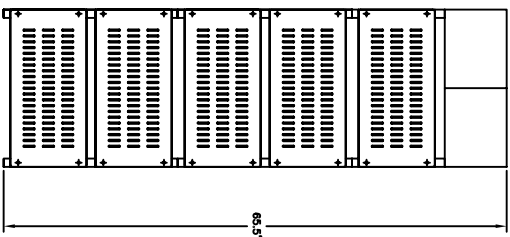
BOTTOM VIEW



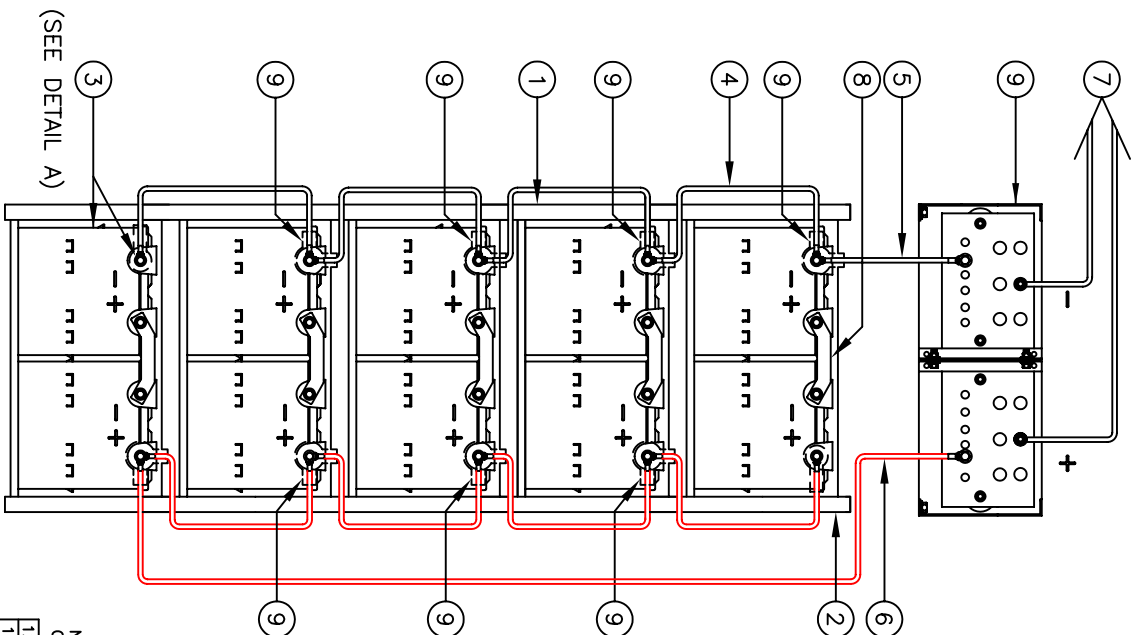
FRONT VIEW



SIDE VIEW

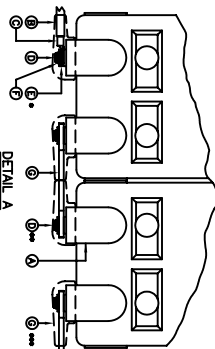


BACK VIEW



NOTE:
 * ALTERNATE METHOD MAY BE USED TO CONNECT TWO SYSTEMS ACCORDING TO CUSTOMER'S SPECIFICATIONS.

PARALLEL CONNECTOR:
 WIRE SIZE WILL BE SPECIFIED AS PER GAUGE (MINIMUM) TO BE USED. LENGTHS OF CABLE TO JUNCTION BOX SHOULD BE MADE SO THAT THE TOTAL LENGTH OF CABLES PER STRING IS EQUAL. THIS WILL MINIMIZE VARIATIONS OF RESISTANCE IN EACH STRING. HENCE EQUALLY DISTRIBUTE LOAD CURRENTS.



ITEM	DESCRIPTION
A	BUS BAR COVER
B	BUS BAR
C	SPRING LOCK WASHER
D	FLAT WASHER
E	FLAT WASHER
F	FLAT WASHER
G	FLAT WASHER
H	FLAT WASHER
I	FLAT WASHER
J	FLAT WASHER
K	FLAT WASHER
L	FLAT WASHER
M	FLAT WASHER
N	FLAT WASHER
O	FLAT WASHER
P	FLAT WASHER
Q	FLAT WASHER
R	FLAT WASHER
S	FLAT WASHER
T	FLAT WASHER
U	FLAT WASHER
V	FLAT WASHER
W	FLAT WASHER
X	FLAT WASHER
Y	FLAT WASHER
Z	FLAT WASHER
AA	FLAT WASHER
AB	FLAT WASHER
AC	FLAT WASHER
AD	FLAT WASHER
AE	FLAT WASHER
AF	FLAT WASHER
AG	FLAT WASHER
AH	FLAT WASHER
AI	FLAT WASHER
AJ	FLAT WASHER
AK	FLAT WASHER
AL	FLAT WASHER
AM	FLAT WASHER
AN	FLAT WASHER
AO	FLAT WASHER
AP	FLAT WASHER
AQ	FLAT WASHER
AR	FLAT WASHER
AS	FLAT WASHER
AT	FLAT WASHER
AU	FLAT WASHER
AV	FLAT WASHER
AW	FLAT WASHER
AX	FLAT WASHER
AY	FLAT WASHER
AZ	FLAT WASHER
BA	FLAT WASHER
BB	FLAT WASHER
BC	FLAT WASHER
BD	FLAT WASHER
BE	FLAT WASHER
BF	FLAT WASHER
BF	BATTERY TERMINAL DESCRIPTION

* USE (2) FLAT WASHER WHEN CABLES ARE BEING USED
 **USE (1) FLAT WASHER WHEN A BUS BAR IS BEING USED
 *** BUS BAR BOLTS SHALL BE USED IN EACH CONNECTION
 NOTE: ALL CONNECTIONS MUST BE RETORQUED ANNUALLY TO 115 IN-LBS.

IMPORTANT NOTE
 ALL CONNECTIONS TO BE RETORQUED ANNUALLY.
 ALL CONNECTIONS MUST BE CHECKED FOR PROPER TORQUE PRIOR TO START UP OR ENERGIZING OF SYSTEM.

NOTE:
 CABLES SIZED TO RESTRICT A VOLTAGE DROP OVER 2%

IMPORTANT NOTE
 THE CUSTOMER AND/OR CONTRACTOR SHALL BE RESPONSIBLE FOR INSTALLING THIS EQUIPMENT IN ACCORDANCE WITH ALL APPLICABLE CODES AND REGULATIONS.
 PLEASE REFER TO NEC 2008 SECTION 480-9 FOR THE REQUIREMENTS ON WORKING SPACES.

NO.	DATE	BY	SCALE	SERIAL#	DATE	DESCRIPTION	QTY.	PART NO.
12						12 EZ STACKING HARDWARE KIT	3	HK-0003
11						EZ ASSEMBLY HARDWARE KIT	5	HK-0001
10						EZ BUSBAR ASSEMBLY	1	EZ-9017
9						TERMINAL BOOTS (956D9V14)	8	AG-0011
8						BUSBAR (THICK)	5	CC-0058
7						CABLE 250 MCM MINIMUM	2	SHIPPED BY CUSTOMER
6						CABLE 4/0 GA. 60' LG.	1	4/0-60BE
5						CABLE 4/0 GA. 12' LG.	1	4/0-12BE
4						CABLE 4/0 GA. 12' LG.	8	4/0-12BE
3						BATTERY/BOOTS/HARDWARE	10	PSG-12255
2						RACK	1	EZ1
1						RACK	2	EZ2
SERIAL#					11/19/08			
REVISIONS								
NO.	DATE	BY	SCALE					
1		Kimberly						
2								
3								
4								
5								
DRAWING NO.					EZ1-0001			
DRAWING NO.					EZS-241275			



POWER
 POWER BATTERY COMPANY INC.
 BATTERY SYSTEM LAYOUT FOR
 (3) EZ RACKS (24 V.) WITH
 (10) 12 V. BATTERIES