

SYSTEM SPECIFICATIONS

SYSTEM MODEL NO.: EZS-241020
 SYSTEM RATING: 100 AMPS FOR 8 HOURS TO 1.75 VPC.
 RECOMMENDED SYSTEM FLOAT VOLTAGE: 27 MIN. 27.6 MAX.
 SYSTEM CUTOFF VOLTAGE: 21
 FULL LOAD CURRENT: 100 ADC
 OPEN CIRCUIT VOLTAGE: 24.8 - 25.8 VDC

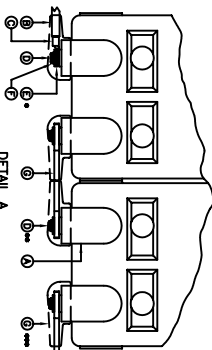
NOTE: CABLE/BUSBAR SIZED TO ACCOMMODATE 250 AMP SPIKE

① ALL RECOMMENDED CUSTOMER'S CABLE GAUGES ARE BASED ON TABLE 310-16 OF N.E.C. USING 75°C CABLE IN 30°C AMBIENT.

② USE INSULATED TOOLS FOR CABINET INSTALLATION.
 DO NOT ALLOW TOOLS OR CABLES TO REST ON BATTERIES.

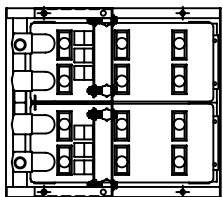
IMPORTANT NOTE

THE CUSTOMER AND/OR CONTRACTOR SHALL BE RESPONSIBLE FOR INSTALLING THIS EQUIPMENT IN ACCORDANCE WITH ALL APPLICABLE CODES AND REGULATIONS
 PLEASE REFER TO NEC 2008 SECTION 480-9 FOR THE REQUIREMENTS ON WORKING SPACES.



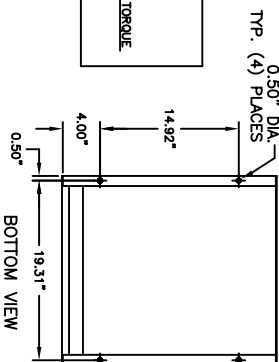
NO.	DESCRIPTION	QUANTITY
1	FLAT WASHER	1
2	FLAT WASHER	1
3	FLAT WASHER	1
4	FLAT WASHER	1
5	FLAT WASHER	1
6	FLAT WASHER	1
7	FLAT WASHER	1
8	FLAT WASHER	1
9	FLAT WASHER	1
10	FLAT WASHER	1
11	FLAT WASHER	1
12	FLAT WASHER	1
13	FLAT WASHER	1
14	FLAT WASHER	1
15	FLAT WASHER	1
16	FLAT WASHER	1
17	FLAT WASHER	1
18	FLAT WASHER	1
19	FLAT WASHER	1
20	FLAT WASHER	1
21	FLAT WASHER	1
22	FLAT WASHER	1
23	FLAT WASHER	1
24	FLAT WASHER	1
25	FLAT WASHER	1
26	FLAT WASHER	1
27	FLAT WASHER	1
28	FLAT WASHER	1
29	FLAT WASHER	1
30	FLAT WASHER	1
31	FLAT WASHER	1
32	FLAT WASHER	1
33	FLAT WASHER	1
34	FLAT WASHER	1
35	FLAT WASHER	1
36	FLAT WASHER	1
37	FLAT WASHER	1
38	FLAT WASHER	1
39	FLAT WASHER	1
40	FLAT WASHER	1
41	FLAT WASHER	1
42	FLAT WASHER	1
43	FLAT WASHER	1
44	FLAT WASHER	1
45	FLAT WASHER	1
46	FLAT WASHER	1
47	FLAT WASHER	1
48	FLAT WASHER	1
49	FLAT WASHER	1
50	FLAT WASHER	1
51	FLAT WASHER	1
52	FLAT WASHER	1
53	FLAT WASHER	1
54	FLAT WASHER	1
55	FLAT WASHER	1
56	FLAT WASHER	1
57	FLAT WASHER	1
58	FLAT WASHER	1
59	FLAT WASHER	1
60	FLAT WASHER	1
61	FLAT WASHER	1
62	FLAT WASHER	1
63	FLAT WASHER	1
64	FLAT WASHER	1
65	FLAT WASHER	1
66	FLAT WASHER	1
67	FLAT WASHER	1
68	FLAT WASHER	1
69	FLAT WASHER	1
70	FLAT WASHER	1
71	FLAT WASHER	1
72	FLAT WASHER	1
73	FLAT WASHER	1
74	FLAT WASHER	1
75	FLAT WASHER	1
76	FLAT WASHER	1
77	FLAT WASHER	1
78	FLAT WASHER	1
79	FLAT WASHER	1
80	FLAT WASHER	1
81	FLAT WASHER	1
82	FLAT WASHER	1
83	FLAT WASHER	1
84	FLAT WASHER	1
85	FLAT WASHER	1
86	FLAT WASHER	1
87	FLAT WASHER	1
88	FLAT WASHER	1
89	FLAT WASHER	1
90	FLAT WASHER	1
91	FLAT WASHER	1
92	FLAT WASHER	1
93	FLAT WASHER	1
94	FLAT WASHER	1
95	FLAT WASHER	1
96	FLAT WASHER	1
97	FLAT WASHER	1
98	FLAT WASHER	1
99	FLAT WASHER	1
100	FLAT WASHER	1

* USE (2) FLAT WASHER WHEN CABLES ARE BEING USED
 ** USE (1) FLAT WASHER WHEN A BUS BAR IS BEING USED
 *** BUS BAR BOLTS SHALL BE USED IN EACH CONNECTION
 NOTE: ALL CONNECTIONS MUST BE RETORQUED ANNUALLY TO 115 IN-LES.

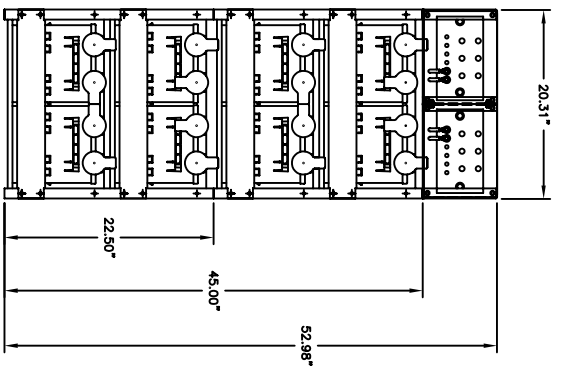


TOP VIEW

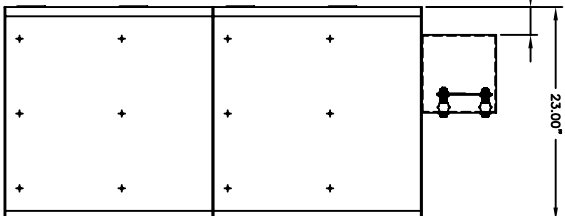
IMPORTANT NOTE
 ALL CONNECTIONS TO BE RETORQUED ANNUALLY.
 ALL CONNECTIONS MUST BE CHECKED FOR PROPER TORQUE PRIOR TO START UP OR EMERGING OF SYSTEM.



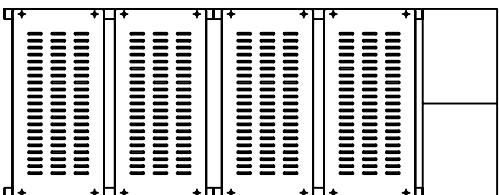
BOTTOM VIEW



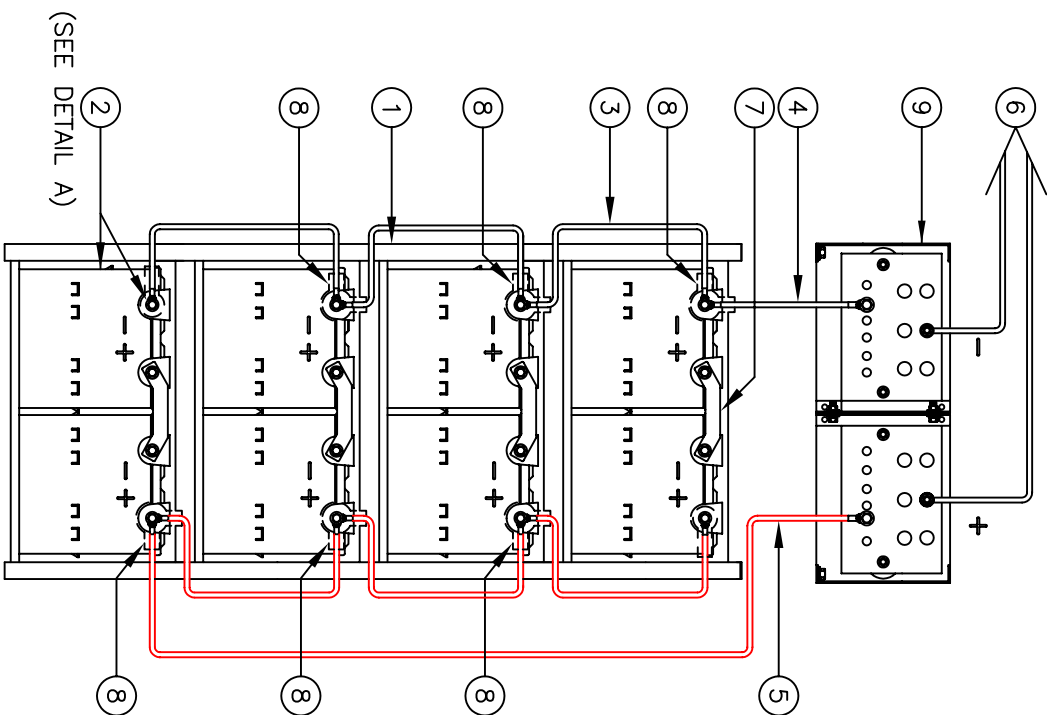
FRONT VIEW



SIDE VIEW



BACK VIEW



WIRING DIAGRAM

(SEE DETAIL A)

PARALLEL CONNECTOR:

WIRE SIZE WILL BE SPECIFIED AS PER GAUGE (MINIMUM) TO BE USED. LENGTHS OF CABLE TO JUNCTION BOX SHOULD BE MADE SO THAT THE TOTAL LENGTH OF CABLES PER STRING IS EQUAL. THIS WILL MINIMIZE VARIATIONS OF RESISTANCE IN EACH STRING. HENCE EQUALLY DISTRIBUTE LOAD CURRENTS.

NOTE:
 * ALTERNATE METHOD MAY BE USED TO CONNECT TWO SYSTEMS ACCORDING TO CUSTOMERS SPECIFICATIONS.

NOTE:
 CABLES SIZED TO RESTRICT A VOLTAGE DROP OVER 2%

NO.	SERIAL #	DATE	DESCRIPTION	QTY.	PART NO.
1		11/4/08	POWER BATTERY COMPANY INC. BATTERY SYSTEM LAYOUT FOR (2) EZ RACKS (24 V.) WITH (8) 12 V. BATTERIES	2	EZ1
2					
3					
4					
5					



POWER BATTERY COMPANY INC.
 BATTERY SYSTEM LAYOUT FOR
 (2) EZ RACKS (24 V.) WITH
 (8) 12 V. BATTERIES
 PART NO. EZS-241020