

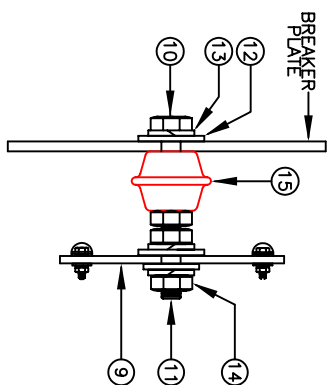
SYSTEM SPECIFICATIONS

SYSTEM MODEL NO. CZS-48840
 SYSTEM RATING: 87.5 AMPS FOR 8 HOURS TO 1.75 VPC.
 RECOMMENDED SYSTEM FLOAT VOLTAGE: 54.48 MIN. 55.2 MAX.
 SYSTEM CUTOFF VOLTAGE: 42
 FULL LOAD CURRENT: 87.5 ADC
 FULL LOAD CURRENT PER SERIES CIRCUIT: 12.5 ADC
 OPEN CIRCUIT VOLTAGE: 49.6 - 51.6 VDC

- NOTE: SYSTEM IS SIZED TO ACCOMMODATE A 250 AMP SPIKE
- ① ALL RECOMMENDED CUSTOMER'S CABLE GAUGES ARE BASED ON TABLE 310-16 OF N.E.C. USING 75°C CABLE IN 30°C AMBIENT.
 - ② SEE BATTERY LABEL FOR TORQUE VALUES
 - ③ USE INSULATED TOOLS FOR CABINET INSTALLATION. DO NOT ALLOW TOOLS OR CABLES TO REST ON BATTERIES.

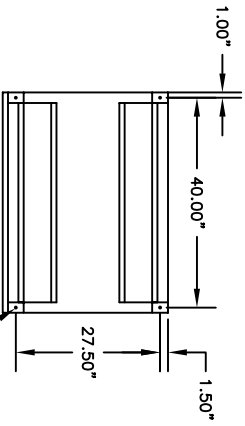
PARALLEL CONNECTOR:
 WIRE SIZE WILL BE SPECIFIED AS PER GAUGE (MINIMUM) TO BE USED. LENGTHS OF CABLE TO JUNCTION BOX SHOULD BE MADE SO THAT THE TOTAL LENGTH OF CABLES PER STRING IS EQUAL. THIS WILL MINIMIZE VARIATIONS OF RESISTANCE IN EACH STRING. HENCE EQUALLY DISTRIBUTE LOAD CURRENTS.

NOTE:
 * ALTERNATE METHOD MAY BE USED TO CONNECT TWO SYSTEMS ACCORDING TO CUSTOMER SPECIFICATIONS.



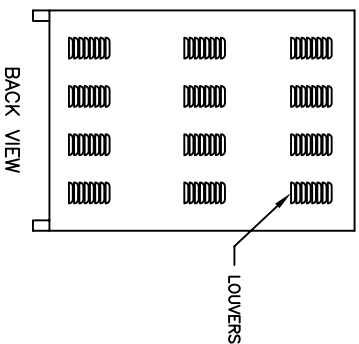
DETAIL B
 BUSBAR ASSEMBLY

IMPORTANT NOTES
 THE CUSTOMER AND/OR CONTRACTOR SHALL BE RESPONSIBLE FOR INSTALLING THIS EQUIPMENT IN ACCORDANCE WITH ALL APPLICABLE CODES AND REGULATIONS
 WHEN HANDLING, KEEP UPRIGHT WITHIN +/- 15 DEGREES.
 PLEASE REFER TO 2008 NEC SECTION 480-9 FOR THE REQUIREMENTS ON WORKING SPACES.

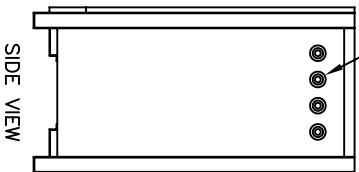


BOTTOM VIEW

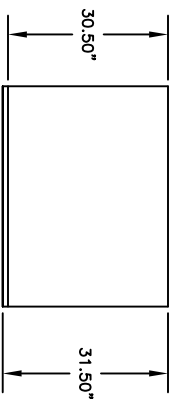
TRIPLE KNOCKOUTS
 $\phi 1 \frac{3}{32}''$ X $\phi 1 \frac{31}{32}''$ X $\phi \frac{3}{8}''$
 TYP (4) PLACES BOTH SIDE



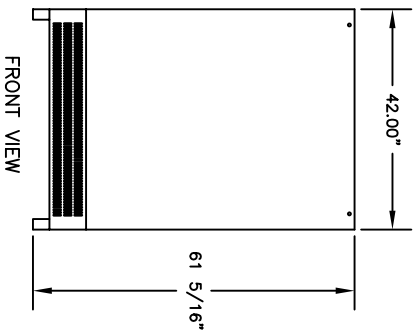
BACK VIEW



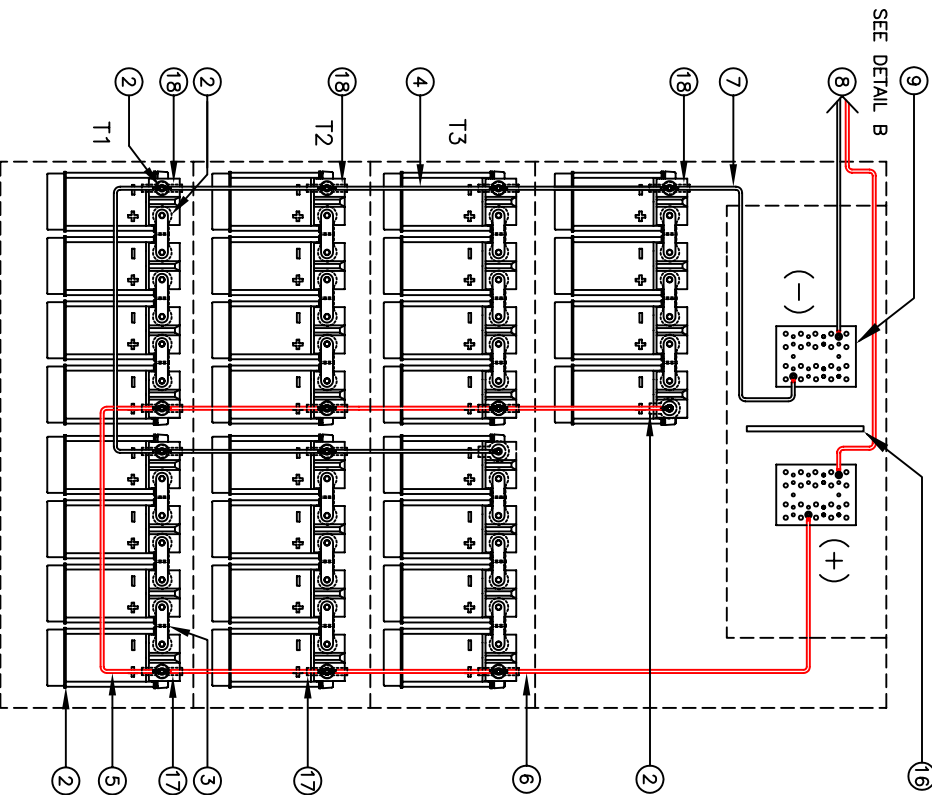
SIDE VIEW



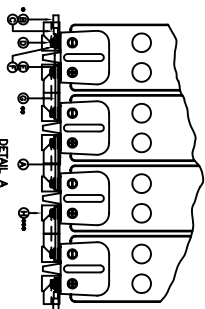
TOP VIEW



FRONT VIEW



WIRING DIAGRAM



DETAIL A

ITEM	DESCRIPTION	QTY	UNIT
1	FLAT WASHER	1	EA
2	NUT	1	EA
3	WASHER	1	EA
4	WASHER	1	EA
5	WASHER	1	EA
6	WASHER	1	EA
7	WASHER	1	EA
8	WASHER	1	EA
9	WASHER	1	EA
10	WASHER	1	EA
11	WASHER	1	EA
12	WASHER	1	EA
13	WASHER	1	EA
14	WASHER	1	EA
15	WASHER	1	EA
16	WASHER	1	EA
17	WASHER	1	EA
18	WASHER	1	EA
19	WASHER	1	EA
20	WASHER	1	EA
21	WASHER	1	EA
22	WASHER	1	EA
23	WASHER	1	EA
24	WASHER	1	EA
25	WASHER	1	EA
26	WASHER	1	EA
27	WASHER	1	EA
28	WASHER	1	EA
29	WASHER	1	EA
30	WASHER	1	EA
31	WASHER	1	EA
32	WASHER	1	EA
33	WASHER	1	EA
34	WASHER	1	EA
35	WASHER	1	EA
36	WASHER	1	EA
37	WASHER	1	EA
38	WASHER	1	EA
39	WASHER	1	EA
40	WASHER	1	EA
41	WASHER	1	EA
42	WASHER	1	EA
43	WASHER	1	EA
44	WASHER	1	EA
45	WASHER	1	EA
46	WASHER	1	EA
47	WASHER	1	EA
48	WASHER	1	EA
49	WASHER	1	EA
50	WASHER	1	EA
51	WASHER	1	EA
52	WASHER	1	EA
53	WASHER	1	EA
54	WASHER	1	EA
55	WASHER	1	EA
56	WASHER	1	EA
57	WASHER	1	EA
58	WASHER	1	EA
59	WASHER	1	EA
60	WASHER	1	EA
61	WASHER	1	EA
62	WASHER	1	EA
63	WASHER	1	EA
64	WASHER	1	EA
65	WASHER	1	EA
66	WASHER	1	EA
67	WASHER	1	EA
68	WASHER	1	EA
69	WASHER	1	EA
70	WASHER	1	EA
71	WASHER	1	EA
72	WASHER	1	EA
73	WASHER	1	EA
74	WASHER	1	EA
75	WASHER	1	EA
76	WASHER	1	EA
77	WASHER	1	EA
78	WASHER	1	EA
79	WASHER	1	EA
80	WASHER	1	EA
81	WASHER	1	EA
82	WASHER	1	EA
83	WASHER	1	EA
84	WASHER	1	EA
85	WASHER	1	EA
86	WASHER	1	EA
87	WASHER	1	EA
88	WASHER	1	EA
89	WASHER	1	EA
90	WASHER	1	EA
91	WASHER	1	EA
92	WASHER	1	EA
93	WASHER	1	EA
94	WASHER	1	EA
95	WASHER	1	EA
96	WASHER	1	EA
97	WASHER	1	EA
98	WASHER	1	EA
99	WASHER	1	EA
100	WASHER	1	EA

* USE (2) FLAT WASHER WHEN CABLES ARE TIGHTLY USED
 ** END BUSH BOOTS SHALL BE USED IN BUSH CONNECTION
 *** ALL CONNECTIONS MUST BE RETORQUED ANNUALLY
 **** ANNULITY TO 115 N-1-158

IMPORTANT NOTE
 ALL CONNECTIONS MUST BE CHECKED FOR PROPER TORQUE PRIOR TO START UP OR ENERGIZING OF SYSTEM.

NOTE:
 CABLES SIZED TO RESTRICT A VOLTAGE DROP OVER 2%

ITEM	DESCRIPTION	QTY	UNIT
1	BATTERY RAIL INSULATION	12	EA
2	TERMINAL BOOT (GREEN/YEL) BLACK	6	EA
3	TERMINAL BOOT (GREEN/YEL) RED	6	EA
4	TERMINAL BOOT (GREEN/YEL) BLACK	6	EA
5	TERMINAL BOOT (GREEN/YEL) RED	6	EA
6	TERMINAL BOOT (GREEN/YEL) BLACK	6	EA
7	TERMINAL BOOT (GREEN/YEL) RED	6	EA
8	TERMINAL BOOT (GREEN/YEL) BLACK	6	EA
9	TERMINAL BOOT (GREEN/YEL) BLACK	6	EA
10	TERMINAL BOOT (GREEN/YEL) RED	6	EA
11	TERMINAL BOOT (GREEN/YEL) BLACK	6	EA
12	TERMINAL BOOT (GREEN/YEL) RED	6	EA
13	TERMINAL BOOT (GREEN/YEL) BLACK	6	EA
14	TERMINAL BOOT (GREEN/YEL) RED	6	EA
15	TERMINAL BOOT (GREEN/YEL) BLACK	6	EA
16	TERMINAL BOOT (GREEN/YEL) RED	6	EA
17	TERMINAL BOOT (GREEN/YEL) BLACK	6	EA
18	TERMINAL BOOT (GREEN/YEL) RED	6	EA
19	TERMINAL BOOT (GREEN/YEL) BLACK	6	EA
20	TERMINAL BOOT (GREEN/YEL) RED	6	EA
21	TERMINAL BOOT (GREEN/YEL) BLACK	6	EA
22	TERMINAL BOOT (GREEN/YEL) RED	6	EA
23	TERMINAL BOOT (GREEN/YEL) BLACK	6	EA
24	TERMINAL BOOT (GREEN/YEL) RED	6	EA
25	TERMINAL BOOT (GREEN/YEL) BLACK	6	EA
26	TERMINAL BOOT (GREEN/YEL) RED	6	EA
27	TERMINAL BOOT (GREEN/YEL) BLACK	6	EA
28	TERMINAL BOOT (GREEN/YEL) RED	6	EA
29	TERMINAL BOOT (GREEN/YEL) BLACK	6	EA
30	TERMINAL BOOT (GREEN/YEL) RED	6	EA
31	TERMINAL BOOT (GREEN/YEL) BLACK	6	EA
32	TERMINAL BOOT (GREEN/YEL) RED	6	EA
33	TERMINAL BOOT (GREEN/YEL) BLACK	6	EA
34	TERMINAL BOOT (GREEN/YEL) RED	6	EA
35	TERMINAL BOOT (GREEN/YEL) BLACK	6	EA
36	TERMINAL BOOT (GREEN/YEL) RED	6	EA
37	TERMINAL BOOT (GREEN/YEL) BLACK	6	EA
38	TERMINAL BOOT (GREEN/YEL) RED	6	EA
39	TERMINAL BOOT (GREEN/YEL) BLACK	6	EA
40	TERMINAL BOOT (GREEN/YEL) RED	6	EA
41	TERMINAL BOOT (GREEN/YEL) BLACK	6	EA
42	TERMINAL BOOT (GREEN/YEL) RED	6	EA
43	TERMINAL BOOT (GREEN/YEL) BLACK	6	EA
44	TERMINAL BOOT (GREEN/YEL) RED	6	EA
45	TERMINAL BOOT (GREEN/YEL) BLACK	6	EA
46	TERMINAL BOOT (GREEN/YEL) RED	6	EA
47	TERMINAL BOOT (GREEN/YEL) BLACK	6	EA
48	TERMINAL BOOT (GREEN/YEL) RED	6	EA
49	TERMINAL BOOT (GREEN/YEL) BLACK	6	EA
50	TERMINAL BOOT (GREEN/YEL) RED	6	EA
51	TERMINAL BOOT (GREEN/YEL) BLACK	6	EA
52	TERMINAL BOOT (GREEN/YEL) RED	6	EA
53	TERMINAL BOOT (GREEN/YEL) BLACK	6	EA
54	TERMINAL BOOT (GREEN/YEL) RED	6	EA
55	TERMINAL BOOT (GREEN/YEL) BLACK	6	EA
56	TERMINAL BOOT (GREEN/YEL) RED	6	EA
57	TERMINAL BOOT (GREEN/YEL) BLACK	6	EA
58	TERMINAL BOOT (GREEN/YEL) RED	6	EA
59	TERMINAL BOOT (GREEN/YEL) BLACK	6	EA
60	TERMINAL BOOT (GREEN/YEL) RED	6	EA
61	TERMINAL BOOT (GREEN/YEL) BLACK	6	EA
62	TERMINAL BOOT (GREEN/YEL) RED	6	EA
63	TERMINAL BOOT (GREEN/YEL) BLACK	6	EA
64	TERMINAL BOOT (GREEN/YEL) RED	6	EA
65	TERMINAL BOOT (GREEN/YEL) BLACK	6	EA
66	TERMINAL BOOT (GREEN/YEL) RED	6	EA
67	TERMINAL BOOT (GREEN/YEL) BLACK	6	EA
68	TERMINAL BOOT (GREEN/YEL) RED	6	EA
69	TERMINAL BOOT (GREEN/YEL) BLACK	6	EA
70	TERMINAL BOOT (GREEN/YEL) RED	6	EA
71	TERMINAL BOOT (GREEN/YEL) BLACK	6	EA
72	TERMINAL BOOT (GREEN/YEL) RED	6	EA
73	TERMINAL BOOT (GREEN/YEL) BLACK	6	EA
74	TERMINAL BOOT (GREEN/YEL) RED	6	EA
75	TERMINAL BOOT (GREEN/YEL) BLACK	6	EA
76	TERMINAL BOOT (GREEN/YEL) RED	6	EA
77	TERMINAL BOOT (GREEN/YEL) BLACK	6	EA
78	TERMINAL BOOT (GREEN/YEL) RED	6	EA
79	TERMINAL BOOT (GREEN/YEL) BLACK	6	EA
80	TERMINAL BOOT (GREEN/YEL) RED	6	EA
81	TERMINAL BOOT (GREEN/YEL) BLACK	6	EA
82	TERMINAL BOOT (GREEN/YEL) RED	6	EA
83	TERMINAL BOOT (GREEN/YEL) BLACK	6	EA
84	TERMINAL BOOT (GREEN/YEL) RED	6	EA
85	TERMINAL BOOT (GREEN/YEL) BLACK	6	EA
86	TERMINAL BOOT (GREEN/YEL) RED	6	EA
87	TERMINAL BOOT (GREEN/YEL) BLACK	6	EA
88	TERMINAL BOOT (GREEN/YEL) RED	6	EA
89	TERMINAL BOOT (GREEN/YEL) BLACK	6	EA
90	TERMINAL BOOT (GREEN/YEL) RED	6	EA
91	TERMINAL BOOT (GREEN/YEL) BLACK	6	EA
92	TERMINAL BOOT (GREEN/YEL) RED	6	EA
93	TERMINAL BOOT (GREEN/YEL) BLACK	6	EA
94	TERMINAL BOOT (GREEN/YEL) RED	6	EA
95	TERMINAL BOOT (GREEN/YEL) BLACK	6	EA
96	TERMINAL BOOT (GREEN/YEL) RED	6	EA
97	TERMINAL BOOT (GREEN/YEL) BLACK	6	EA
98	TERMINAL BOOT (GREEN/YEL) RED	6	EA
99	TERMINAL BOOT (GREEN/YEL) BLACK	6	EA
100	TERMINAL BOOT (GREEN/YEL) RED	6	EA

POWER
 BATTERY SYSTEM LAUNCH FOR
 WITH (28) 12 V. BATTERIES
 CZS-48840