

SYSTEM SPECIFICATIONS

SYSTEM MODEL NO. CZS-48765
 SYSTEM RATING: 75 AMPS FOR 8 HOURS TO 1.75 VPC.
 RECOMMENDED SYSTEM FLOAT VOLTAGE: 54.48 MIN. 55.2 MAX.
 SYSTEM CUTOFF VOLTAGE: 42
 FULL LOAD CURRENT: 75 ADC
 FULL LOAD CURRENT PER SERIES CIRCUIT: 25 ADC
 OPEN CIRCUIT VOLTAGE: 49.6 - 51.6 VDC

NOTE: SYSTEM IS SIZED TO ACCOMMODATE A 250 AMP SPIKE
 ① ALL RECOMMENDED CUSTOMER'S CABLE GAUGES ARE BASED ON TABLE 310-16 OF N.E.C. USING 75°C CABLE IN 30°C AMBIENT.

② SEE BATTERY LABEL FOR TORQUE VALUES

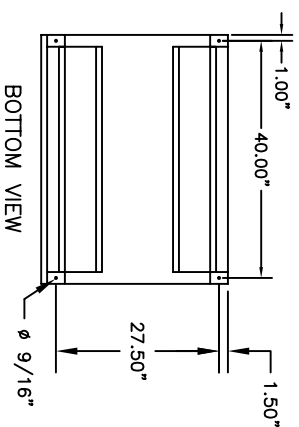
③ USE INSULATED TOOLS FOR CABINET INSTALLATION, DO NOT ALLOW TOOLS OR CABLES TO REST ON BATTERIES.

PARALLEL CONNECTOR:

WIRE SIZE WILL BE SPECIFIED AS PER GAUGE (MINIMUM) TO BE USED. LENGTHS OF CABLE TO JUNCTION BOX SHOULD BE MADE SO THAT THE TOTAL LENGTH OF CABLES PER STRING IS EQUAL. THIS WILL MINIMIZE VARIATIONS OF RESISTANCE IN EACH STRING. HENCE EQUALLY DISTRIBUTE LOAD CURRENTS.

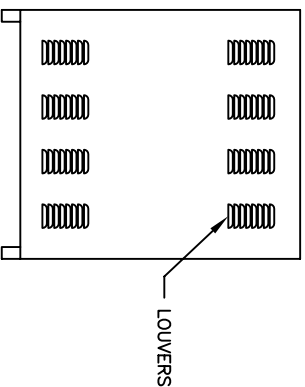
NOTE:

* ALTERNATE METHOD MAY BE USED TO CONNECT TWO SYSTEMS ACCORDING TO CUSTOMER SPECIFICATIONS.

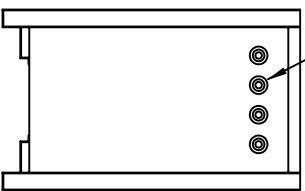


BOTTOM VIEW

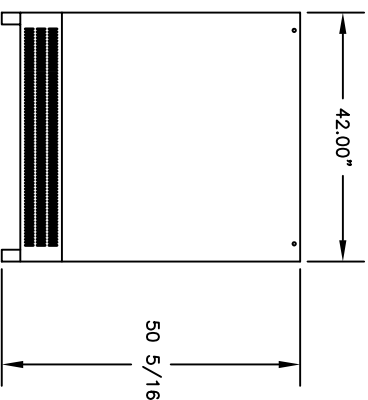
TRIPLE KNOCKOUTS
 Ø1 3/32" X Ø1 31/32" X Ø3/8"
 TYP (4) PLACES BOTH SIDE



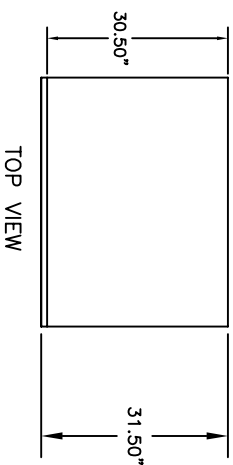
BACK VIEW



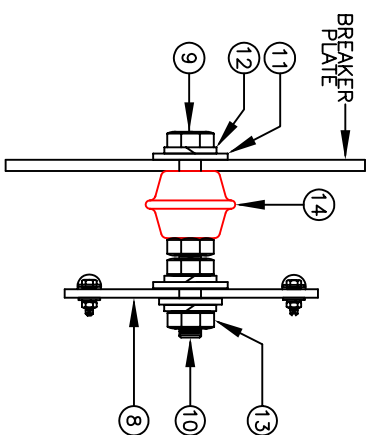
SIDE VIEW



FRONT VIEW



TOP VIEW



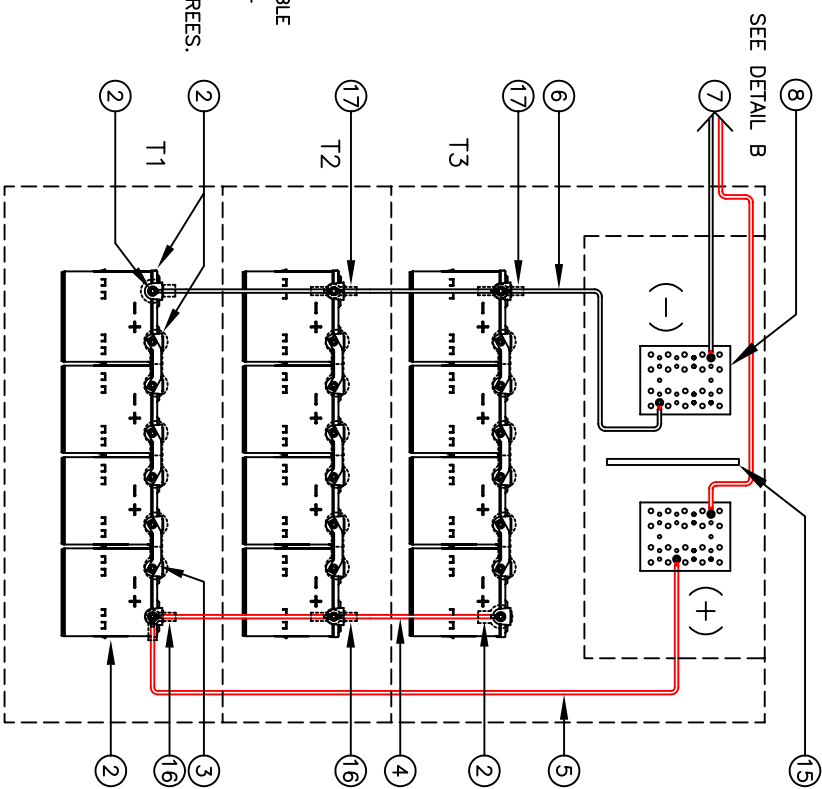
DETAIL B
 BUSBAR ASSEMBLY

IMPORTANT NOTES

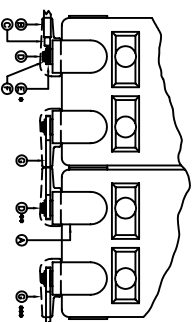
THE CUSTOMER AND/OR CONTRACTOR SHALL BE RESPONSIBLE FOR INSTALLING THIS EQUIPMENT IN ACCORDANCE WITH ALL APPLICABLE CODES AND REGULATIONS

WHEN HANDLING, KEEP UPRIGHT WITHIN +/- 15 DEGREES.

PLEASE REFER TO 2008 NEC SECTION 480-9 FOR THE REQUIREMENTS ON WORKING SPACES.



WIRING DIAGRAM



DETAIL A
 TERMINAL CONNECTIONS

NO.	DESCRIPTION	QTY
1	BATTERY/BOOTS/HARDWARE	12
2	CABLE	1
3	BATTERY/BOOTS/HARDWARE	12
4	CABLE	4
5	CABLE	1
6	CABLE	1
7	CABLE	1
8	BUSBAR (1200A)	2
9	BUSBAR (1200A)	2
10	5/16-18 UNC X 5/8" HEX HEAD SYSTEM	2
11	5/16-18 UNC X 3/4" FLATLY THREADED STUD	2
12	5/16-18 UNC X 5/8" HEX HEAD SYSTEM	2
13	5/16-18 UNC X 3/4" FLATLY THREADED STUD	2
14	5/16-18 UNC X 3/4" FLATLY THREADED STUD	2
15	5/16-18 UNC X 3/4" FLATLY THREADED STUD	2
16	5/16-18 UNC X 3/4" FLATLY THREADED STUD	2
17	5/16-18 UNC X 3/4" FLATLY THREADED STUD	2

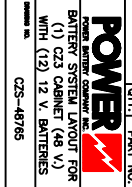
* USE (2) FLAT WASHER WHEN CABLES ARE BEING USED
 ** USE (1) FLAT WASHER WHEN A BUS BAR IS BEING USED
 *** BUS BAR CONNECTIONS MUST BE PERFORMED IN ACCORDANCE WITH THE REQUIREMENTS OF THE 2008 NEC
 SEE THE BATTERY CONNECTIONS LABEL FOR CONNECTIONS
 ANNUALLY TO 115 M-15C.

IMPORTANT NOTE

ALL CONNECTIONS TO BE RETORQUED ANNUALLY.
 ALL CONNECTIONS MUST BE CHECKED FOR PROPER TORQUE PRIOR TO START UP OR ENERGIZING OF SYSTEM.

NOTE: CABLES SIZED TO RESTRICT A VOLTAGE DROP OVER 2%

NO.	DESCRIPTION	QTY	PART NO.
1	BATTERY/BOOTS/HARDWARE	12	CZS
2	CABLE	1	CZS
3	BATTERY/BOOTS/HARDWARE	12	CZS
4	CABLE	4	CZS
5	CABLE	1	CZS
6	CABLE	1	CZS
7	CABLE	1	CZS
8	BUSBAR (1200A)	2	CZS
9	BUSBAR (1200A)	2	CZS
10	5/16-18 UNC X 5/8" HEX HEAD SYSTEM	2	CZS
11	5/16-18 UNC X 3/4" FLATLY THREADED STUD	2	CZS
12	5/16-18 UNC X 5/8" HEX HEAD SYSTEM	2	CZS
13	5/16-18 UNC X 3/4" FLATLY THREADED STUD	2	CZS
14	5/16-18 UNC X 3/4" FLATLY THREADED STUD	2	CZS
15	5/16-18 UNC X 3/4" FLATLY THREADED STUD	2	CZS
16	5/16-18 UNC X 3/4" FLATLY THREADED STUD	2	CZS
17	5/16-18 UNC X 3/4" FLATLY THREADED STUD	2	CZS



CZS-48765