

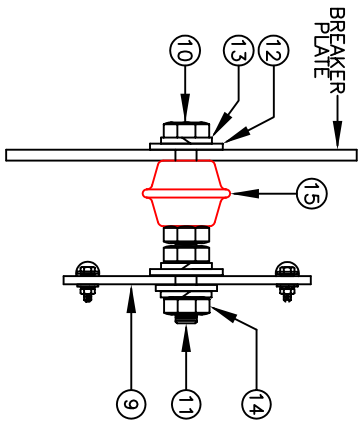
# SYSTEM SPECIFICATIONS

SYSTEM MODEL NO. CZS-48600  
 SYSTEM RATING: 62.5 AMPS FOR 8 HOURS TO 1.75 VFC.  
 RECOMMENDED SYSTEM FLOAT VOLTAGE: 54.48 MIN. 55.2 MAX.  
 SYSTEM CUTOFF VOLTAGE: 42  
 FULL LOAD CURRENT: 62.5 ADC  
 FULL LOAD CURRENT PER SERIES CIRCUIT: 12.5 ADC  
 OPEN CIRCUIT VOLTAGE: 49.6 - 51.6 VDC

- NOTE: SYSTEM IS SIZED TO ACCOMMODATE A 175 AMP SPIKE
- 1 ALL RECOMMENDED CUSTOMER'S CABLE GAUGES ARE BASED ON TABLE 310-16 OF N.E.C. USING 75°C CABLE IN 30°C AMBIENT.
  - 2 SEE BATTERY LABEL FOR TORQUE VALUES
  - 3 USE INSULATED TOOLS FOR CABINET INSTALLATION. DO NOT ALLOW TOOLS OR CABLES TO REST ON BATTERIES.

PARALLEL CONNECTOR:  
 WIRE SIZE WILL BE SPECIFIED AS PER GAUGE (MINIMUM) TO BE USED. LENGTHS OF CABLE TO JUNCTION BOX SHOULD BE MADE SO THAT THE TOTAL LENGTH OF CABLES PER STRING IS EQUAL. THIS WILL MINIMIZE VARIATIONS OF RESISTANCE IN EACH STRING. HENCE EQUALLY DISTRIBUTE LOAD CURRENTS.

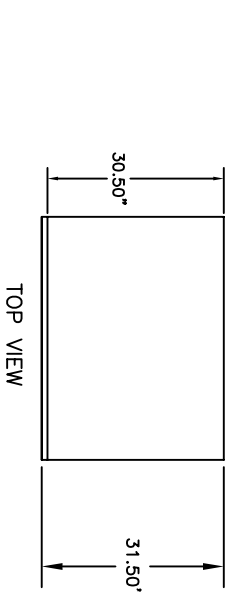
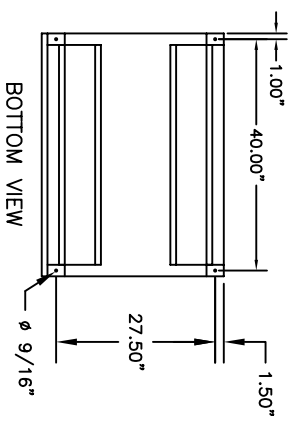
NOTE:  
 \* ALTERNATE METHOD MAY BE USED TO CONNECT TWO SYSTEMS ACCORDING TO CUSTOMER SPECIFICATIONS.



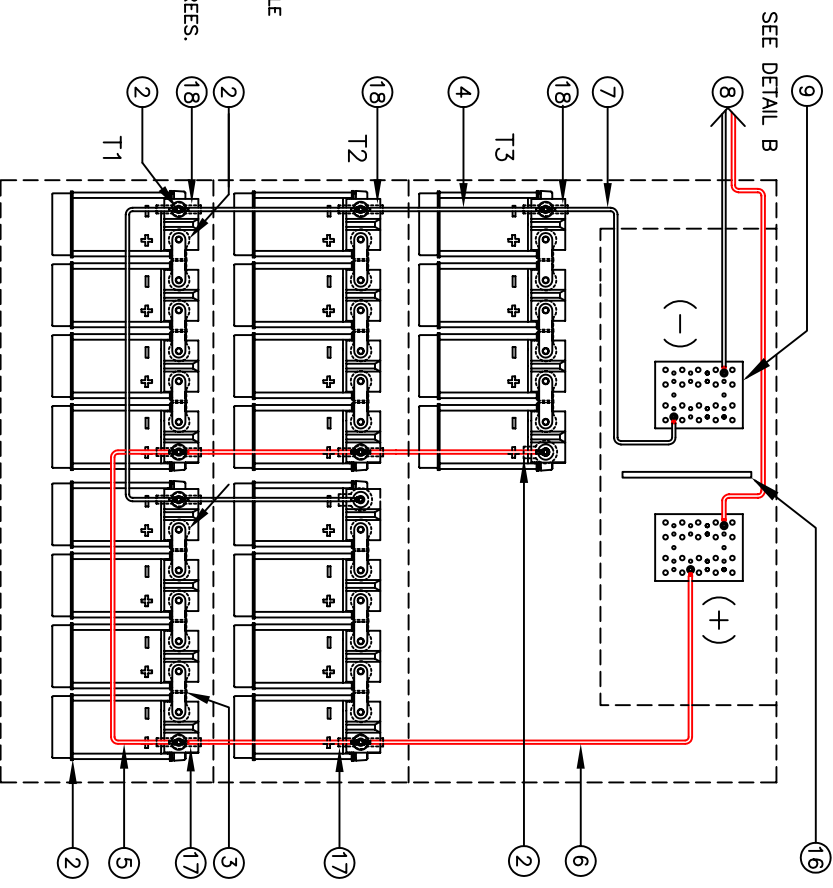
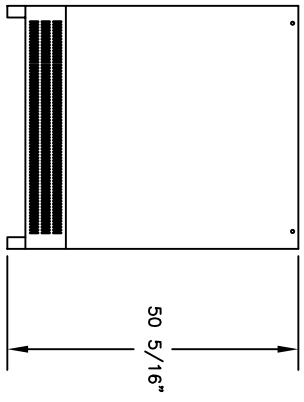
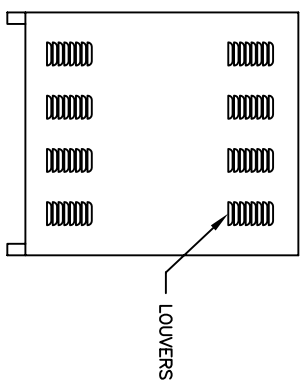
DETAIL B  
 BUSBAR ASSEMBLY

**IMPORTANT NOTES**  
 THE CUSTOMER AND/OR CONTRACTOR SHALL BE RESPONSIBLE FOR INSTALLING THIS EQUIPMENT IN ACCORDANCE WITH ALL APPLICABLE CODES AND REGULATIONS

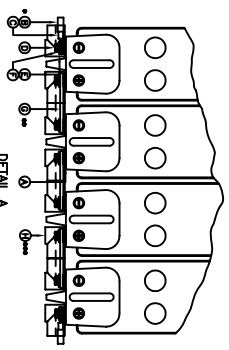
WHEN HANDLING, KEEP UPRIGHT WITHIN +/- 15 DEGREES.  
 PLEASE REFER TO 2008 NEC SECTION 480-9 FOR THE REQUIREMENTS ON WORKING SPACES.



TRIPLE KNOCKOUTS  
 TYP (4) PLACES BOTH SIDE



WIRING DIAGRAM



ITEM	DESCRIPTION	QTY
1	BUS BAR COVER	1
2	SCREW W/FLAT WASHER	6
3	FLAT WASHER	6
4	HEX NUT	6
5	HEX HEAD SCREW	6
6	FLAT WASHER	6
7	FLAT WASHER	6
8	FLAT WASHER	6
9	BUSBAR (1200A)	2
10	5/16-18 UNC X 5/8" HEX HEAD SCREW	2
11	5/16-18 UNC X 2" FLAT TYPED STUD	2
12	5/16-18 UNC X 5/8" HEX HEAD SCREW	2
13	5/16-18 UNC X 5/8" HEX HEAD SCREW	2
14	5/16-18 UNC X 5/8" HEX HEAD SCREW	2
15	5/16-18 UNC X 5/8" HEX HEAD SCREW	2
16	5/16-18 UNC X 5/8" HEX HEAD SCREW	2
17	5/16-18 UNC X 5/8" HEX HEAD SCREW	2
18	5/16-18 UNC X 5/8" HEX HEAD SCREW	2

\* USE (2) FLAT WASHER WHEN CABLES ARE BEING USED  
 \*\* USE (1) FLAT WASHER WHEN A BUS BAR IS BEING USED  
 \*\*\* BUS BAR BOLTS SHALL BE USED IN EACH CONNECTION  
 \*\*\*\* ALL CONNECTIONS MUST BE RETORQUED  
 ANNUALLY TO 115 IN-LBS.

**IMPORTANT NOTE**  
 ALL CONNECTIONS TO BE RETORQUED ANNUALLY.  
 ALL CONNECTIONS MUST BE CHECKED FOR PROPER TORQUE  
 PRIOR TO START UP OR ENERGIZING OF SYSTEM.

NOTE: CABLES SIZED TO RESTRICT A VOLTAGE DROP OVER 2%

NO.	DESCRIPTION	QTY	PART NO.
1	CABINET	1	CZS
2	BATTERY/BOOTS/HARDWARE	20	PS5-12120BT
3	SEALANT	1	PS5-12120BT
4	REVISIONS		
5	NO.		
6	DATE		
7	BY		
8	CHKD BY		
9	APPROVED BY		
10	DESIGNED BY		
11	DRAWN BY		
12	CHECKED BY		
13	DATE		
14	BY		
15	CHKD BY		
16	APPROVED BY		
17	DATE		
18	BY		
19	CHKD BY		
20	APPROVED BY		

POWER  
 POWER BATTERY COMPANY INC.  
 BATTERY SYSTEMS  
 WITH (20) 12 V. BATTERIES

Model No. CZS-48600