

SYSTEM SPECIFICATIONS

SYSTEM MODEL NO. C2S-483060
 SYSTEM RATING: 300 AMPS FOR 8 HOURS TO 1.75 VFC.
 RECOMMENDED SYSTEM FLOAT VOLTAGE: 54.48 MIN. 55.2 MAX.
 SYSTEM CUTOFF VOLTAGE: 42
 FULL LOAD CURRENT: 170 ADC
 OPEN CIRCUIT VOLTAGE: 49.6 - 51.6 VDC

NOTE: SYSTEM IS SIZED TO ACCOMMODATE A 300 AMP SPIKE

- ① ALL RECOMMENDED CUSTOMER'S CABLE GAUGES ARE BASED ON TABLE 310-16 OF N.E.C. USING 75°C CABLE IN 30°C AMBIENT. ASSUMING CABINETS ARE FLUSH TO ONE ANOTHER INTERCABINET CABLING IS BASED ON TABLE 310-17 OF N.E.C USING 90°C CABLE IN 30°C AMBIENT.
- ② ANY DEVIATION FROM THIS CONFIGURATION REQUIRES THE CUSTOMER TO SIZE INTERCABINET CABLES RECOMMENDED BY N.E.C. TABLE 310-16 USING 75°C IN 30°C AMBIENT.
- ③ SEE BATTERY LABEL FOR TORQUE VALUES
 DO NOT ALLOW TOOLS FOR CABINET INSTALLATION.
 DO NOT ALLOW TOOLS OR CABLES TO REST ON BATTERIES.

PARALLEL CONNECTOR:
 WIRE SIZE WILL BE SPECIFIED AS PER GAUGE (MINIMUM) TO BE USED. LENGTHS OF CABLE TO JUNCTION BOX SHOULD BE MADE SO THAT THE TOTAL LENGTH OF CABLES PER STRING IS EQUAL. THIS WILL MINIMIZE VARIATIONS OF RESISTANCE IN EACH STRING.
 HENCE EQUALLY DISTRIBUTE LOAD CURRENTS.

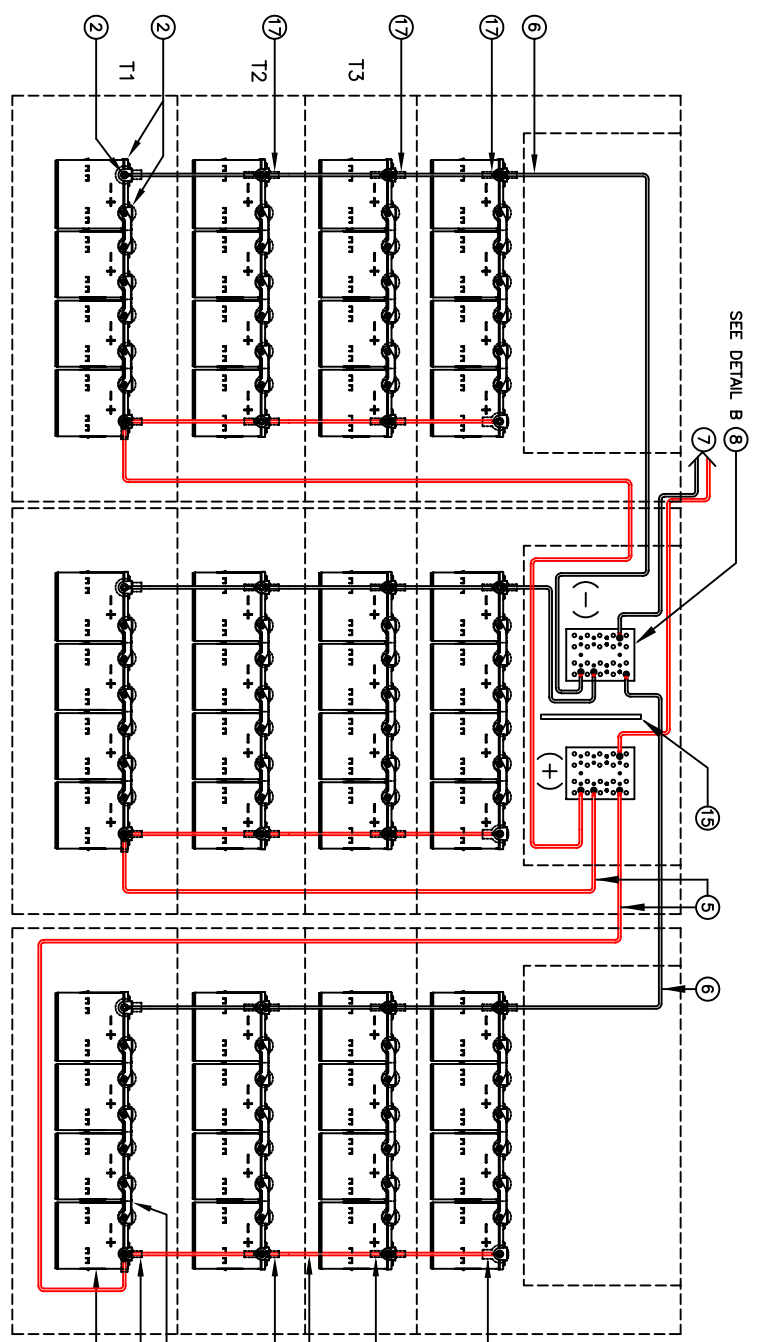
NOTE:
 * ALTERNATE METHOD MAY BE USED TO CONNECT TWO SYSTEMS ACCORDING TO CUSTOMER SPECIFICATIONS.

IMPORTANT NOTES

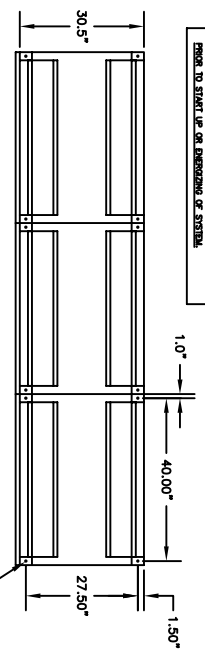
THE CUSTOMER AND/OR CONTRACTOR SHALL BE RESPONSIBLE FOR INSTALLING THIS EQUIPMENT IN ACCORDANCE WITH ALL APPLICABLE CODES AND REGULATIONS
 WHEN HANDLING, KEEP UPRIGHT WITHIN +/- 15 DEGREES.
 PLEASE REFER TO 2008 NEC SECTION 480-9 FOR THE REQUIREMENTS ON WORKING SPACES.

IMPORTANT NOTE

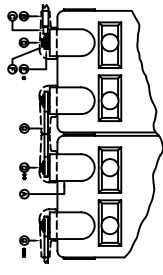
ALL CONNECTIONS TO BE MADE ACCORDING TO THE MANUFACTURER'S INSTRUCTIONS. ALL CONNECTIONS MUST BE CHECKED FOR PROPER TORQUE. REFER TO BATTERY LABEL FOR TORQUE VALUES.



WIRING DIAGRAM



BOTTOM VIEW

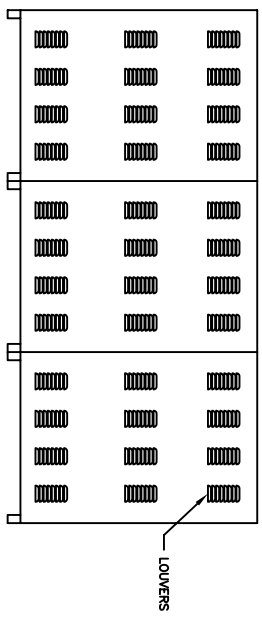


TERMINAL CONNECTIONS

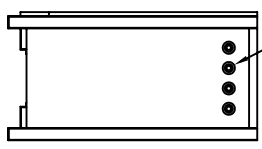
TERMINAL CONNECTION	TERMINAL CONNECTION	TERMINAL CONNECTION
NEGATIVE (-) TERMINAL	POSITIVE (+) TERMINAL	GROUNDING POINT
BATTERY LABEL	CABLE	

* USE (2) 1/4" BORE NUTS ON EACH END OF EACH CABLE AND BOND TO THE POSITIVE (+) TERMINAL AND THE NEGATIVE (-) TERMINAL OF THE BATTERY. ALL CONNECTIONS MUST BE MADE ACCORDING TO THE BATTERY LABEL. ALL CONNECTIONS MUST BE MADE ACCORDING TO THE BATTERY LABEL.

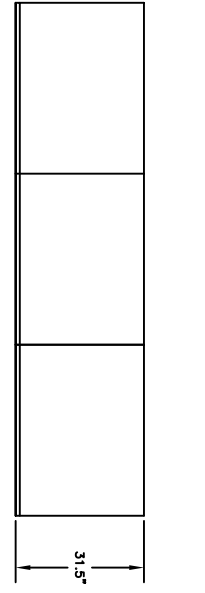
TRIPLE KNOCKOUTS 1 1/2" TYP (4) PLACES BOTH SIDE



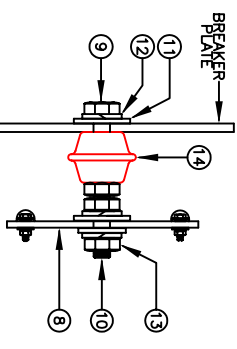
BACK VIEW



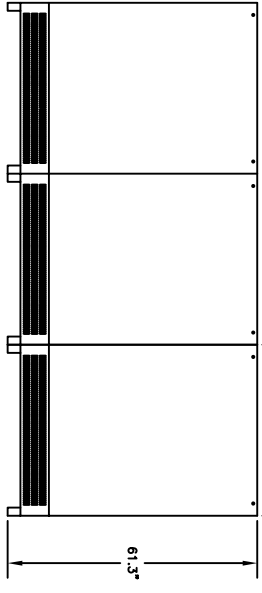
SIDE VIEW



TOP VIEW



DETAIL B
 BUSBAR ASSEMBLY



FRONT VIEW

NOTE: CABLES SIZED TO RESTRICT A VOLTAGE DROP OVER 2%

NO.	DESCRIPTION	QTY	PART NO.
1	BATTERY RAIL INSULATION	36	86-0014
2	TERMINAL BOOT (480V/125) NEG	9	86-0015
3	TERMINAL BOOT (480V/125) POS	9	86-0016
4	TERMINAL BOOT (480V/125) GND	9	86-0017
5	TERMINAL BOOT (480V/125) NEG	9	86-0018
6	TERMINAL BOOT (480V/125) POS	9	86-0019
7	TERMINAL BOOT (480V/125) GND	9	86-0020
8	TERMINAL BOOT (480V/125) NEG	9	86-0021
9	TERMINAL BOOT (480V/125) POS	9	86-0022
10	TERMINAL BOOT (480V/125) GND	9	86-0023
11	TERMINAL BOOT (480V/125) NEG	9	86-0024
12	TERMINAL BOOT (480V/125) POS	9	86-0025
13	TERMINAL BOOT (480V/125) GND	9	86-0026
14	TERMINAL BOOT (480V/125) NEG	9	86-0027
15	TERMINAL BOOT (480V/125) POS	9	86-0028
16	TERMINAL BOOT (480V/125) GND	9	86-0029
17	TERMINAL BOOT (480V/125) NEG	9	86-0030
18	TERMINAL BOOT (480V/125) POS	9	86-0031
19	TERMINAL BOOT (480V/125) GND	9	86-0032
20	TERMINAL BOOT (480V/125) NEG	9	86-0033
21	TERMINAL BOOT (480V/125) POS	9	86-0034
22	TERMINAL BOOT (480V/125) GND	9	86-0035
23	TERMINAL BOOT (480V/125) NEG	9	86-0036
24	TERMINAL BOOT (480V/125) POS	9	86-0037
25	TERMINAL BOOT (480V/125) GND	9	86-0038
26	TERMINAL BOOT (480V/125) NEG	9	86-0039
27	TERMINAL BOOT (480V/125) POS	9	86-0040
28	TERMINAL BOOT (480V/125) GND	9	86-0041
29	TERMINAL BOOT (480V/125) NEG	9	86-0042
30	TERMINAL BOOT (480V/125) POS	9	86-0043
31	TERMINAL BOOT (480V/125) GND	9	86-0044
32	TERMINAL BOOT (480V/125) NEG	9	86-0045
33	TERMINAL BOOT (480V/125) POS	9	86-0046
34	TERMINAL BOOT (480V/125) GND	9	86-0047
35	TERMINAL BOOT (480V/125) NEG	9	86-0048
36	TERMINAL BOOT (480V/125) POS	9	86-0049
37	TERMINAL BOOT (480V/125) GND	9	86-0050
38	TERMINAL BOOT (480V/125) NEG	9	86-0051
39	TERMINAL BOOT (480V/125) POS	9	86-0052
40	TERMINAL BOOT (480V/125) GND	9	86-0053
41	TERMINAL BOOT (480V/125) NEG	9	86-0054
42	TERMINAL BOOT (480V/125) POS	9	86-0055
43	TERMINAL BOOT (480V/125) GND	9	86-0056
44	TERMINAL BOOT (480V/125) NEG	9	86-0057
45	TERMINAL BOOT (480V/125) POS	9	86-0058
46	TERMINAL BOOT (480V/125) GND	9	86-0059
47	TERMINAL BOOT (480V/125) NEG	9	86-0060
48	TERMINAL BOOT (480V/125) POS	9	86-0061
49	TERMINAL BOOT (480V/125) GND	9	86-0062
50	TERMINAL BOOT (480V/125) NEG	9	86-0063
51	TERMINAL BOOT (480V/125) POS	9	86-0064
52	TERMINAL BOOT (480V/125) GND	9	86-0065
53	TERMINAL BOOT (480V/125) NEG	9	86-0066
54	TERMINAL BOOT (480V/125) POS	9	86-0067
55	TERMINAL BOOT (480V/125) GND	9	86-0068
56	TERMINAL BOOT (480V/125) NEG	9	86-0069
57	TERMINAL BOOT (480V/125) POS	9	86-0070
58	TERMINAL BOOT (480V/125) GND	9	86-0071
59	TERMINAL BOOT (480V/125) NEG	9	86-0072
60	TERMINAL BOOT (480V/125) POS	9	86-0073
61	TERMINAL BOOT (480V/125) GND	9	86-0074
62	TERMINAL BOOT (480V/125) NEG	9	86-0075
63	TERMINAL BOOT (480V/125) POS	9	86-0076
64	TERMINAL BOOT (480V/125) GND	9	86-0077
65	TERMINAL BOOT (480V/125) NEG	9	86-0078
66	TERMINAL BOOT (480V/125) POS	9	86-0079
67	TERMINAL BOOT (480V/125) GND	9	86-0080
68	TERMINAL BOOT (480V/125) NEG	9	86-0081
69	TERMINAL BOOT (480V/125) POS	9	86-0082
70	TERMINAL BOOT (480V/125) GND	9	86-0083
71	TERMINAL BOOT (480V/125) NEG	9	86-0084
72	TERMINAL BOOT (480V/125) POS	9	86-0085
73	TERMINAL BOOT (480V/125) GND	9	86-0086
74	TERMINAL BOOT (480V/125) NEG	9	86-0087
75	TERMINAL BOOT (480V/125) POS	9	86-0088
76	TERMINAL BOOT (480V/125) GND	9	86-0089
77	TERMINAL BOOT (480V/125) NEG	9	86-0090
78	TERMINAL BOOT (480V/125) POS	9	86-0091
79	TERMINAL BOOT (480V/125) GND	9	86-0092
80	TERMINAL BOOT (480V/125) NEG	9	86-0093
81	TERMINAL BOOT (480V/125) POS	9	86-0094
82	TERMINAL BOOT (480V/125) GND	9	86-0095
83	TERMINAL BOOT (480V/125) NEG	9	86-0096
84	TERMINAL BOOT (480V/125) POS	9	86-0097
85	TERMINAL BOOT (480V/125) GND	9	86-0098
86	TERMINAL BOOT (480V/125) NEG	9	86-0099
87	TERMINAL BOOT (480V/125) POS	9	86-0100
88	TERMINAL BOOT (480V/125) GND	9	86-0101
89	TERMINAL BOOT (480V/125) NEG	9	86-0102
90	TERMINAL BOOT (480V/125) POS	9	86-0103
91	TERMINAL BOOT (480V/125) GND	9	86-0104
92	TERMINAL BOOT (480V/125) NEG	9	86-0105
93	TERMINAL BOOT (480V/125) POS	9	86-0106
94	TERMINAL BOOT (480V/125) GND	9	86-0107
95	TERMINAL BOOT (480V/125) NEG	9	86-0108
96	TERMINAL BOOT (480V/125) POS	9	86-0109
97	TERMINAL BOOT (480V/125) GND	9	86-0110
98	TERMINAL BOOT (480V/125) NEG	9	86-0111
99	TERMINAL BOOT (480V/125) POS	9	86-0112
100	TERMINAL BOOT (480V/125) GND	9	86-0113
101	TERMINAL BOOT (480V/125) NEG	9	86-0114
102	TERMINAL BOOT (480V/125) POS	9	86-0115
103	TERMINAL BOOT (480V/125) GND	9	86-0116
104	TERMINAL BOOT (480V/125) NEG	9	86-0117
105	TERMINAL BOOT (480V/125) POS	9	86-0118
106	TERMINAL BOOT (480V/125) GND	9	86-0119
107	TERMINAL BOOT (480V/125) NEG	9	86-0120
108	TERMINAL BOOT (480V/125) POS	9	86-0121
109	TERMINAL BOOT (480V/125) GND	9	86-0122
110	TERMINAL BOOT (480V/125) NEG	9	86-0123
111	TERMINAL BOOT (480V/125) POS	9	86-0124
112	TERMINAL BOOT (480V/125) GND	9	86-0125
113	TERMINAL BOOT (480V/125) NEG	9	86-0126
114	TERMINAL BOOT (480V/125) POS	9	86-0127
115	TERMINAL BOOT (480V/125) GND	9	86-0128
116	TERMINAL BOOT (480V/125) NEG	9	86-0129
117	TERMINAL BOOT (480V/125) POS	9	86-0130
118	TERMINAL BOOT (480V/125) GND	9	86-0131
119	TERMINAL BOOT (480V/125) NEG	9	86-0132
120	TERMINAL BOOT (480V/125) POS	9	86-0133
121	TERMINAL BOOT (480V/125) GND	9	86-0134
122	TERMINAL BOOT (480V/125) NEG	9	86-0135
123	TERMINAL BOOT (480V/125) POS	9	86-0136
124	TERMINAL BOOT (480V/125) GND	9	86-0137
125	TERMINAL BOOT (480V/125) NEG	9	86-0138
126	TERMINAL BOOT (480V/125) POS	9	86-0139
127	TERMINAL BOOT (480V/125) GND	9	86-0140
128	TERMINAL BOOT (480V/125) NEG	9	86-0141
129	TERMINAL BOOT (480V/125) POS	9	86-0142
130	TERMINAL BOOT (480V/125) GND	9	86-0143
131	TERMINAL BOOT (480V/125) NEG	9	86-0144
132	TERMINAL BOOT (480V/125) POS	9	86-0145
133	TERMINAL BOOT (480V/125) GND	9	86-0146
134	TERMINAL BOOT (480V/125) NEG	9	86-0147
135	TERMINAL BOOT (480V/125) POS	9	86-0148
136	TERMINAL BOOT (480V/125) GND	9	86-0149
137	TERMINAL BOOT (480V/125) NEG	9	86-0150
138	TERMINAL BOOT (480V/125) POS	9	86-0151
139	TERMINAL BOOT (480V/125) GND	9	86-0152
140	TERMINAL BOOT (480V/125) NEG	9	86-0153
141	TERMINAL BOOT (480V/125) POS	9	86-0154
142	TERMINAL BOOT (480V/125) GND	9	86-0155
143	TERMINAL BOOT (480V/125) NEG	9	86-0156
144	TERMINAL BOOT (480V/125) POS	9	86-0157
145	TERMINAL BOOT (480V/125) GND	9	86-0158
146	TERMINAL BOOT (480V/125) NEG	9	86-0159
147	TERMINAL BOOT (480V/125) POS	9	86-0160
148	TERMINAL BOOT (480V/125) GND	9	86-0161
149	TERMINAL BOOT (480V/125) NEG	9	86-0162
150	TERMINAL BOOT (480V/125) POS	9	86-0163
151	TERMINAL BOOT (480V/125) GND	9	86-0164
152	TERMINAL BOOT (480V/125) NEG	9	86-0165
153	TERMINAL BOOT (480V/125) POS	9	86-0166
154	TERMINAL BOOT (480V/125) GND	9	86-0167
155	TERMINAL BOOT (480V/125) NEG	9	86-0168
156	TERMINAL BOOT (480V/125) POS	9	86-0169
157	TERMINAL BOOT (480V/125) GND	9	86-0170
158	TERMINAL BOOT (480V/125) NEG	9	86-0171
159	TERMINAL BOOT (480V/125) POS	9	86-0172
160	TERMINAL BOOT (480V/125) GND	9	86-0173
161	TERMINAL BOOT (480V/125) NEG	9	86-0174
162	TERMINAL BOOT (480V/125) POS	9	86-0175
163	TERMINAL BOOT (480V/125) GND	9	86-0176
164	TERMINAL BOOT (480V/125) NEG	9	86-0177
165	TERMINAL BOOT (480V/125) POS	9	86-0178
166	TERMINAL BOOT (480V/125) GND	9	86-0179
167	TERMINAL BOOT (480V/125) NEG	9	86-0180
168	TERMINAL BOOT (480V/125) POS	9	86-0181
169	TERMINAL BOOT (480V/125) GND	9	86-0182
170	TERMINAL BOOT (480V/125) NEG	9	86-0183
171	TERMINAL BOOT (480V/125) POS	9	86-0184
172	TERMINAL BOOT (480V/125) GND	9	86-0185
173	TERMINAL BOOT (480V/125) NEG	9	86-0186
174	TERMINAL BOOT (480V/125) POS	9	86-0187
175	TERMINAL BOOT (480V/125) GND	9	86-0188
176	TERMINAL BOOT (480V/125) NEG	9	86-0189
177	TERMINAL BOOT (480V/125) POS	9	86-0190
178	TERMINAL BOOT (480V/125) GND	9	86