

# SYSTEM SPECIFICATIONS

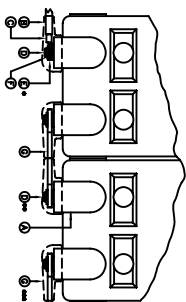
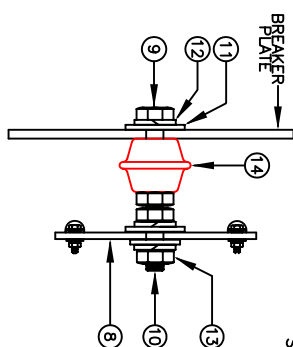
SYSTEM MODEL NO. CZS-481785  
 SYSTEM RATING: 175 AMPS FOR 8 HOURS TO 1.75 VPC.  
 RECOMMENDED SYSTEM FLOAT VOLTAGE: 54.48 MIN. 55.2 MAX.  
 SYSTEM CUTOFF VOLTAGE: 42  
 FULL LOAD CURRENT: 175 ADC  
 FULL LOAD CURRENT PER SERIES CIRCUIT: 25 ADC  
 OPEN CIRCUIT VOLTAGE: 49.6 - 51.6 VDC

NOTE: SYSTEM IS SIZED TO ACCOMMODATE A 250 AMP SPIKE

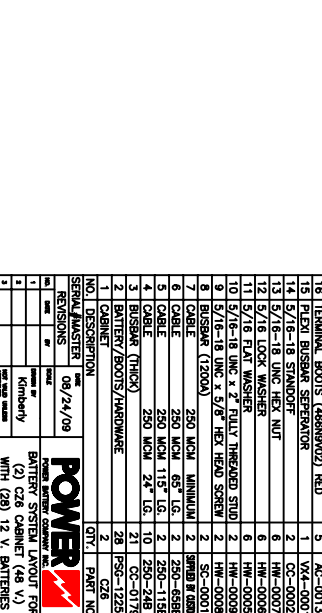
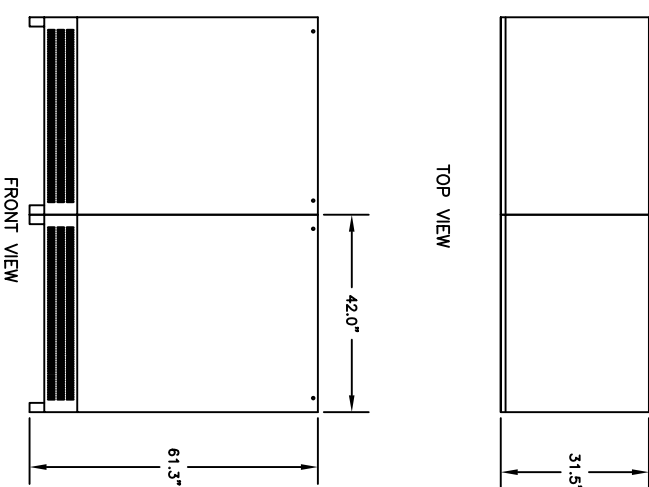
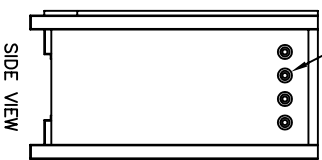
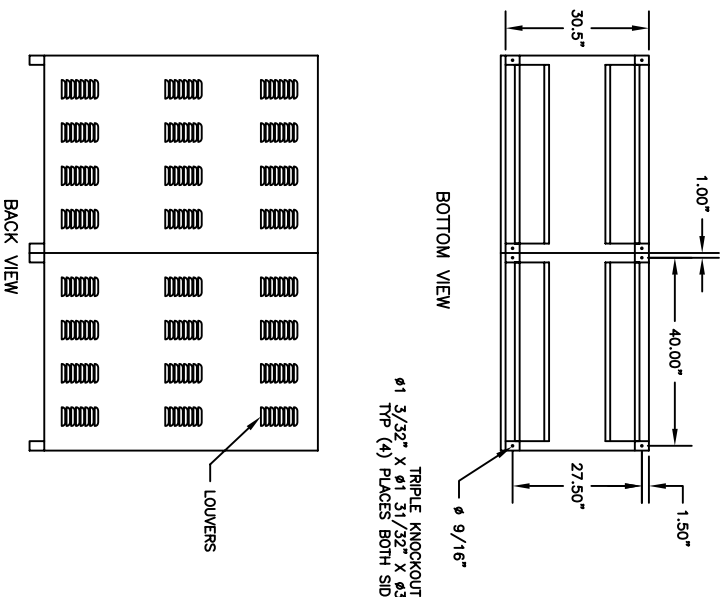
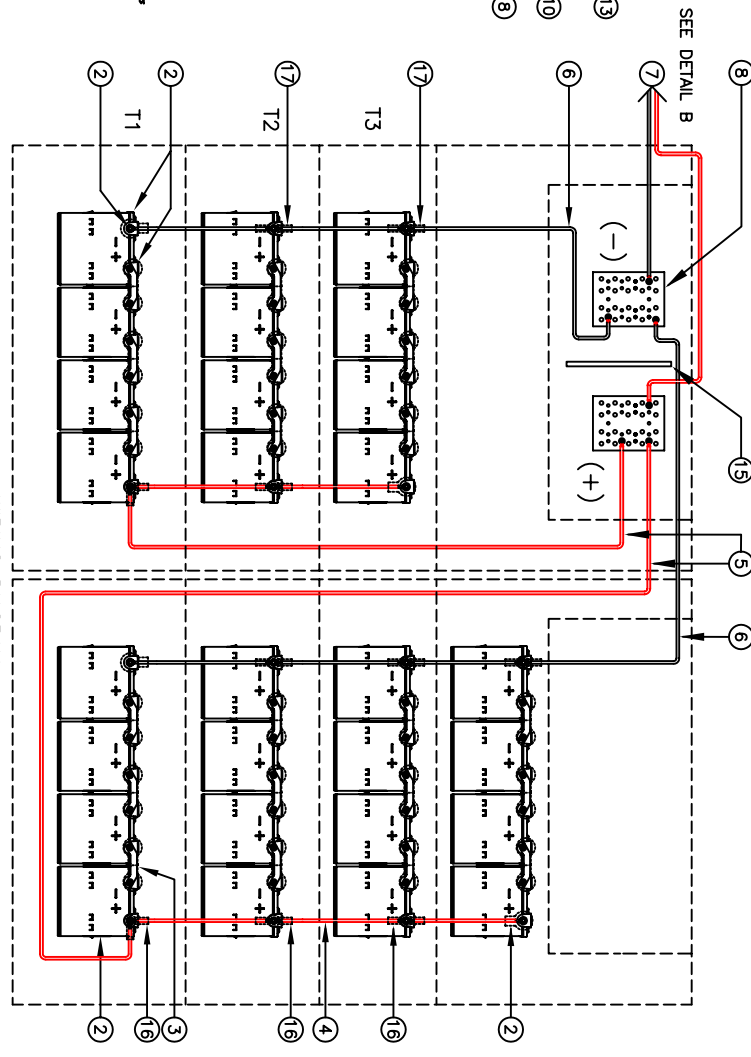
- 1 ALL RECOMMENDED CUSTOMER'S CABLE GAUGES ARE BASED ON TABLE 310-16 OF N.E.C. USING 75C CABLE IN 30C AMBIENT. ASSUMING CABINETS ARE FLUSH TO ONE ANOTHER INTERCABINET CABLING IS BASED ON TABLE 310-17 OF N.E.C USING 90C CABLE IN 30C AMBIENT.
- 2 ANY DEVIATION FROM THIS CONFIGURATION REQUIRES THE CUSTOMER TO SIZE INTERCABINET CABLES RECOMMENDED BY N.E.C. TABLE 310-16 USING 75C IN 30C AMBIENT.
- 3 SEE BATTERY LABEL FOR TORQUE VALUES
- 4 USE INSULATED TOOLS FOR CABINET INSTALLATION. DO NOT ALLOW TOOLS OR CABLES TO REST ON BATTERIES.

PARALLEL CONNECTOR:  
 WIRE SIZE WILL BE SPECIFIED AS PER GAUGE (MINIMUM) TO BE USED. LENGTHS OF CABLE TO JUNCTION BOX SHOULD BE MADE SO THAT THE TOTAL LENGTH OF CABLES PER STRING IS EQUAL. THIS WILL MINIMIZE VARIATIONS OF RESISTANCE IN EACH STRING. HENCE EQUALLY DISTRIBUTE LOAD CURRENTS.

NOTE:  
 \* ALTERNATE METHOD MAY BE USED TO CONNECT TWO SYSTEMS ACCORDING TO CUSTOMER SPECIFICATIONS.



NO.	DESCRIPTION	QTY.
1	FLAT WASHER	1
2	FLAT WASHER	1
3	FLAT WASHER	1
4	FLAT WASHER	1
5	FLAT WASHER	1
6	FLAT WASHER	1
7	FLAT WASHER	1
8	FLAT WASHER	1
9	FLAT WASHER	1
10	FLAT WASHER	1
11	FLAT WASHER	1
12	FLAT WASHER	1
13	FLAT WASHER	1
14	FLAT WASHER	1
15	FLAT WASHER	1
16	FLAT WASHER	1
17	FLAT WASHER	1
18	FLAT WASHER	1
19	FLAT WASHER	1
20	FLAT WASHER	1
21	FLAT WASHER	1
22	FLAT WASHER	1
23	FLAT WASHER	1
24	FLAT WASHER	1
25	FLAT WASHER	1
26	FLAT WASHER	1
27	FLAT WASHER	1
28	FLAT WASHER	1
29	FLAT WASHER	1
30	FLAT WASHER	1
31	FLAT WASHER	1
32	FLAT WASHER	1
33	FLAT WASHER	1
34	FLAT WASHER	1
35	FLAT WASHER	1
36	FLAT WASHER	1
37	FLAT WASHER	1
38	FLAT WASHER	1
39	FLAT WASHER	1
40	FLAT WASHER	1
41	FLAT WASHER	1
42	FLAT WASHER	1
43	FLAT WASHER	1
44	FLAT WASHER	1
45	FLAT WASHER	1
46	FLAT WASHER	1
47	FLAT WASHER	1
48	FLAT WASHER	1
49	FLAT WASHER	1
50	FLAT WASHER	1
51	FLAT WASHER	1
52	FLAT WASHER	1
53	FLAT WASHER	1
54	FLAT WASHER	1
55	FLAT WASHER	1
56	FLAT WASHER	1
57	FLAT WASHER	1
58	FLAT WASHER	1
59	FLAT WASHER	1
60	FLAT WASHER	1
61	FLAT WASHER	1
62	FLAT WASHER	1
63	FLAT WASHER	1
64	FLAT WASHER	1
65	FLAT WASHER	1
66	FLAT WASHER	1
67	FLAT WASHER	1
68	FLAT WASHER	1
69	FLAT WASHER	1
70	FLAT WASHER	1
71	FLAT WASHER	1
72	FLAT WASHER	1
73	FLAT WASHER	1
74	FLAT WASHER	1
75	FLAT WASHER	1
76	FLAT WASHER	1
77	FLAT WASHER	1
78	FLAT WASHER	1
79	FLAT WASHER	1
80	FLAT WASHER	1
81	FLAT WASHER	1
82	FLAT WASHER	1
83	FLAT WASHER	1
84	FLAT WASHER	1
85	FLAT WASHER	1
86	FLAT WASHER	1
87	FLAT WASHER	1
88	FLAT WASHER	1
89	FLAT WASHER	1
90	FLAT WASHER	1
91	FLAT WASHER	1
92	FLAT WASHER	1
93	FLAT WASHER	1
94	FLAT WASHER	1
95	FLAT WASHER	1
96	FLAT WASHER	1
97	FLAT WASHER	1
98	FLAT WASHER	1
99	FLAT WASHER	1
100	FLAT WASHER	1



**IMPORTANT NOTES**  
 THE CUSTOMER AND/OR CONTRACTOR SHALL BE RESPONSIBLE FOR INSTALLING THIS EQUIPMENT IN ACCORDANCE WITH ALL APPLICABLE CODES AND REGULATIONS  
 WHEN HANDLING, KEEP UPRIGHT WITHIN +/- 15 DEGREES.  
 PLEASE REFER TO 2008 NEC SECTION 480-9 FOR THE REQUIREMENTS ON WORKING SPACES.

**IMPORTANT NOTE**  
 ALL CONNECTIONS TO BE RECHECKED ANNUALLY.  
 ALL CONNECTIONS MUST BE CHECKED FOR PROPER TORQUE PRIOR TO START UP OR ENERGIZING OF SYSTEM.

NOTE: CABLES SIZED TO RESTRICT A VOLTAGE DROP OVER 2%

NO.	DESCRIPTION	QTY.	PART NO.
1	BATTERY RAIL INSULATION	21	AC-0014
2	TERMINAL BOOTS (4889V14) BLACK	5	AC-0013
3	TERMINAL BOOTS (4889V02) RED	5	AC-0013
4	FLAT WASHER	1	VA-0001
5	FLAT WASHER	1	VA-0002
6	5/16-18 UNC HEX NUT	6	HW-0006
7	5/16-18 UNC LOCK WASHER	6	HW-0005
8	5/16-18 UNC X 2" FULLY THREADED STUD	2	HW-0009
9	5/16-18 UNC X 3/8" HEX HEAD SCREW	2	SC-0001
10	CABLE	250 MCM MINIMUM	SEE BATTERY LABEL
11	CABLE	250 MCM 115' LG.	250-115E
12	CABLE	250 MCM 115' LG.	250-115E
13	BUSBAR (THICK)	250 MCM 24' LG.	CS-4179
14	BATTERY/BOOTS/HARDWARE	28	PS6-12255
15	CABINET	2	CS6
16	NO. DESCRIPTION		
17	SERIAL MASTER		
18	REV.		
19	DATE		
20	BY		
21	APPROVED		
22	DESIGNED BY		
23	CHECKED BY		
24	DATE		
25	SCALE		
26	PROJECT NO.		
27	DRAWING NO.		
28	REV.		
29	DATE		
30	BY		
31	APPROVED		
32	DESIGNED BY		
33	CHECKED BY		
34	DATE		
35	SCALE		
36	PROJECT NO.		
37	DRAWING NO.		
38	REV.		
39	DATE		
40	BY		
41	APPROVED		
42	DESIGNED BY		
43	CHECKED BY		
44	DATE		
45	SCALE		
46	PROJECT NO.		
47	DRAWING NO.		
48	REV.		
49	DATE		
50	BY		
51	APPROVED		
52	DESIGNED BY		
53	CHECKED BY		
54	DATE		
55	SCALE		
56	PROJECT NO.		
57	DRAWING NO.		
58	REV.		
59	DATE		
60	BY		
61	APPROVED		
62	DESIGNED BY		
63	CHECKED BY		
64	DATE		
65	SCALE		
66	PROJECT NO.		
67	DRAWING NO.		
68	REV.		
69	DATE		
70	BY		
71	APPROVED		
72	DESIGNED BY		
73	CHECKED BY		
74	DATE		
75	SCALE		
76	PROJECT NO.		
77	DRAWING NO.		
78	REV.		
79	DATE		
80	BY		
81	APPROVED		
82	DESIGNED BY		
83	CHECKED BY		
84	DATE		
85	SCALE		
86	PROJECT NO.		
87	DRAWING NO.		
88	REV.		
89	DATE		
90	BY		
91	APPROVED		
92	DESIGNED BY		
93	CHECKED BY		
94	DATE		
95	SCALE		
96	PROJECT NO.		
97	DRAWING NO.		
98	REV.		
99	DATE		
100	BY		

