

SYSTEM SPECIFICATIONS

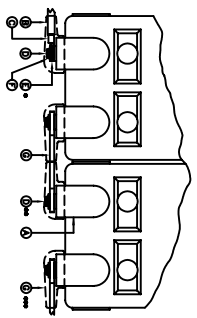
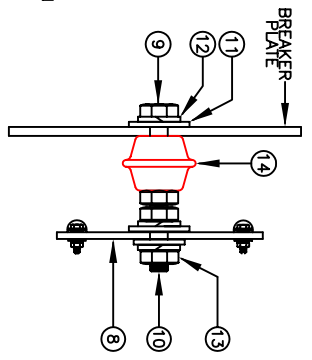
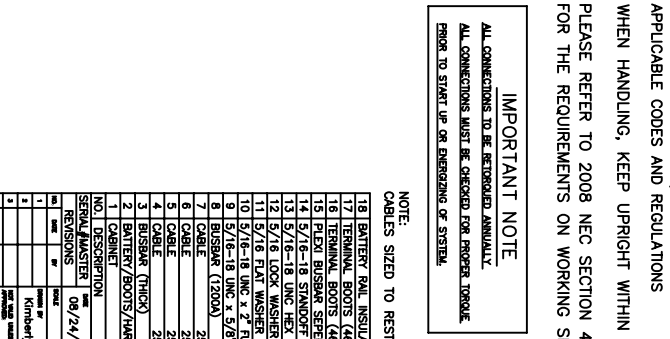
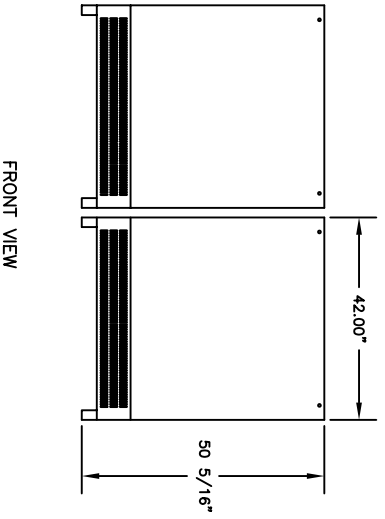
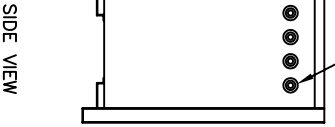
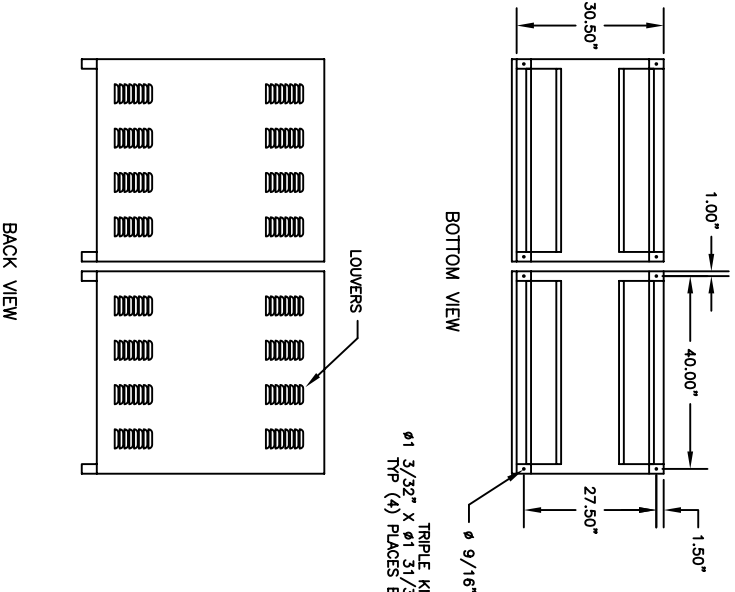
SYSTEM MODEL NO. CZS-481530
 SYSTEM RATING: 150 AMPS FOR 8 HOURS TO 1.75 VPC.
 RECOMMENDED SYSTEM FLOAT VOLTAGE: 54.48 MIN. 55.2 MAX.
 SYSTEM CUTOFF VOLTAGE: 42
 FULL LOAD CURRENT: 150 ADC
 FULL LOAD CURRENT PER SERIES CIRCUIT: 25 ADC
 OPEN CIRCUIT VOLTAGE: 49.6 - 51.6 VDC

NOTE: SYSTEM IS SIZED TO ACCOMMODATE A 250 AMP SPIKE

- 1 ALL RECOMMENDED CUSTOMER'S CABLE GAUGES ARE BASED ON TABLE 310-16 OF N.E.C. USING 75°C CABLE IN 30°C AMBIENT. ASSUMING CABINETS ARE FLUSH TO ONE ANOTHER INTERCABINET CABLING IS BASED ON TABLE 310-17 OF N.E.C USING 90°C CABLE IN 30°C AMBIENT.
- 2 ANY DEVIATION FROM THIS CONFIGURATION REQUIRES THE CUSTOMER TO SIDE INTERCABINET CABLES RECOMMENDED BY N.E.C. TABLE 310-16 USING 75°C IN 30°C AMBIENT.
- 3 SEE BATTERY LABEL FOR TORQUE VALUES
- 4 USE INSULATED TOOLS FOR CABINET INSTALLATION. DO NOT ALLOW TOOLS OR CABLES TO REST ON BATTERIES.

PARALLEL CONNECTOR:
 WIRE SIZE WILL BE SPECIFIED AS PER GAUGE (MINIMUM) TO BE USED. LENGTHS OF CABLE TO JUNCTION BOX SHOULD BE MADE SO THAT THE TOTAL LENGTH OF CABLES PER STRING IS EQUAL. THIS WILL MINIMIZE VARIATIONS OF RESISTANCE IN EACH STRING. HENCE EQUALLY DISTRIBUTE LOAD CURRENTS.

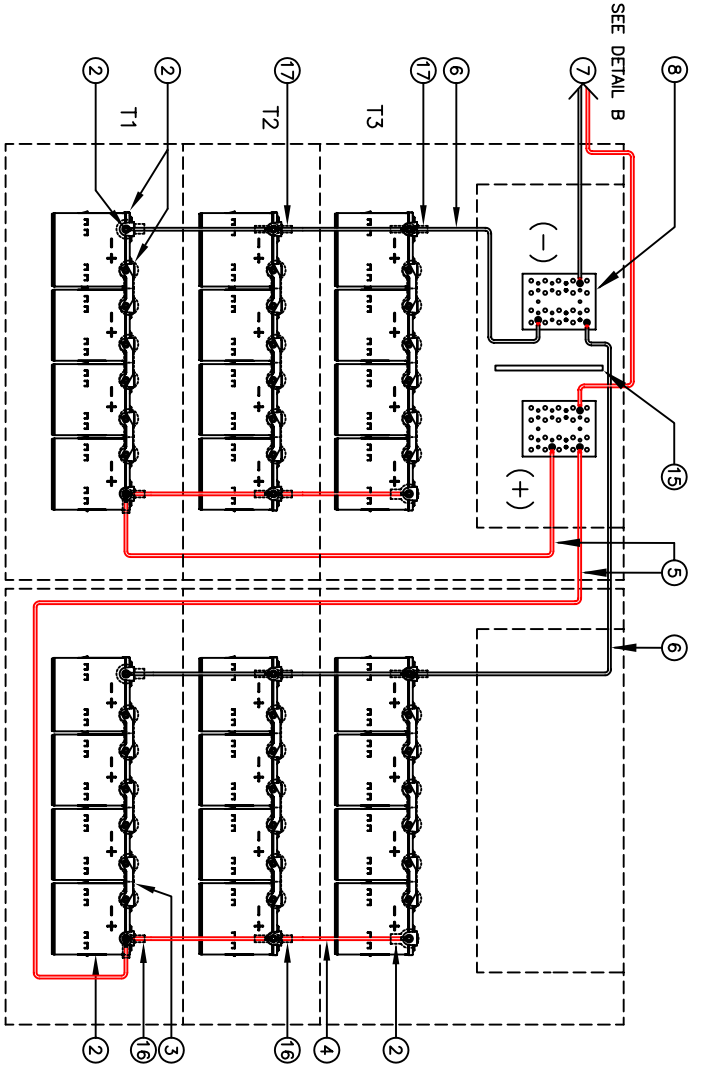
NOTE:
 * ALTERNATE METHOD MAY BE USED TO CONNECT TWO SYSTEMS ACCORDING TO CUSTOMER SPECIFICATIONS.



TERMINAL CONNECTION

TERMINAL	WIRE GAUGE	TERMINAL CONNECTION
1	10	10-18 UNF X 3/8" HEX HEAD SCREW
2	10	10-18 UNF X 3/8" HEX HEAD SCREW
3	10	10-18 UNF X 3/8" HEX HEAD SCREW
4	10	10-18 UNF X 3/8" HEX HEAD SCREW
5	10	10-18 UNF X 3/8" HEX HEAD SCREW
6	10	10-18 UNF X 3/8" HEX HEAD SCREW
7	10	10-18 UNF X 3/8" HEX HEAD SCREW
8	10	10-18 UNF X 3/8" HEX HEAD SCREW
9	10	10-18 UNF X 3/8" HEX HEAD SCREW
10	10	10-18 UNF X 3/8" HEX HEAD SCREW
11	10	10-18 UNF X 3/8" HEX HEAD SCREW
12	10	10-18 UNF X 3/8" HEX HEAD SCREW
13	10	10-18 UNF X 3/8" HEX HEAD SCREW
14	10	10-18 UNF X 3/8" HEX HEAD SCREW
15	10	10-18 UNF X 3/8" HEX HEAD SCREW
16	10	10-18 UNF X 3/8" HEX HEAD SCREW
17	10	10-18 UNF X 3/8" HEX HEAD SCREW
18	10	10-18 UNF X 3/8" HEX HEAD SCREW

* USE (2) FLAT WASHER WHEN COILS ARE BEING USED
 * USE (1) FLAT WASHER WHEN A BUS BAR IS BEING USED
 * BUS BAR COVER SHALL BE USED IN EACH CONNECTION
 * MAKE ALL CONNECTIONS WITH THE FOLLOWING TORQUE
 AVAILABLE TO 119 11-18-18



IMPORTANT NOTES
 THE CUSTOMER AND/OR CONTRACTOR SHALL BE RESPONSIBLE FOR INSTALLING THIS EQUIPMENT IN ACCORDANCE WITH ALL APPLICABLE CODES AND REGULATIONS
 WHEN HANDLING, KEEP UPRIGHT WITHIN +/- 15 DEGREES.
 PLEASE REFER TO 2008 NEC SECTION 480-9 FOR THE REQUIREMENTS ON WORKING SPACES.

IMPORTANT NOTE
 ALL CONNECTIONS TO BE RETORQUED ANNUALLY.
 ALL CONNECTIONS MUST BE CHECKED FOR PROPER TORQUE PRIOR TO START UP OR REENGINEERING OF SYSTEM.

NOTE:
 CABLES SIZED TO RESTRICT A VOLTAGE DROP OVER 2%

NO.	DESCRIPTION	QTY.	PART NO.
1	BATTERY BULK INSULATION	18	
2	TERMINAL BOOT (486N9V02) BLACK	4	AC-0014
3	TERMINAL BOOT (486N9V02) RED	4	AC-0013
4	PLATE BUSBAR SEPARATOR	1	VX-0001
5	5/16-18 STANDOFF	2	CC-0002
6	5/16-18 UNC HEX NUT	6	NH-0007
7	5/16-18 LOCK WASHER	6	NH-0006
8	5/16-18 FLAT WASHER	6	NH-0005
9	5/16-18 UNC X 2" RALLY THREADED STUD	2	NH-0008
10	5/16-18 UNC X 5/8" HEX HEAD SCREW	2	NH-0009
11	5/16-18 UNC X 5/8" HEX HEAD SCREW	2	NH-0008
12	5/16-18 UNC X 5/8" HEX HEAD SCREW	2	NH-0009
13	5/16-18 UNC X 5/8" HEX HEAD SCREW	2	NH-0008
14	5/16-18 UNC X 5/8" HEX HEAD SCREW	2	NH-0009
15	5/16-18 UNC X 5/8" HEX HEAD SCREW	2	NH-0008
16	5/16-18 UNC X 5/8" HEX HEAD SCREW	2	NH-0009
17	5/16-18 UNC X 5/8" HEX HEAD SCREW	2	NH-0008
18	5/16-18 UNC X 5/8" HEX HEAD SCREW	2	NH-0009
19	CABLE	2	250-458E
20	CABLE	2	250-458E
21	CABLE	2	250-458E
22	CABLE	2	250-458E
23	CABLE	2	250-458E
24	CABLE	2	250-458E
25	CABLE	2	250-458E
26	CABLE	2	250-458E
27	CABLE	2	250-458E
28	CABLE	2	250-458E
29	CABLE	2	250-458E
30	CABLE	2	250-458E
31	CABLE	2	250-458E
32	CABLE	2	250-458E
33	CABLE	2	250-458E
34	CABLE	2	250-458E
35	CABLE	2	250-458E
36	CABLE	2	250-458E
37	CABLE	2	250-458E
38	CABLE	2	250-458E
39	CABLE	2	250-458E
40	CABLE	2	250-458E
41	CABLE	2	250-458E
42	CABLE	2	250-458E
43	CABLE	2	250-458E
44	CABLE	2	250-458E
45	CABLE	2	250-458E
46	CABLE	2	250-458E
47	CABLE	2	250-458E
48	CABLE	2	250-458E
49	CABLE	2	250-458E
50	CABLE	2	250-458E
51	CABLE	2	250-458E
52	CABLE	2	250-458E
53	CABLE	2	250-458E
54	CABLE	2	250-458E
55	CABLE	2	250-458E
56	CABLE	2	250-458E
57	CABLE	2	250-458E
58	CABLE	2	250-458E
59	CABLE	2	250-458E
60	CABLE	2	250-458E
61	CABLE	2	250-458E
62	CABLE	2	250-458E
63	CABLE	2	250-458E
64	CABLE	2	250-458E
65	CABLE	2	250-458E
66	CABLE	2	250-458E
67	CABLE	2	250-458E
68	CABLE	2	250-458E
69	CABLE	2	250-458E
70	CABLE	2	250-458E
71	CABLE	2	250-458E
72	CABLE	2	250-458E
73	CABLE	2	250-458E
74	CABLE	2	250-458E
75	CABLE	2	250-458E
76	CABLE	2	250-458E
77	CABLE	2	250-458E
78	CABLE	2	250-458E
79	CABLE	2	250-458E
80	CABLE	2	250-458E
81	CABLE	2	250-458E
82	CABLE	2	250-458E
83	CABLE	2	250-458E
84	CABLE	2	250-458E
85	CABLE	2	250-458E
86	CABLE	2	250-458E
87	CABLE	2	250-458E
88	CABLE	2	250-458E
89	CABLE	2	250-458E
90	CABLE	2	250-458E
91	CABLE	2	250-458E
92	CABLE	2	250-458E
93	CABLE	2	250-458E
94	CABLE	2	250-458E
95	CABLE	2	250-458E
96	CABLE	2	250-458E
97	CABLE	2	250-458E
98	CABLE	2	250-458E
99	CABLE	2	250-458E
100	CABLE	2	250-458E

