

# SYSTEM SPECIFICATIONS

SYSTEM MODEL NO. G2S-481275  
 SYSTEM RATING: 125 AMPS FOR 8 HOURS TO 1.75 VPC.  
 RECOMMENDED SYSTEM FLOAT VOLTAGE: 54.48 MIN. 55.2 MAX.  
 SYSTEM CUTOFF VOLTAGE: 42  
 FULL LOAD CURRENT: 125 ADC  
 OPEN CIRCUIT VOLTAGE: 49.6 - 51.6 VDC

NOTE: SYSTEM IS SIZED TO ACCOMMODATE A 250 AMP SPIKE  
 (1) ALL RECOMMENDED CUSTOMER'S CABLE GAUGES ARE BASED ON TABLE 310-16 OF N.E.C. USING 75°C CABLE IN 30°C AMBIENT.

(2) SEE BATTERY LABEL FOR TORQUE VALUES

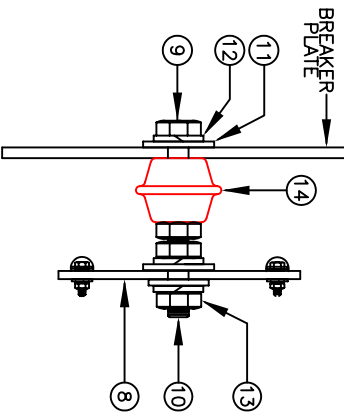
(4) USE INSULATED TOOLS FOR CABINET INSTALLATION. DO NOT ALLOW TOOLS TO REST ON BATTERIES.

### PARALLEL CONNECTOR:

WIRE SIZE WILL BE SPECIFIED AS PER GAUGE (MINIMUM) TO BE USED. LENGTHS OF CABLE TO JUNCTION BOX SHOULD BE MADE SO THAT THE TOTAL LENGTH OF CABLES PER STRING IS EQUAL. THIS WILL MINIMIZE VARIATIONS OF RESISTANCE IN EACH STRING. HENCE EQUALLY DISTRIBUTE LOAD CURRENTS.

### NOTE:

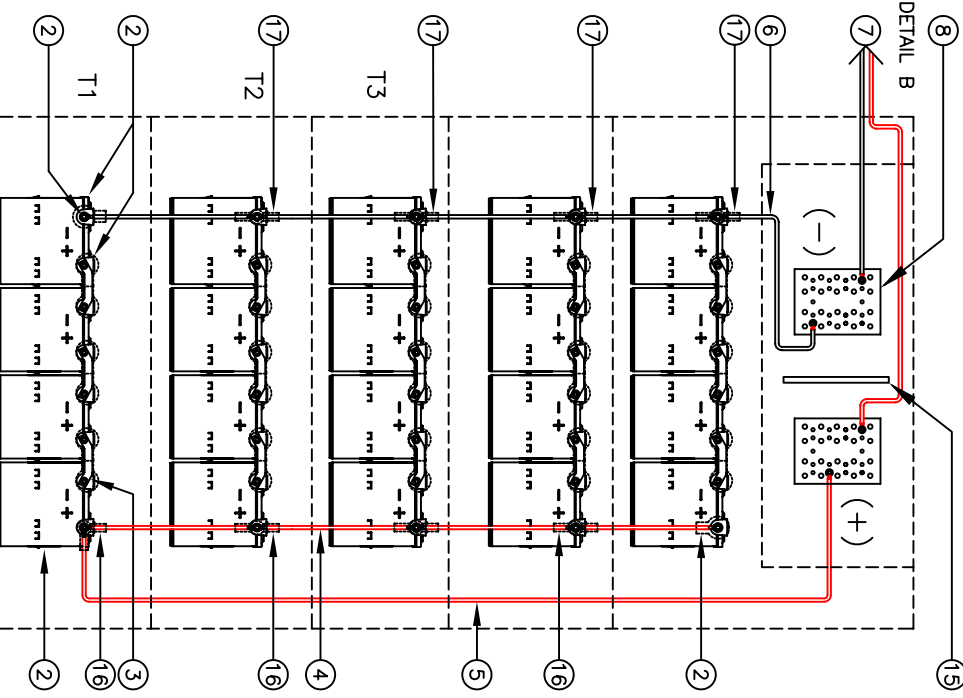
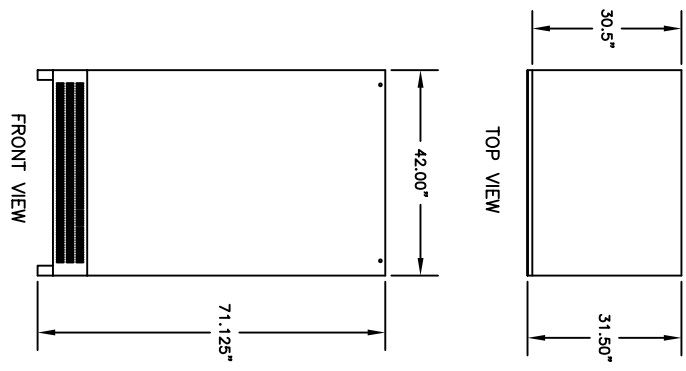
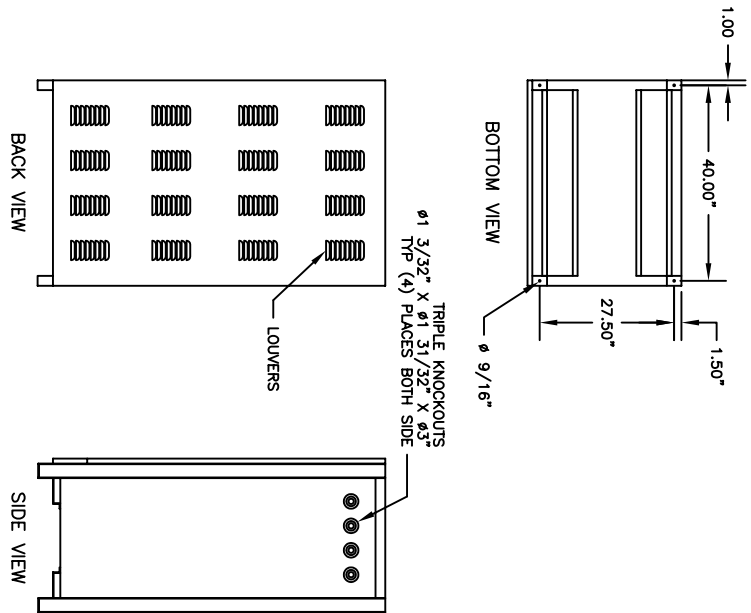
\* ALTERNATE METHOD MAY BE USED TO CONNECT TWO SYSTEMS ACCORDING TO CUSTOMER SPECIFICATIONS.



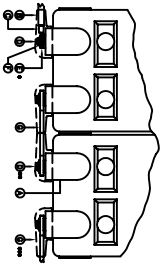
DETAIL B  
 BUSBAR ASSEMBLY

### IMPORTANT NOTES

THE CUSTOMER AND/OR CONTRACTOR SHALL BE RESPONSIBLE FOR INSTALLING THIS EQUIPMENT IN ACCORDANCE WITH ALL APPLICABLE CODES AND REGULATIONS  
 WHEN HANDLING, KEEP UPRIGHT WITHIN +/- 15 DEGREES.  
 PLEASE REFER TO 2008 NEC SECTION 480-9 FOR THE REQUIREMENTS ON WORKING SPACES.



WIRING DIAGRAM



ITEM NO.	DESCRIPTION	QTY.
1	1/4" X 3/32" X 1/4" X 31/32" X 1/8" X 5/16" TRIPLE KNOCKOUT	4
2	1/4" X 3/32" X 1/4" X 31/32" X 1/8" X 5/16" TRIPLE KNOCKOUT	4
3	1/4" X 3/32" X 1/4" X 31/32" X 1/8" X 5/16" TRIPLE KNOCKOUT	4
4	1/4" X 3/32" X 1/4" X 31/32" X 1/8" X 5/16" TRIPLE KNOCKOUT	4
5	1/4" X 3/32" X 1/4" X 31/32" X 1/8" X 5/16" TRIPLE KNOCKOUT	4
6	1/4" X 3/32" X 1/4" X 31/32" X 1/8" X 5/16" TRIPLE KNOCKOUT	4
7	1/4" X 3/32" X 1/4" X 31/32" X 1/8" X 5/16" TRIPLE KNOCKOUT	4
8	1/4" X 3/32" X 1/4" X 31/32" X 1/8" X 5/16" TRIPLE KNOCKOUT	4
9	1/4" X 3/32" X 1/4" X 31/32" X 1/8" X 5/16" TRIPLE KNOCKOUT	4
10	1/4" X 3/32" X 1/4" X 31/32" X 1/8" X 5/16" TRIPLE KNOCKOUT	4
11	1/4" X 3/32" X 1/4" X 31/32" X 1/8" X 5/16" TRIPLE KNOCKOUT	4
12	1/4" X 3/32" X 1/4" X 31/32" X 1/8" X 5/16" TRIPLE KNOCKOUT	4
13	1/4" X 3/32" X 1/4" X 31/32" X 1/8" X 5/16" TRIPLE KNOCKOUT	4
14	1/4" X 3/32" X 1/4" X 31/32" X 1/8" X 5/16" TRIPLE KNOCKOUT	4
15	1/4" X 3/32" X 1/4" X 31/32" X 1/8" X 5/16" TRIPLE KNOCKOUT	4
16	1/4" X 3/32" X 1/4" X 31/32" X 1/8" X 5/16" TRIPLE KNOCKOUT	4
17	1/4" X 3/32" X 1/4" X 31/32" X 1/8" X 5/16" TRIPLE KNOCKOUT	4
18	1/4" X 3/32" X 1/4" X 31/32" X 1/8" X 5/16" TRIPLE KNOCKOUT	4

\* USE (2) PAIR WRENCH WITH CABLE AND TIGHTEN TO 110 LB-FT.  
 \*\* USE (1) PAIR WRENCH WITH A 3/16" DIA. BAR IN ORDER TO TIGHTEN THE NUTS TO 110 LB-FT.  
 \*\*\* ALL CONNECTIONS MUST BE RETORQUED ANNUALLY TO 110 LB-FT.

### IMPORTANT NOTE

ALL CONNECTIONS TO BE RETORQUED ANNUALLY.  
 ALL CONNECTIONS MUST BE CHECKED FOR PROPER TORQUE PRIOR TO START UP OR EMERGING OF SYSTEM.

NOTE: CABLES SIZED TO RESTRICT A VOLTAGE DROP OVER 2%

NO.	DESCRIPTION	QTY.	REV.
1	BATTERY RAIL INSULATION	15	1
2	TERMINAL BOOT/BLACK (4689N1/4)	4	AC-001/4
3	TERMINAL BOOT/RED (4689N0/2)	4	AC-001/3
4	PLATE BUSBAR SEPARATOR	2	VA2-000/1
5	5/16" X 3/32" X 1/4" X 31/32" X 1/8" X 5/16" STAINLESS NUT	2	HW-000/2
6	5/16" X 3/32" X 1/4" X 31/32" X 1/8" X 5/16" FLAT WASHER	6	HW-000/6
7	5/16" X 3/32" X 1/4" X 31/32" X 1/8" X 5/16" FLAT WASHER	6	HW-000/5
8	5/16" X 3/32" X 1/4" X 31/32" X 1/8" X 5/16" FLAT WASHER	6	HW-000/6
9	5/16" X 3/32" X 1/4" X 31/32" X 1/8" X 5/16" FLAT WASHER	6	HW-000/5
10	5/16" X 3/32" X 1/4" X 31/32" X 1/8" X 5/16" FLAT WASHER	6	HW-000/6
11	5/16" X 3/32" X 1/4" X 31/32" X 1/8" X 5/16" FLAT WASHER	6	HW-000/5
12	5/16" X 3/32" X 1/4" X 31/32" X 1/8" X 5/16" FLAT WASHER	6	HW-000/6
13	5/16" X 3/32" X 1/4" X 31/32" X 1/8" X 5/16" FLAT WASHER	6	HW-000/5
14	5/16" X 3/32" X 1/4" X 31/32" X 1/8" X 5/16" FLAT WASHER	6	HW-000/6
15	5/16" X 3/32" X 1/4" X 31/32" X 1/8" X 5/16" FLAT WASHER	6	HW-000/5
16	5/16" X 3/32" X 1/4" X 31/32" X 1/8" X 5/16" FLAT WASHER	6	HW-000/6
17	5/16" X 3/32" X 1/4" X 31/32" X 1/8" X 5/16" FLAT WASHER	6	HW-000/5
18	5/16" X 3/32" X 1/4" X 31/32" X 1/8" X 5/16" FLAT WASHER	6	HW-000/6
19	5/16" X 3/32" X 1/4" X 31/32" X 1/8" X 5/16" FLAT WASHER	6	HW-000/5
20	5/16" X 3/32" X 1/4" X 31/32" X 1/8" X 5/16" FLAT WASHER	6	HW-000/6
21	5/16" X 3/32" X 1/4" X 31/32" X 1/8" X 5/16" FLAT WASHER	6	HW-000/5
22	5/16" X 3/32" X 1/4" X 31/32" X 1/8" X 5/16" FLAT WASHER	6	HW-000/6
23	5/16" X 3/32" X 1/4" X 31/32" X 1/8" X 5/16" FLAT WASHER	6	HW-000/5
24	5/16" X 3/32" X 1/4" X 31/32" X 1/8" X 5/16" FLAT WASHER	6	HW-000/6
25	5/16" X 3/32" X 1/4" X 31/32" X 1/8" X 5/16" FLAT WASHER	6	HW-000/5
26	5/16" X 3/32" X 1/4" X 31/32" X 1/8" X 5/16" FLAT WASHER	6	HW-000/6
27	5/16" X 3/32" X 1/4" X 31/32" X 1/8" X 5/16" FLAT WASHER	6	HW-000/5
28	5/16" X 3/32" X 1/4" X 31/32" X 1/8" X 5/16" FLAT WASHER	6	HW-000/6
29	5/16" X 3/32" X 1/4" X 31/32" X 1/8" X 5/16" FLAT WASHER	6	HW-000/5
30	5/16" X 3/32" X 1/4" X 31/32" X 1/8" X 5/16" FLAT WASHER	6	HW-000/6
31	5/16" X 3/32" X 1/4" X 31/32" X 1/8" X 5/16" FLAT WASHER	6	HW-000/5
32	5/16" X 3/32" X 1/4" X 31/32" X 1/8" X 5/16" FLAT WASHER	6	HW-000/6
33	5/16" X 3/32" X 1/4" X 31/32" X 1/8" X 5/16" FLAT WASHER	6	HW-000/5
34	5/16" X 3/32" X 1/4" X 31/32" X 1/8" X 5/16" FLAT WASHER	6	HW-000/6
35	5/16" X 3/32" X 1/4" X 31/32" X 1/8" X 5/16" FLAT WASHER	6	HW-000/5
36	5/16" X 3/32" X 1/4" X 31/32" X 1/8" X 5/16" FLAT WASHER	6	HW-000/6
37	5/16" X 3/32" X 1/4" X 31/32" X 1/8" X 5/16" FLAT WASHER	6	HW-000/5
38	5/16" X 3/32" X 1/4" X 31/32" X 1/8" X 5/16" FLAT WASHER	6	HW-000/6
39	5/16" X 3/32" X 1/4" X 31/32" X 1/8" X 5/16" FLAT WASHER	6	HW-000/5
40	5/16" X 3/32" X 1/4" X 31/32" X 1/8" X 5/16" FLAT WASHER	6	HW-000/6
41	5/16" X 3/32" X 1/4" X 31/32" X 1/8" X 5/16" FLAT WASHER	6	HW-000/5
42	5/16" X 3/32" X 1/4" X 31/32" X 1/8" X 5/16" FLAT WASHER	6	HW-000/6
43	5/16" X 3/32" X 1/4" X 31/32" X 1/8" X 5/16" FLAT WASHER	6	HW-000/5
44	5/16" X 3/32" X 1/4" X 31/32" X 1/8" X 5/16" FLAT WASHER	6	HW-000/6
45	5/16" X 3/32" X 1/4" X 31/32" X 1/8" X 5/16" FLAT WASHER	6	HW-000/5
46	5/16" X 3/32" X 1/4" X 31/32" X 1/8" X 5/16" FLAT WASHER	6	HW-000/6
47	5/16" X 3/32" X 1/4" X 31/32" X 1/8" X 5/16" FLAT WASHER	6	HW-000/5
48	5/16" X 3/32" X 1/4" X 31/32" X 1/8" X 5/16" FLAT WASHER	6	HW-000/6
49	5/16" X 3/32" X 1/4" X 31/32" X 1/8" X 5/16" FLAT WASHER	6	HW-000/5
50	5/16" X 3/32" X 1/4" X 31/32" X 1/8" X 5/16" FLAT WASHER	6	HW-000/6
51	5/16" X 3/32" X 1/4" X 31/32" X 1/8" X 5/16" FLAT WASHER	6	HW-000/5
52	5/16" X 3/32" X 1/4" X 31/32" X 1/8" X 5/16" FLAT WASHER	6	HW-000/6
53	5/16" X 3/32" X 1/4" X 31/32" X 1/8" X 5/16" FLAT WASHER	6	HW-000/5
54	5/16" X 3/32" X 1/4" X 31/32" X 1/8" X 5/16" FLAT WASHER	6	HW-000/6
55	5/16" X 3/32" X 1/4" X 31/32" X 1/8" X 5/16" FLAT WASHER	6	HW-000/5
56	5/16" X 3/32" X 1/4" X 31/32" X 1/8" X 5/16" FLAT WASHER	6	HW-000/6
57	5/16" X 3/32" X 1/4" X 31/32" X 1/8" X 5/16" FLAT WASHER	6	HW-000/5
58	5/16" X 3/32" X 1/4" X 31/32" X 1/8" X 5/16" FLAT WASHER	6	HW-000/6
59	5/16" X 3/32" X 1/4" X 31/32" X 1/8" X 5/16" FLAT WASHER	6	HW-000/5
60	5/16" X 3/32" X 1/4" X 31/32" X 1/8" X 5/16" FLAT WASHER	6	HW-000/6
61	5/16" X 3/32" X 1/4" X 31/32" X 1/8" X 5/16" FLAT WASHER	6	HW-000/5
62	5/16" X 3/32" X 1/4" X 31/32" X 1/8" X 5/16" FLAT WASHER	6	HW-000/6
63	5/16" X 3/32" X 1/4" X 31/32" X 1/8" X 5/16" FLAT WASHER	6	HW-000/5
64	5/16" X 3/32" X 1/4" X 31/32" X 1/8" X 5/16" FLAT WASHER	6	HW-000/6
65	5/16" X 3/32" X 1/4" X 31/32" X 1/8" X 5/16" FLAT WASHER	6	HW-000/5
66	5/16" X 3/32" X 1/4" X 31/32" X 1/8" X 5/16" FLAT WASHER	6	HW-000/6
67	5/16" X 3/32" X 1/4" X 31/32" X 1/8" X 5/16" FLAT WASHER	6	HW-000/5
68	5/16" X 3/32" X 1/4" X 31/32" X 1/8" X 5/16" FLAT WASHER	6	HW-000/6
69	5/16" X 3/32" X 1/4" X 31/32" X 1/8" X 5/16" FLAT WASHER	6	HW-000/5
70	5/16" X 3/32" X 1/4" X 31/32" X 1/8" X 5/16" FLAT WASHER	6	HW-000/6
71	5/16" X 3/32" X 1/4" X 31/32" X 1/8" X 5/16" FLAT WASHER	6	HW-000/5
72	5/16" X 3/32" X 1/4" X 31/32" X 1/8" X 5/16" FLAT WASHER	6	HW-000/6
73	5/16" X 3/32" X 1/4" X 31/32" X 1/8" X 5/16" FLAT WASHER	6	HW-000/5
74	5/16" X 3/32" X 1/4" X 31/32" X 1/8" X 5/16" FLAT WASHER	6	HW-000/6
75	5/16" X 3/32" X 1/4" X 31/32" X 1/8" X 5/16" FLAT WASHER	6	HW-000/5
76	5/16" X 3/32" X 1/4" X 31/32" X 1/8" X 5/16" FLAT WASHER	6	HW-000/6
77	5/16" X 3/32" X 1/4" X 31/32" X 1/8" X 5/16" FLAT WASHER	6	HW-000/5
78	5/16" X 3/32" X 1/4" X 31/32" X 1/8" X 5/16" FLAT WASHER	6	HW-000/6
79	5/16" X 3/32" X 1/4" X 31/32" X 1/8" X 5/16" FLAT WASHER	6	HW-000/5
80	5/16" X 3/32" X 1/4" X 31/32" X 1/8" X 5/16" FLAT WASHER	6	HW-000/6
81	5/16" X 3/32" X 1/4" X 31/32" X 1/8" X 5/16" FLAT WASHER	6	HW-000/5
82	5/16" X 3/32" X 1/4" X 31/32" X 1/8" X 5/16" FLAT WASHER	6	HW-000/6
83	5/16" X 3/32" X 1/4" X 31/32" X 1/8" X 5/16" FLAT WASHER	6	HW-000/5
84	5/16" X 3/32" X 1/4" X 31/32" X 1/8" X 5/16" FLAT WASHER	6	HW-000/6
85	5/16" X 3/32" X 1/4" X 31/32" X 1/8" X 5/16" FLAT WASHER	6	HW-000/5
86	5/16" X 3/32" X 1/4" X 31/32" X 1/8" X 5/16" FLAT WASHER	6	HW-000/6
87	5/16" X 3/32" X 1/4" X 31/32" X 1/8" X 5/16" FLAT WASHER	6	HW-000/5
88	5/16" X 3/32" X 1/4" X 31/32" X 1/8" X 5/16" FLAT WASHER	6	HW-000/6
89	5/16" X 3/32" X 1/4" X 31/32" X 1/8" X 5/16" FLAT WASHER	6	HW-000/5
90	5/16" X 3/32" X 1/4" X 31/32" X 1/8" X 5/16" FLAT WASHER	6	HW-000/6
91	5/16" X 3/32" X 1/4" X 31/32" X 1/8" X 5/16" FLAT WASHER	6	HW-000/5
92	5/16" X 3/32" X 1/4" X 31/32" X 1/8" X 5/16" FLAT WASHER	6	HW-000/6
93	5/16" X 3/32" X 1/4" X 31/32" X 1/8" X 5/16" FLAT WASHER	6	HW-000/5
94	5/16" X 3/32" X 1/4" X 31/32" X 1/8" X 5/16" FLAT WASHER	6	HW-000/6
95	5/16" X 3/32" X 1/4" X 31/32" X 1/8" X 5/16" FLAT WASHER	6	HW-000/5
96	5/16" X 3/32" X 1/4" X 31/32" X 1/8" X 5/16" FLAT WASHER	6	HW-000/6
97	5/16" X 3/32" X 1/4" X 31/32" X 1/8" X 5/16" FLAT WASHER	6	HW-000/5
98	5/16" X 3/32" X 1/4" X 31/32" X 1/8" X 5/16" FLAT WASHER	6	HW-000/6
99	5/16" X 3/32" X 1/4" X 31/32" X 1/8" X 5/16" FLAT WASHER	6	HW-000/5
100	5/16" X 3/32" X 1/4" X 31/32" X 1/8" X 5/16" FLAT WASHER	6	HW-000/6

POWER BATTERY SYSTEM LAYOUT FOR (1) C24 CABINET (48 V) WITH (20) 12 V BATTERIES

DATE: 06/20/08

POWER BATTERY SYSTEM LAYOUT FOR (1) C24 CABINET (48 V) WITH (20) 12 V BATTERIES

MODEL NO. G2S-481275