

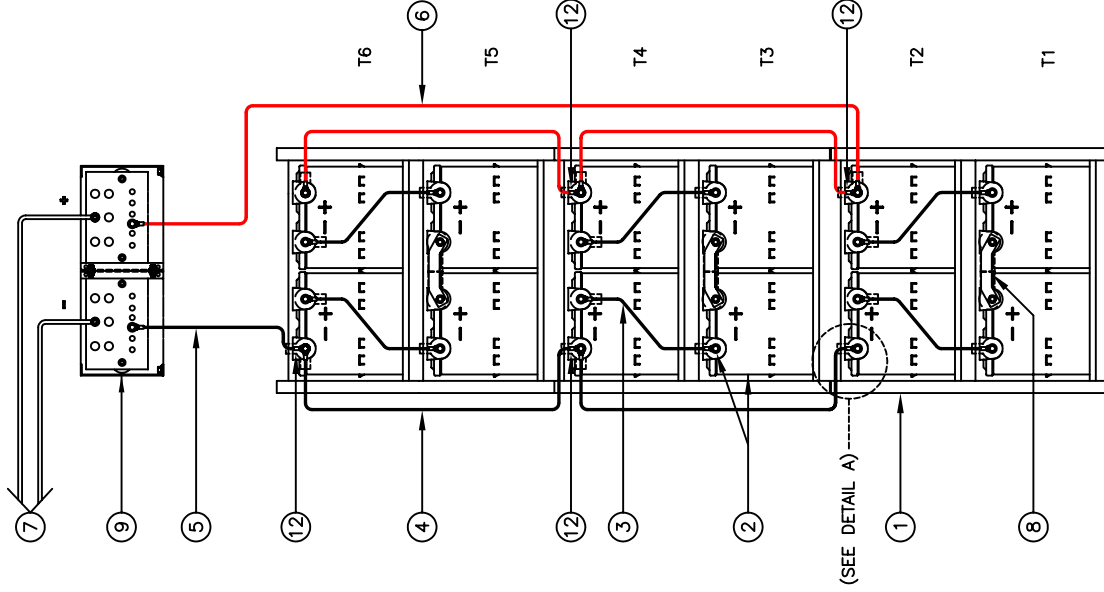
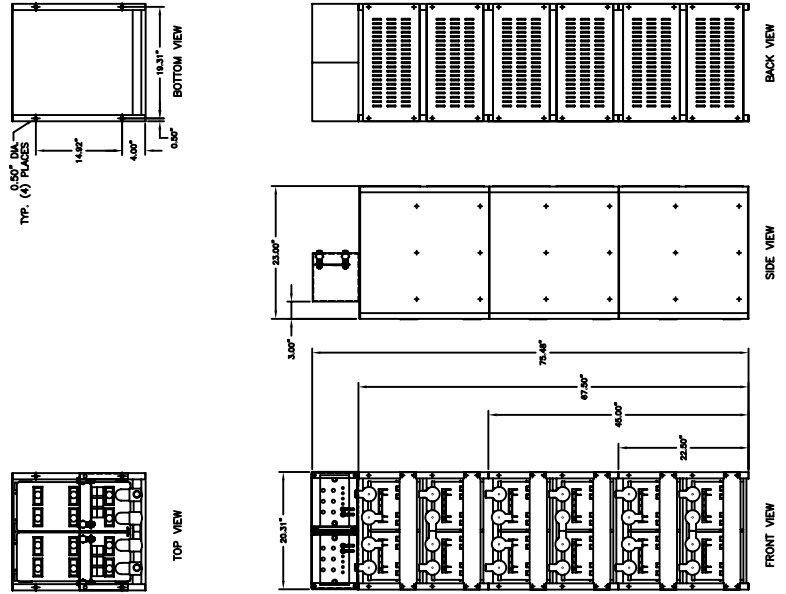
# SYSTEM SPECIFICATIONS

MODEL: EZS-48765  
 SYSTEM RATING: 75 AMPS FOR 8 HOURS TO 1.75 VPC.  
 RECOMMENDED SYSTEM FLOAT VOLTAGE: 54 MIN. 55.2 MAX.  
 SYSTEM CUTOFF VOLTAGE: 42  
 FULL LOAD CURRENT: 75 ADC  
 FULL LOAD CURRENT PER SERIES CIRCUIT: 25 ADC  
 OPEN CIRCUIT VOLTAGE: 49.6 - 51.6 VDC

NOTE: SYSTEM IS SIZED TO ACCOMMODATE A 250 AMP SPIKE

- ① ALL RECOMMENDED CUSTOMER'S CABLE GAUGES ARE BASED ON TABLE 310-16 OF N.E.C. USING 75°C CABLE IN 30°C AMBIENT.
- ② SEE BATTERY LABEL FOR TORQUE VALUES
- ③ USE INSULATED TOOLS FOR CABINET INSTALLATION. DO NOT ALLOW TOOLS OR CABLES TO REST ON BATTERIES.

PARALLEL CONNECTOR:  
 WIRE SIZE WILL BE SPECIFIED AS PER GAUGE (MINIMUM) TO BE USED. LENGTHS OF CABLE TO JUNCTION BOX SHOULD BE MADE SO THAT THE TOTAL LENGTH OF CABLES PER STRING IS EQUAL. THIS WILL MINIMIZE VARIATIONS OF RESISTANCE IN EACH STRING. HENCE EQUALLY DISTRIBUTE LOAD CURRENTS.

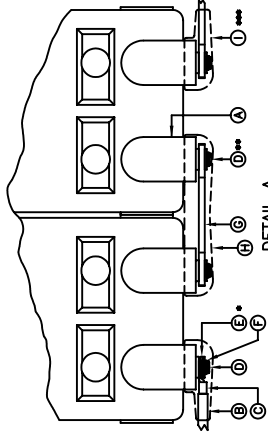


WIRING DIAGRAM

## IMPORTANT NOTE

THE CUSTOMER AND/OR CONTRACTOR SHALL BE RESPONSIBLE FOR INSTALLING THIS EQUIPMENT IN ACCORDANCE WITH ALL APPLICABLE CODES AND REGULATIONS

WHEN HANDLING, KEEP UPRIGHT WITHIN +/- 15 DEGREES.



DETAIL A

ITEM	DESCRIPTION
A	BATTERY TERMINAL
B	CABLE LUG
C	BOOT
D	WASHER
E	SPRING LOCK WASHER
F	BUS BAR
G	BUS BAR COVER
H	TERMINAL CONNECTION

- \* USE (2) FLAT WASHER WHEN CABLES ARE BEING USED
- \*\* USE (1) FLAT WASHER WHEN A BUS BAR IS BEING USED
- \*\*\* BUS BAR BOLTS SHALL BE USED IN EACH CONNECTION SEE BATTERY LABEL FOR TORQUE VALUES

## NOTE:

\* ALTERNATE METHOD MAY BE USED TO CONNECT TWO SYSTEMS ACCORDING TO CUSTOMERS SPECIFICATIONS.

## IMPORTANT NOTE

ALL CONNECTIONS TO BE RETORQUED ANNUALLY.  
 ALL CONNECTIONS MUST BE CHECKED FOR PROPER TORQUE PRIOR TO START UP OR ENERGIZING OF SYSTEM.

NOTE:  
 CABLES SIZED TO RESTRICT A VOLTAGE DROP OVER 2%

NO.	DESCRIPTION	QTY.	PART NO.
12	TERMINAL BOOTS (956D9V14)	4	AC-0011
11	EZ STACKING HARDWARE KIT	3	HK-0003
10	EZ ASSEMBLY HARDWARE KIT	6	HK-0001
9	EZ BUSBAR ASSEMBLY	1	EZ-9017
8	BUS BAR (THICK)	3	CC-0058
7	BUS BAR (250 MCM MINIMUM)	2	SUPPLIED BY CUSTOMER
6	CABLE 3/0 GA. 60" LG.	1	3/0-60BE
5	CABLE 3/0 GA. 12" LG.	1	3/0-12BE
4	CABLE 3/0 GA. 24" LG.	4	3/0-24B
3	CABLE 3/0 GA. 15" LG.	6	3/0-15B
2	BATTERY/BOOTS/HARDWARE	12	PSG-12255
1	RACK	3	EZS1

NO.	DESCRIPTION	QTY.	PART NO.
SERIAL #5033	DATE		
REVISIONS	10/22/08		
NO.	DATE	BY	SCALE
1			NONE
2			POWER BY
3			Kimberly
4			NOT VALID UNLESS APPROVED
5			



BATTERY SYSTEM LAYOUT FOR (3) E71 RACKS (48 V.) WITH (12) PSG-12255 BATTERIES

POWER NO.: EZS-48765