

SYSTEM SPECIFICATIONS

SYSTEM MODEL NO.: EZS-48600
 SYSTEM RATING: 60 AMPS FOR 8 HOURS TO 1.75 VPC.
 RECOMMENDED SYSTEM FLOAT VOLTAGE: 54 MIN. 55.2 MAX.
 SYSTEM CUTOFF VOLTAGE: 42
 FULL LOAD CURRENT: 60 ADC
 FULL LOAD CURRENT PER SERIES CIRCUIT: 12 ADC
 OPEN CIRCUIT VOLTAGE: 49.6-51.6 VDC

NOTE: SYSTEM IS SIZED TO ACCOMMODATE A 250 AMP SPIKE

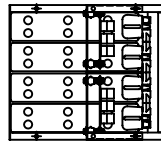
- ① ALL RECOMMENDED CUSTOMER'S CABLE GAUGES ARE BASED ON TABLE 310-16 OF N.E.C. USING 75°C CABLE IN 30°C AMBIENT.
- ② USE INSULATED TOOLS FOR CABINET INSTALLATION. DO NOT ALLOW TOOLS OR CABLES TO REST ON BATTERIES.

IMPORTANT NOTE

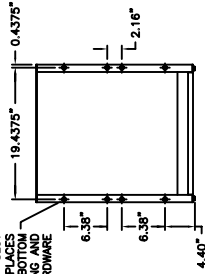
THE CUSTOMER AND/OR CONTRACTOR SHALL BE RESPONSIBLE FOR INSTALLING THIS EQUIPMENT IN ACCORDANCE WITH ALL APPLICABLE CODES AND REGULATIONS

PLEASE REFER TO NEC 2002 SECTION 480-9 FOR THE REQUIREMENTS ON WORKING SPACES.

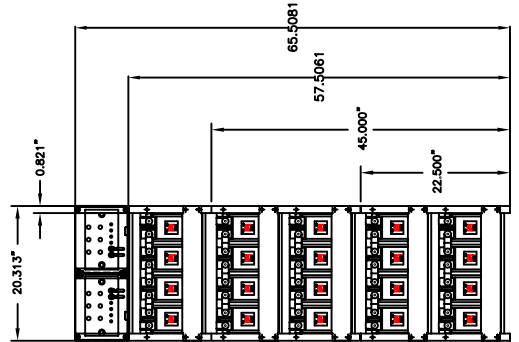
40.5625" X 0.6875" SLOT
 TYP. (8) PLACES
 BOTH TOP AND BOTTOM
 USED FOR ANCHORING AND
 STACKING HARDWARE



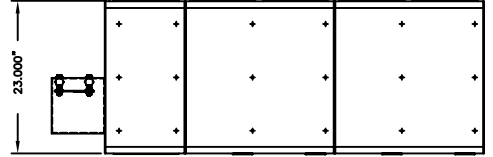
TOP VIEW



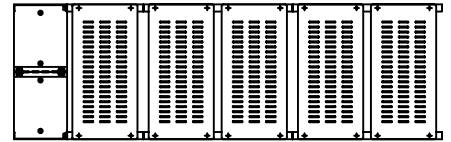
BOTTOM VIEW



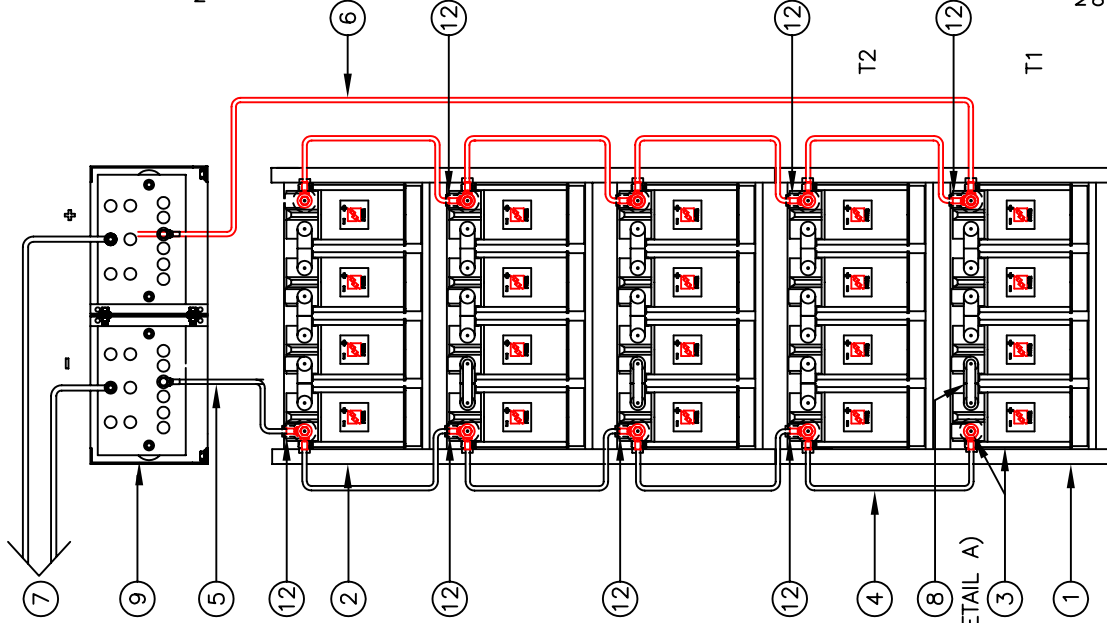
FRONT VIEW



SIDE VIEW



BACK VIEW

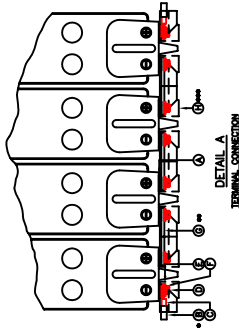


WIRING DIAGRAM

IMPORTANT NOTE
 ALL CONNECTIONS TO BE RETORQUED ANNUALLY.
 ALL CONNECTIONS MUST BE CHECKED FOR PROPER TORQUE
 PRIOR TO START UP OR ENERGIZING OF SYSTEM.

PARALLEL CONNECTOR:
 WIRE SIZE WILL BE SPECIFIED AS PER GAUGE (MINIMUM) TO BE USED. LENGTHS OF CABLE TO JUNCTION BOX SHOULD BE MADE SO THAT THE TOTAL LENGTH OF CABLES PER STRING IS EQUAL. THIS WILL MINIMIZE VARIATIONS OF RESISTANCE IN EACH STRING. HENCE EQUALLY DISTRIBUTE LOAD CURRENTS.

NOTE:
 * ALTERNATE METHOD MAY BE USED TO CONNECT TWO SYSTEMS ACCORDING TO CUSTOMERS SPECIFICATIONS.



DETAIL A
 TERMINAL CONNECTION

NO.	DESCRIPTION	QTY.
1	8000	
2	8000	
3	8000	
4	8000	
5	8000	
6	8000	
7	8000	
8	8000	
9	8000	
10	8000	
11	8000	
12	8000	

* USE (2) FLAT WASHER WHEN CABLES ARE BEING USED
 **USE (1) FLAT WASHER WHEN A BUS BAR IS BEING USED
 ***USE (1) FLAT WASHER WHEN A BUS BAR IS BEING USED
 ****USE (1) FLAT WASHER WHEN A BUS BAR IS BEING USED
 *****USE (1) FLAT WASHER WHEN A BUS BAR IS BEING USED
 *****ANNUALLY TO 115 IN-LES.

NOTE: CABLES SIZED TO RESTRICT A VOLTAGE DROP OVER 2%

NO.	DESCRIPTION	QTY.
1	RACK	1
2	EZS2	2
3	BATTERY/BOOTS/HARDWARE	20
4	CABLE DOUBLE RUN 1/0 GA. 12" LG BX2	1/0-12B
5	CABLE DOUBLE RUN 1/0 GA. 12" LG BX2	1/0-12BE
6	CABLE DOUBLE RUN 1/0 GA. 50" LG 1X2	1/0-50BE
7	CABLE DOUBLE RUN 1/0 GA. 50" LG 2	SUPPLIED BY CUSTOMER
8	BUSBAR (THICK)	15
9	EZ ASSEMBLY KIT	5
10	EZ ASSEMBLY HARDWARE KIT	5
11	EZ STACKING HARDWARE KIT	3
12	TERMINAL BOOTS (956DSV14)	8
13	AC-0011	
14	HK-0003	
15	HK-0001	
16	EZ-9017	
17	CC-0063	

NO.	REVISIONS	DATE	BY	SCALE	DESCRIPTION	PART NO.
1		02/26/09		NONE		
2						
3						
4						
5						

POWER
 POWER BATTERY COMPANY INC.
 BATTERY SYSTEM LAYOUT FOR
 (3) EZ RACK (48 V) WITH
 (20) 12 VOLT BATTERIES
 DRAWING NO. EZS-48600