

SYSTEM SPECIFICATIONS

SYSTEM MODEL NO.: EZS-48360
 SYSTEM RATING: 36 AMPS FOR 8 HOURS TO 1.75 VPC.
 RECOMMENDED SYSTEM FLOAT VOLTAGE: 54 MIN. 55.2 MAX.
 SYSTEM CUTOFF VOLTAGE: 42
 FULL LOAD CURRENT: 36 ADC
 FULL LOAD CURRENT PER SERIES CIRCUIT: 12 ADC
 OPEN CIRCUIT VOLTAGE: 49.6-51.6 VDC

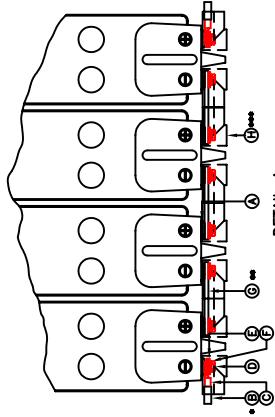
NOTE: SYSTEM IS SIZED TO ACCOMMODATE A 250 AMP SPIKE

- 1) ALL RECOMMENDED CUSTOMER'S CABLE GAUGES ARE BASED ON TABLE 310-16 OF N.E.C. USING 75°C CABLE IN 30°C AMBIENT.
- 2) USE INSULATED TOOLS FOR CABINET INSTALLATION. DO NOT ALLOW TOOLS OR CABLES TO REST ON BATTERIES.

IMPORTANT NOTE

THE CUSTOMER AND/OR CONTRACTOR SHALL BE RESPONSIBLE FOR INSTALLING THIS EQUIPMENT IN ACCORDANCE WITH ALL APPLICABLE CODES AND REGULATIONS

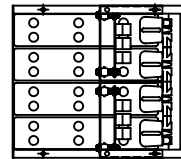
PLEASE REFER TO NEC 2002 SECTION 480-9 FOR THE REQUIREMENTS ON WORKING SPACES.



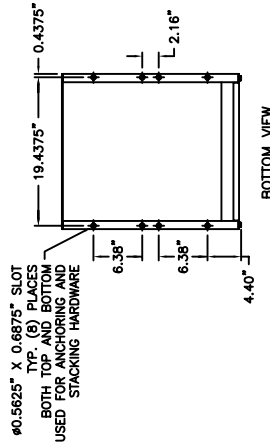
DETAIL A
TERMINAL CONNECTION

ITEM	DESCRIPTION
H	BUS BAR COVER
F	SPRING LOCK WASHER
E	WASHER
D	BOLT
C	CABLE LUG
B	CABLE LUG
A	BATTERY TERMINAL

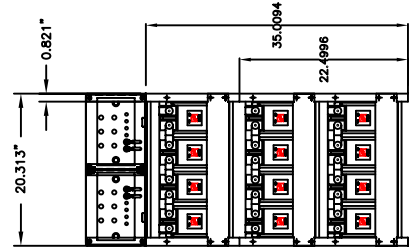
* USE (2) FLAT WASHER WHEN CABLES ARE BEING USED
 **USE (1) FLAT WASHER WHEN A BUS BAR IS BEING USED
 *** BUS BAR BOLTS SHALL BE USE IN EACH CONNECTION
 NOTE: ALL CONNECTIONS MUST BE RETROGUED ANNUALLY TO 115 IN.-LBS.



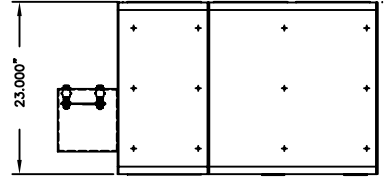
TOP VIEW



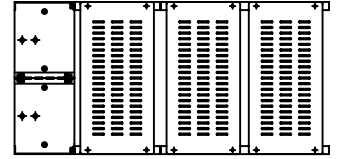
BOTTOM VIEW



FRONT VIEW

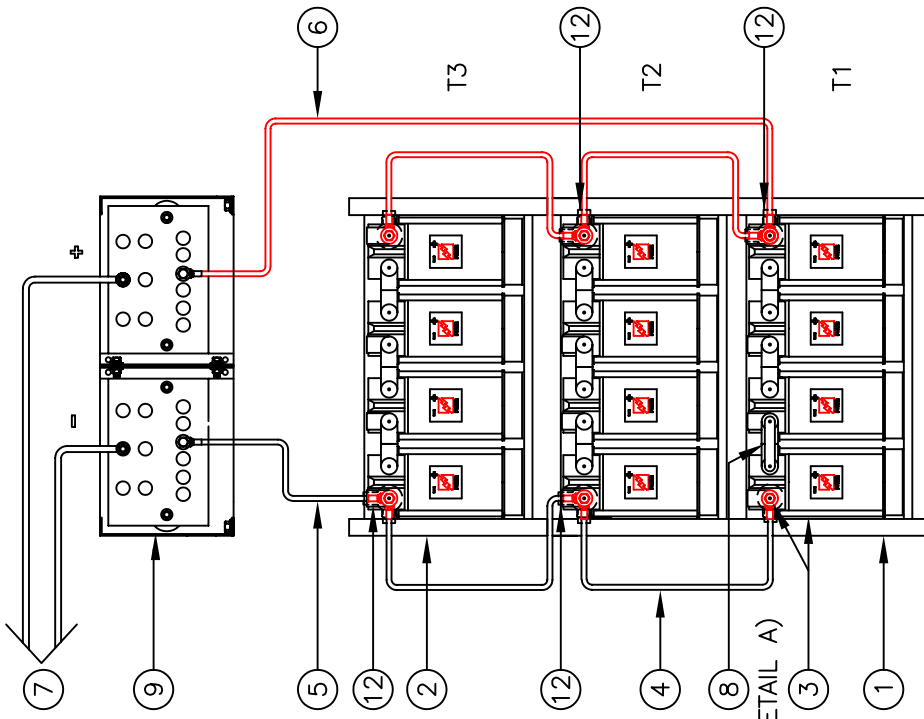


SIDE VIEW



BACK VIEW

WIRING DIAGRAM



NOTE: CABLES SIZED TO RESTRICT A VOLTAGE DROP OVER 2%

NO.	DESCRIPTION	QTY.	PART NO.
12	TERMINAL BOOTS (956D9V14)	4	AC-0011
11	EZ STACKING HARDWARE KIT	2	HK-0003
10	EZ ASSEMBLY HARDWARE KIT	3	HK-0001
9	EZ BUSBAR ASSEMBLY	1	EZ-9017
8	BUSBAR (THICK)	2	CC-0063
7	CABLE 250 MCM MINIMUM SUPPLIED BY CUSTOMER	9	
6	CABLE 3/0 GA. 35' LG.	1	3/0-35BE
5	CABLE 3/0 GA. 12' LG.	1	3/0-12BE
4	CABLE 3/0 GA. 12' LG.	4	3/0-12B
3	BATTERY/BOOTS/HARDWARE	12	PSG-12120F
2	RACK	1	EZS2
1	RACK	1	EZS1

PARALLEL CONNECTOR:
 WIRE SIZE WILL BE SPECIFIED AS PER GAUGE (MINIMUM) TO BE USED. LENGTHS OF CABLE TO JUNCTION BOX SHOULD BE MADE SO THAT THE TOTAL LENGTH OF CABLES PER STRING IS EQUAL. THIS WILL MINIMIZE VARIATIONS OF RESISTANCE IN EACH STRING. HENCE EQUALLY DISTRIBUTE LOAD CURRENTS.

NOTE:
 * ALTERNATE METHOD MAY BE USED TO CONNECT TWO SYSTEMS ACCORDING TO CUSTOMERS SPECIFICATIONS.

IMPORTANT NOTE

ALL CONNECTIONS TO BE RETROGUED ANNUALLY.
 ALL CONNECTIONS MUST BE CHECKED FOR PROPER TORQUE PRIOR TO START UP OR ENERGIZING OF SYSTEM.

POWER
 BATTERY COMPANY INC.
 BATTERY SYSTEM LAYOUT FOR
 (3) EZ RACKS (48 V.) WITH
 (12) 12 VOLT BATTERIES

NO.	DATE	BY	SCALE	REVISIONS
1		Kimberly	NONE	02/26/09
2				
3				
4				
5				

DRAWN BY: Kimberly
 NOT VALID UNLESS APPROVED:
 DATE: 02/26/09
 SERIAL #
 REVISIONS

DRIVING NO.: EZS-48360