

SYSTEM SPECIFICATIONS

MODEL: EZS-481530
 SYSTEM RATING: 150 AMPS FOR 8 HOURS TO 1.75 VPC.
 RECOMMENDED SYSTEM FLOAT VOLTAGE: 54 MIN. 55.2 MAX.
 SYSTEM CUTOFF VOLTAGE: 42
 FULL LOAD CURRENT: 150 ADC
 FULL LOAD CURRENT PER SERIES CIRCUIT: 25 ADC
 OPEN CIRCUIT VOLTAGE: 49.6 - 51.6 VDC

NOTE: SYSTEM IS SIZED TO ACCOMMODATE A 250 AMP SPIKE

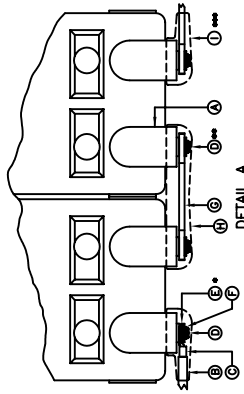
- ① ALL RECOMMENDED CUSTOMER'S CABLE GAUGES ARE BASED ON TABLE 310-16 OF N.E.C. USING 75°C CABLE IN 30°C AMBIENT.
- ② SEE BATTERY LABEL FOR TORQUE VALUES
- ③ USE INSULATED TOOLS FOR CABINET INSTALLATION. DO NOT ALLOW TOOLS OR CABLES TO REST ON BATTERIES.

IMPORTANT NOTE

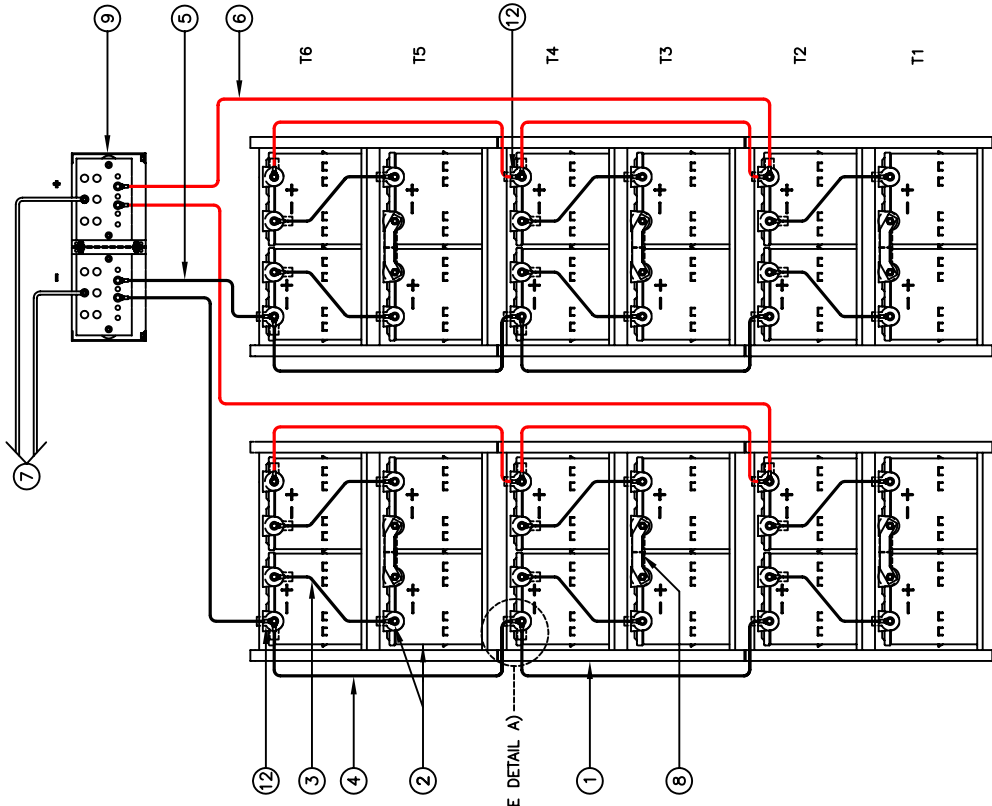
THE CUSTOMER AND/OR CONTRACTOR SHALL BE RESPONSIBLE FOR INSTALLING THIS EQUIPMENT IN ACCORDANCE WITH ALL APPLICABLE CODES AND REGULATIONS
 WHEN HANDLING, KEEP UPRIGHT WITHIN +/- 15 DEGREES.

IMPORTANT NOTE

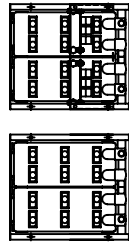
ALL CONNECTIONS TO BE RETORQUED ANNUALLY
 ALL CONNECTIONS MUST BE CHECKED FOR PROPER TORQUE PRIOR TO START UP OR ENERGIZING OF SYSTEM.



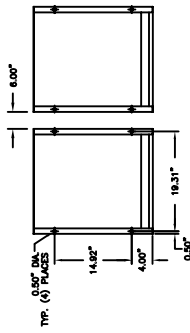
- * USE (2) FLAT WASHER WHEN CABLES ARE BEING USED
 - ** USE (1) FLAT WASHER WHEN A BUS BAR IS BEING USED
 - *** BUS BAR BOLTS SHALL BE USE IN EACH CONNECTION
- SEE BATTERY LABEL FOR TORQUE VALUES



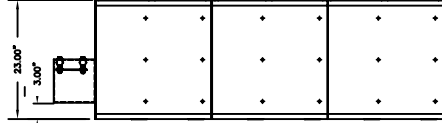
WIRING DIAGRAM



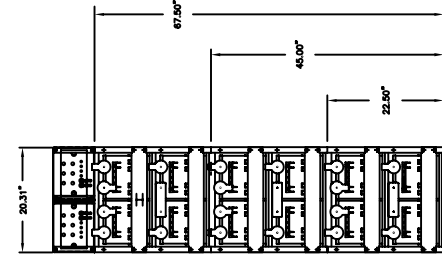
TOP VIEW



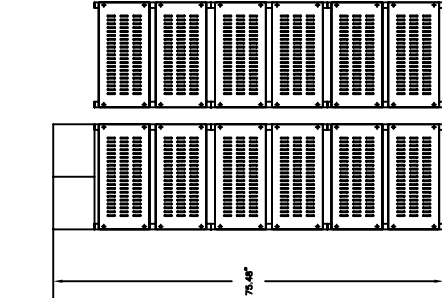
BOTTOM VIEW



SIDE VIEW



FRONT VIEW



BACK VIEW

NOTE: CABLES SIZED TO RESTRICT A VOLTAGE DROP OVER 2%

NO.	DESCRIPTION	QTY.	PART NO.
12	TERMINAL BOOTS (956DSV14)	8	AC-0011
11	EZ STACKING HARDWARE KIT	5	HK-0003
10	EZ ASSEMBLY HARDWARE KIT	12	HK-0001
9	EZ BUSBAR ASSEMBLY	1	EZ-9017
8	BUS BAR (THICK)	6	CC-0058
7	CABLE DOUBLE RUN 2/0 GA. MINIMUM 2X2 SUPPLIED BY CUSTOMER		
6	CABLE DOUBLE RUN 2/0 GA. 75' LG. 2X2	2/0-75BE	
5	CABLE DOUBLE RUN 2/0 GA. 40' LG. 2X2	2/0-40BE	
4	CABLE DOUBLE RUN 2/0 GA. 24' LG. 8X2	2/0-24B	
3	CABLE DOUBLE RUN 2/0 GA. 15' LG. 12X2	2/0-15B	
2	BATTERY/BOOTS/HARDWARE	24	PSG-12255
1	RACK	6	EZS1

NOTE:
 * ALTERNATE METHOD MAY BE USED TO CONNECT TWO SYSTEMS ACCORDING TO CUSTOMERS SPECIFICATIONS.

PARALLEL CONNECTOR:
 WIRE SIZE WILL BE SPECIFIED AS PER GAUGE (MINIMUM) TO BE USED. LENGTHS OF CABLE TO JUNCTION BOX SHOULD BE MADE SO THAT THE TOTAL LENGTH OF CABLES PER STRING IS EQUAL. THIS WILL MINIMIZE VARIATIONS OF RESISTANCE IN EACH STRING. HENCE EQUALLY DISTRIBUTE LOAD CURRENTS.



EZS-481530