

SYSTEM SPECIFICATIONS

MODEL: EZS-481275
 SYSTEM RATING: 125 AMPS FOR 8 HOURS TO 1.75 VPC.
 RECOMMENDED SYSTEM FLOAT VOLTAGE: 54 MIN. 55.2 MAX.
 SYSTEM CUTOFF VOLTAGE: 42
 FULL LOAD CURRENT: 125 ADC
 FULL LOAD CURRENT PER SERIES CIRCUIT: 25 ADC
 OPEN CIRCUIT VOLTAGE: 49.6 - 51.6 VDC

NOTE: SYSTEM IS SIZED TO ACCOMMODATE A 250 AMP SPIKE

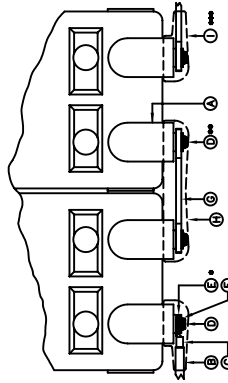
- 1 ALL RECOMMENDED CUSTOMER'S CABLE GAUGES ARE BASED ON TABLE 310-16 OF N.E.C. USING 75°C CABLE IN 30°C AMBIENT.
- 2 SEE BATTERY LABEL FOR TORQUE VALUES
- 3 USE INSULATED TOOLS FOR CABINET INSTALLATION. DO NOT ALLOW TOOLS OR CABLES TO REST ON BATTERIES.

IMPORTANT NOTE

THE CUSTOMER AND/OR CONTRACTOR SHALL BE RESPONSIBLE FOR INSTALLING THIS EQUIPMENT IN ACCORDANCE WITH ALL APPLICABLE CODES AND REGULATIONS
 WHEN HANDLING, KEEP UPRIGHT WITHIN +/- 15 DEGREES.

IMPORTANT NOTE

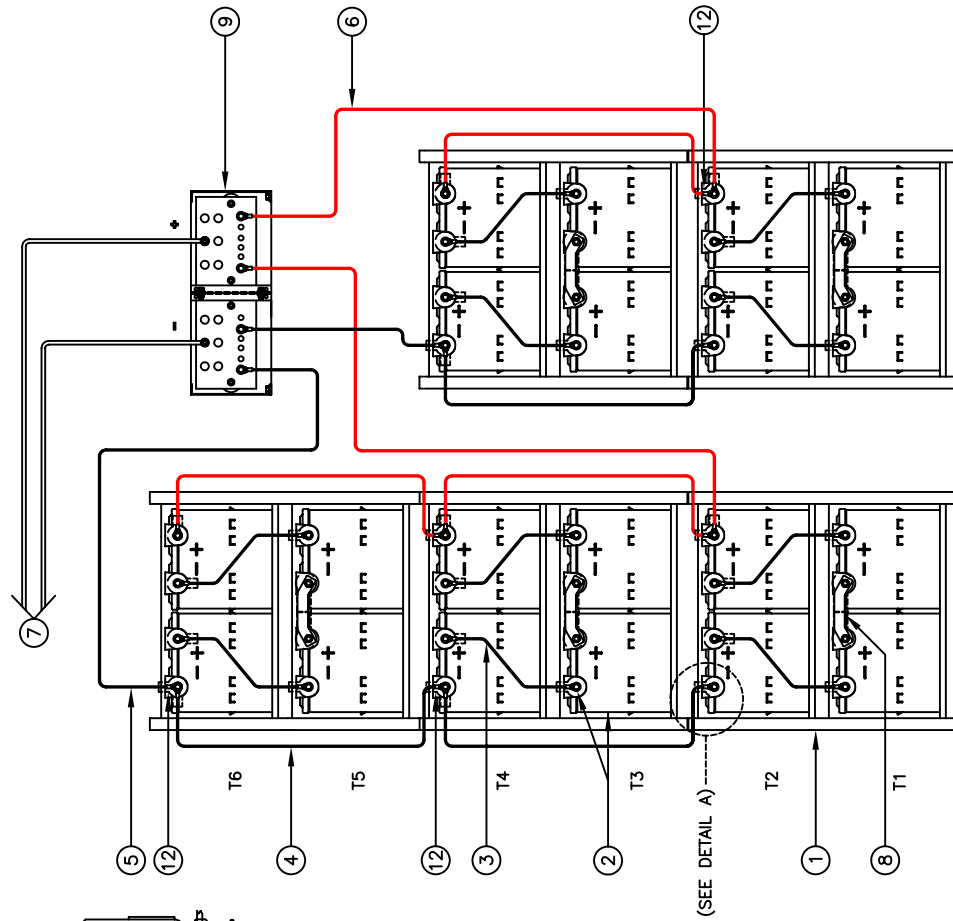
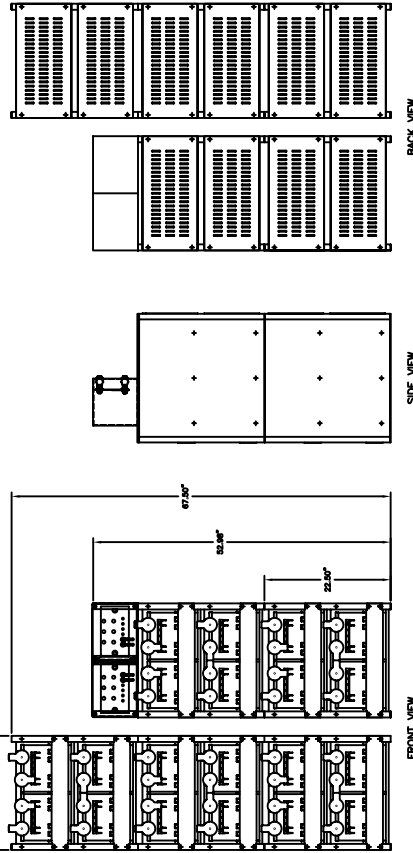
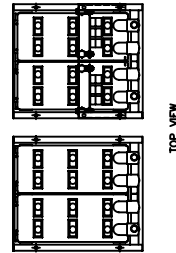
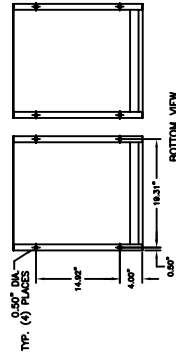
ALL CONNECTIONS TO BE RETORQUED ANNUALLY.
 ALL CONNECTIONS MUST BE CHECKED FOR PROPER TORQUE PRIOR TO START UP OR ENERGIZING OF SYSTEM.



DETAIL A

ITEM	DESCRIPTION
1	TERMINAL COVER
2	BUS BAR COVER
3	BUS BAR
4	SPRING WASHER
5	BOLT
6	CABLE LUG
7	BATTERY TERMINAL

- * USE (2) FLAT WASHER WHEN CABLES ARE BEING USED
- ** USE (1) FLAT WASHER WHEN A BUS BAR IS BEING USED
- *** BUS BAR BOLTS SHALL BE USE IN EACH CONNECTION SEE BATTERY LABEL FOR TORQUE VALUES



WIRING DIAGRAM

NOTE: CABLES SIZED TO RESTRICT A VOLTAGE DROP OVER 2%

NO.	DESCRIPTION	QTY.	PART NO.
1	RACK	5	EZS1
2	BATTERY/BOOTS/HARDWARE	20	P5G-12255
3	CABLE DOUBLE RUN 1/0 GA. 15'	10x2	1/0-15B
4	CABLE DOUBLE RUN 1/0 GA. 24'	10x2	1/0-24B
5	CABLE DOUBLE RUN 1/0 GA. 60'	10x2	1/0-60BE
6	CABLE DOUBLE RUN 1/0 GA. 45'	10x2	1/0-45BE
7	CABLE DOUBLE RUN 1/0 GA. MINIMUM 2x2 SHIPPED BY CUSTOMER	2x2	1/0-45BE
8	BUS BAR (THICK)	5	CC-0058
9	EZ BUSBAR ASSEMBLY	1	EZ-9017
10	EZ ASSEMBLY HARDWARE KIT	10	HK-0001
11	EZ STACKING HARDWARE KIT	4	HK-0003
12	TERMINAL BOOTS (85609/14)	6	AC-0011

NOTE:
 *ALTERNATE METHOD MAY BE USED TO CONNECT TWO SYSTEMS ACCORDING TO CUSTOMERS SPECIFICATIONS.

PARALLEL CONNECTOR:
 WIRE SIZE WILL BE SPECIFIED AS PER GAUGE (MINIMUM) TO BE USED. LENGTHS OF CABLE TO JUNCTION BOX SHOULD BE MADE SO THAT THE TOTAL LENGTH OF CABLES PER STRING IS EQUAL. THIS WILL MINIMIZE VARIATIONS OF RESISTANCE IN EACH STRING. HENCE EQUALLY DISTRIBUTE LOAD CURRENTS.



EZS-481275