

SYSTEM SPECIFICATIONS

MODEL: EZS-481020
 SYSTEM RATING: 100 AMPS FOR 8 HOURS TO 1.75 VPC.
 RECOMMENDED SYSTEM FLOAT VOLTAGE: 54 MIN. 55.2 MAX.
 SYSTEM CUTOFF VOLTAGE: 42
 FULL LOAD CURRENT: 100 ADC
 FULL LOAD CURRENT PER SERIES CIRCUIT: 25 ADC
 OPEN CIRCUIT VOLTAGE: 49.6 - 51.6 VDC

NOTE: SYSTEM IS SIZED TO ACCOMMODATE A 250 AMP SPIKE

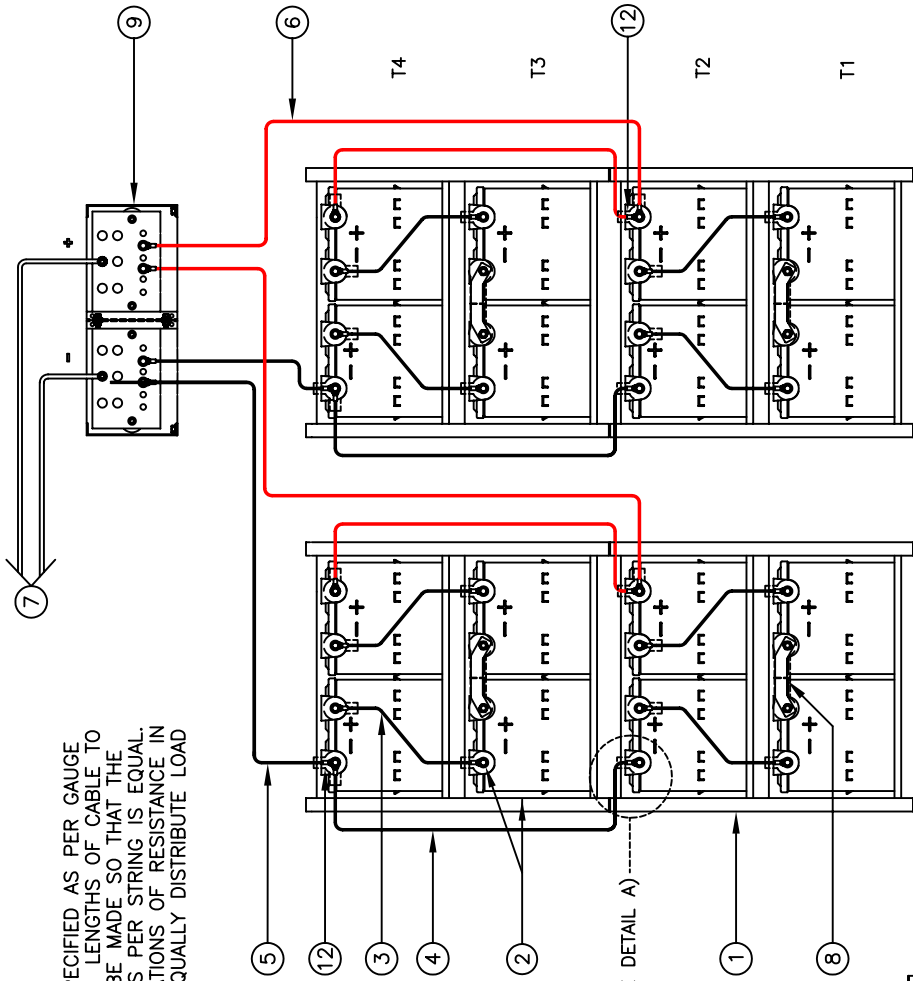
- ① ALL RECOMMENDED CUSTOMER'S CABLE GAUGES ARE BASED ON TABLE 310-16 OF N.E.C. USING 75°C CABLE IN 30°C AMBIENT.
- ② SEE BATTERY LABEL FOR TORQUE VALUES
- ③ USE INSULATED TOOLS FOR CABINET INSTALLATION. DO NOT ALLOW TOOLS OR CABLES TO REST ON BATTERIES.

IMPORTANT NOTE
 ALL CONNECTIONS TO BE RETORQUED ANNUALLY.
 ALL CONNECTIONS MUST BE CHECKED FOR PROPER TORQUE PRIOR TO START UP OR ENERGIZING OF SYSTEM.

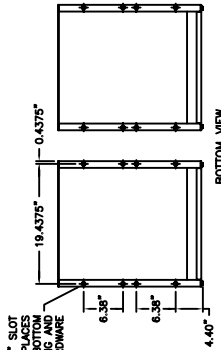
IMPORTANT NOTE
 THE CUSTOMER AND/OR CONTRACTOR SHALL BE RESPONSIBLE FOR INSTALLING THIS EQUIPMENT IN ACCORDANCE WITH ALL APPLICABLE CODES AND REGULATIONS
 WHEN HANDLING, KEEP UPRIGHT WITHIN +/- 15 DEGREES.

PARALLEL CONNECTOR:
 WIRE SIZE WILL BE SPECIFIED AS PER GAUGE (MINIMUM) TO BE USED. LENGTHS OF CABLE TO JUNCTION BOX SHOULD BE MADE SO THAT THE TOTAL LENGTH OF CABLES PER STRING IS EQUAL. THIS WILL MINIMIZE VARIATIONS OF RESISTANCE IN EACH STRING. HENCE EQUALLY DISTRIBUTE LOAD CURRENTS.

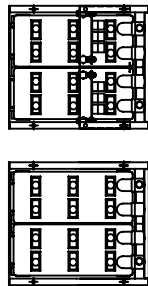
NOTE:
 * ALTERNATE METHOD MAY BE USED TO CONNECT TWO SYSTEMS ACCORDING TO CUSTOMERS SPECIFICATIONS.



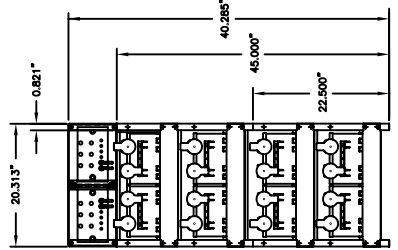
WIRING DIAGRAM



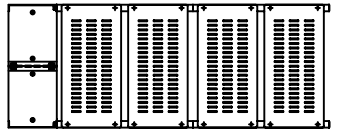
0.5625" X 0.6875" SLOT
 TOP, (6) PLACES
 BOTH TOP AND BOTTOM
 USED FOR ANCHORING AND
 STANCHIONING PURPOSE



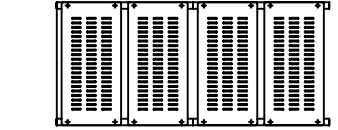
TOP VIEW



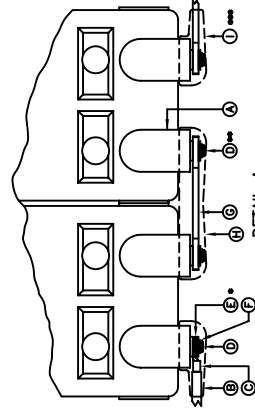
FRONT VIEW



SIDE VIEW



BACK VIEW



DETAIL A

TERMINAL CONNECTION	TERMINAL COVER	BUS BAR COVER	BUS BAR WASHER	SPRING WASHER	BOLT	CABLE LUG	CABLE	BATTERY MANUAL DESCRIPTION
H								
G								
E								
D								
B								
ITAL								

USE (2) FLAT WASHER WHEN CABLES ARE BEING USED
 USE (1) FLAT WASHER WHEN A BUS BAR IS BEING USED
 BUS BAR BOLTS SHALL BE USE IN EACH CONNECTION
 SEE BATTERY LABEL FOR TORQUE VALUES

NOTE:
 CABLES SIZED TO RESTRICT A VOLTAGE DROP OVER 2%

NO.	DESCRIPTION	QTY.	PART NO.
1	RAKCY/BOOTS/HARDWARE	16	PSC-12255
2	CABLE	4	EZS1
3	CABLE	4	PSC-12255
4	CABLE	4	PSC-12255
5	CABLE	4	PSC-12255
6	CABLE	4	PSC-12255
7	CABLE	4	PSC-12255
8	CABLE	4	PSC-12255
9	CABLE	4	PSC-12255
10	CABLE	4	PSC-12255
11	CABLE	4	PSC-12255
12	CABLE	4	PSC-12255

NO.	REVISIONS	DATE	BY	SCALE	NONE
1		10/31/08			
2					
3					
4					
5					

POWER
 POWER BATTERY COMPANY INC.
 BATTERY SYSTEM LAYOUT FOR
 (4) EZ1 RACKS (48 V.) WITH
 (16) PSC-12255 BATTERIES
 DRAWING NO. EZS-481020